

File

Network

View

Properties

Open

Connect with Remote Desktop Connection

Add devices and printers

View printers

View device webpage

Network and Sharing Center

Location

Network

←

→

⌵

⬆

🖨

> Network

⌵

🔄

★ Quick access

📁 Autodesk Docs

📁 David Barthol - 6274

📁 Dropbox

📁 OneDrive - BDA Development Services PLLC

📁 OneDrive - Personal

💻 This PC

📁 3D Objects

📁 Desktop

📁 Documents

📁 Downloads

📁 Music

📁 Pictures

📁 Videos

📁 Local Disk (C:)

📁 Local Disk (D:)

🖨 Network

⌵ Multifunction Devices (1)

🖨

Brother MFC-J480DW
[68140181e61e]

⌵ Network Infrastructure (1)

📶

DOCSIS

⌵ Other Devices (1)

🖨

712743

⌵ Printers (1)

🖨

Brother MFC-J480DW
[68140181e61e]

⌵ Scanners (1)

🖨

Brother MFC-J480DW
[68140181e61e]

OPEN PORT 445 RULE

Windows Defender Firewall with Advanced Security

File Action View Help

Inbound Rules

Outbound Rules

Connection Security Rules

Monitoring

open port 445 Properties

General

Name: open port 445

Description:

Enabled

Action

Allow the connection

Allow the connection if it is secure

Block the connection

OK Cancel Apply

Name	Group	Local Address	Remote Address	Local Port	Remote Port	Protocol	Action
Bonjour Service		Any	Any				
Bonjour Service		Any	Any				
Bonjour Service		Any	Any				
Bonjour Service		Any	Any				
Bonjour Service		Any	Any				
Bonjour Service		Any	Any				
BREngineProcess		Any	Any				
BREngineProcess		Any	Any				
Brother		Any	Any				
BrotherNetwork Scanner		Any	Any				
CCleaner Update		Any	Any				
CCleaner Update		Any	Any				
CCleaner Update		Any	Any				
CCleaner Update		Any	Any				
CefSharp.BrowserSubprocess		Any	Any				
CefSharp.BrowserSubprocess		Any	Any				
Dropbox		Any	Any				
Dropbox		Any	Any				
Firefox (C:\Program Files\Mozilla Firefox)		Any	Any				
Firefox (C:\Program Files\Mozilla Firefox)		Any	Any				
Java(TM) Platform SE binary		Any	Any				
Java(TM) Platform SE binary		Any	Any				
magicjack.exe		Any	Any				
magicjack.exe		Any	Any				
Microsoft Lync		Any	Any				
Microsoft Lync		Any	Any				
Microsoft Lync UcMapi		Any	Any				
Microsoft Lync UcMapi		Any	Any				
Microsoft Office Outlook		Any	Any				
open port 445		All	Yes	Allow	No	Any	
SHIELD Streaming NSS TCP Exception		All	Yes	Allow	No	C:\Progr...	
SHIELD Streaming NvStreamer TCP Excep...		All	Yes	Allow	No	C:\Progr...	

Actions

Inbound Rules

New Rule...

Filter by Profile

Filter by State

Filter by Group

View

Refresh

Export List...

Help

open port 445

Disable Rule

Cut

Copy

Delete

Properties

Help

Learn Azure with free online training from Microsoft

See also
Security and Maintenance
Network and Sharing Center

open port 445 Properties

General | Scope | Advanced | Local Principals | Remote Users

Programs

☒ All programs that meet the specified conditions

☐ This program:

Application Packages

Specify the application packages to which this rule applies.

Services

Specify the services to which this rule applies.

Comppartments

☒ All compartments that meet the specified conditions

☐ This compartment:

OK Cancel Apply

open port 445 Properties

General | Scope | Advanced | Local Principals | Remote Users

Authorized computers

☐ Only allow connections from these computers:

Exceptions

☐ Skip this rule for connections from these computers:

OK Cancel Apply

open port 445 Properties

General | Programs and Services | Remote Computers

Protocols and ports

Protocol type: TCP

Protocol number: 6

Local port: Specific Ports

445

Example: 80, 443, 5000-5010

Remote port: Specific Ports

445

Example: 80, 443, 5000-5010

Internet Control Message Protocol (ICMP) settings: Customize...

OK Cancel Apply

open port 445 Properties

General | Programs and Services | Remote Computers

Local IP address

☒ Any IP address

☐ These IP addresses:

Remote IP address

☒ Any IP address

☐ These IP addresses:

OK Cancel Apply

open port 445 Properties

General | Programs and Services | Remote Computers

Profiles

Specify profiles to which this rule applies.

☒ Domain

☒ Private

☒ Public

Interface types

Specify the interface types to which this rule applies.

Edge traversal

Edge traversal allows the computer to accept unsolicited inbound packets that have passed through an edge device such as a Network Address Translation (NAT) router or firewall.

Block edge traversal

Prevent applications from receiving unsolicited traffic from the Internet through a NAT edge device.

OK Cancel Apply

open port 445 Properties

General | Programs and Services | Remote Computers

Authorized users

☐ Only allow connections from these users

Exceptions

☐ Skip this rule for connections from these users

OK Cancel Apply

open port 445 Properties

General | Programs and Services | Remote Computers

Authorized users

☐ Only allow connections from these users

Exceptions

☐ Skip this rule for connections from these users

OK Cancel Apply

Home > usacestorage | File shares >

usacecivil3d SMB File share

Search x <<

Overview

- Diagnose and solve problems
- Access Control (IAM)
- Browse
- Operations
 - Snapshots
 - Backup

Connect Upload Refresh Add directory Delete

Essentials

Storage account : usacestorage
Resource group (...) : BDA_Development_Services
Location : East US
Primary/Secondary ... : Primary: East US, Secondary: West US
Subscription (move) : Azure subscription 1
Subscription ID : cb73fb8e-9bd6-4427-b157-3120ddf52c09

Properties Capabilities (2) Tutorials

Size

Maximum capacity : 100 TiB
Used capacity : 0 B
Tier : Transaction optimized

Performance

Maximum IO/s ① : 20000
Ingress rate ① : 300 MiB / s
Egress rate ① : 300 MiB / s

Snapshots : 1 snapshot
Last modified : 5/25/2024, 8:31:20 PM
Backup ① : Configured

```
$connectTestResult = Test-NetConnection -ComputerName usacestorage.file.core.windows.net -Port 445
if ($connectTestResult.TcpTestSucceeded) {
    # Save the password so the drive will persist on reboot
    cmd.exe /C "cmdkey /add:"usacestorage.file.core.windows.net"

/user:"localhost\usacestorage"

/pass:"ZEIQQ31gR8wJp0PCnxJb+IWEEQtWVUW2SzZMjOMYn6SQczc9PJIEspJgAkNiQxfWVnXrftR5cm9E+AStO4pqQQ=="
```

```
# Mount the drive
New-PSDrive -Name U -PSProvider FileSystem -Root
```

```
"\usacestorage.file.core.windows.net\usacecivil3d"
```

```
-Persist
} else {
    Write-Error -Message "Unable to reach the Azure storage account via port 445. Check to make sure your organization or ISP is not blocking port 445, or use Azure P2S VPN, Azure S2S VPN, or Express Route to tunnel SMB traffic over a different port."
}
```

Connect

usacecivil3d

'Secure transfer required' is enabled on the storage account. SMB clients connecting to this share must support SMB protocol version 3 or higher in order to handle the encryption requirement. Click here to learn more.

Windows Linux macOS

To connect to this Azure file share from Windows, choose from the following authentication methods and run the PowerShell commands from a normal (not elevated) PowerShell terminal:

Drive letter
U

Authentication method
☐ Active Directory or Microsoft Entra
☒ Storage account key

Connecting to a share using the storage account key is only appropriate for admin access. Mounting the Azure file share with the Active Directory or Microsoft Entra identity of the user is preferred. [Learn more](#)

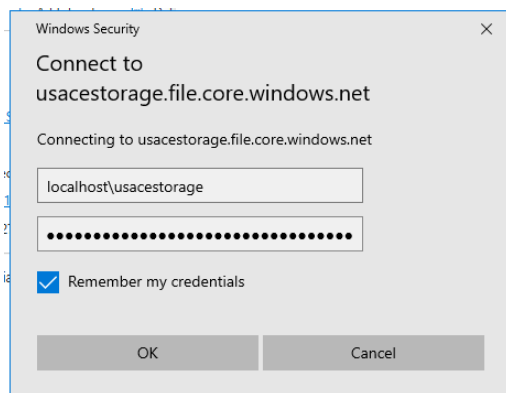
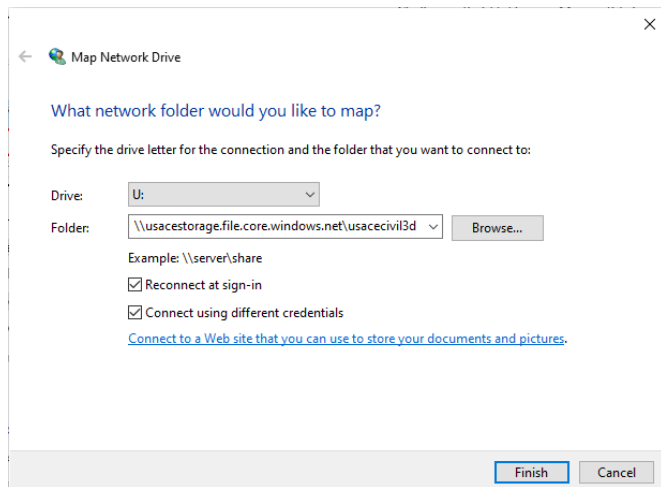
Hide Script

```
$connectTestResult = Test-NetConnection -ComputerName
usacestorage.file.core.windows.net -Port 445
if ($connectTestResult.TcpTestSucceeded) {
    # Save the password so the drive will persist on reboot
    cmd.exe /C "cmdkey /add:"usacestorage.file.core.windows.net"
/user:"localhost\usacestorage"
/pass:"ZEIQQ31gR8wJp0PCnxJb+IWEEQtWVUW2SzZMjOMYn6SQczc9PJIEspJgAkNiQxfWVnXrftR5cm9E+AStO4pqQQ=="
    # Mount the drive
    New-PSDrive -Name U -PSProvider FileSystem -Root
"\usacestorage.file.core.windows.net\usacecivil3d" -Persist
} else {
    Write-Error -Message "Unable to reach the Azure storage account via port 445. Check to make sure your organization or ISP is not blocking port 445, or use Azure P2S VPN, Azure S2S VPN, or Express Route to tunnel SMB traffic over a different port."
}
```

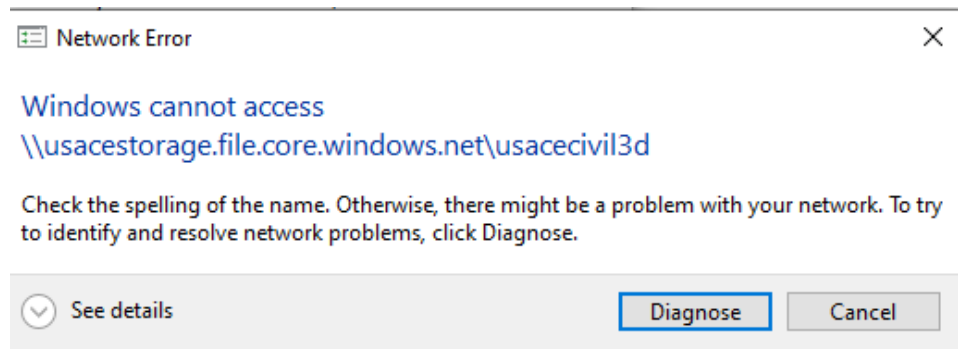
This script will check to see if this storage account is accessible via TCP port 445, which is the port SMB uses. If port 445 is available, your Azure file share will be persistently mounted. Your organization or internet service provider (ISP) may block port 445, however you may use Azure [Point-to-Site \(P2S\) VPN](#), Azure [Site-to-Site \(S2S\) VPN](#), or [ExpressRoute](#) to tunnel SMB traffic to your Azure file share over a different port.

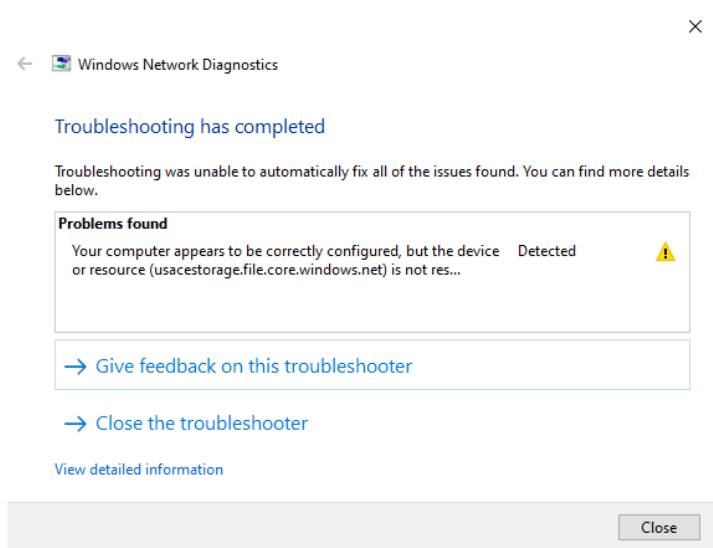
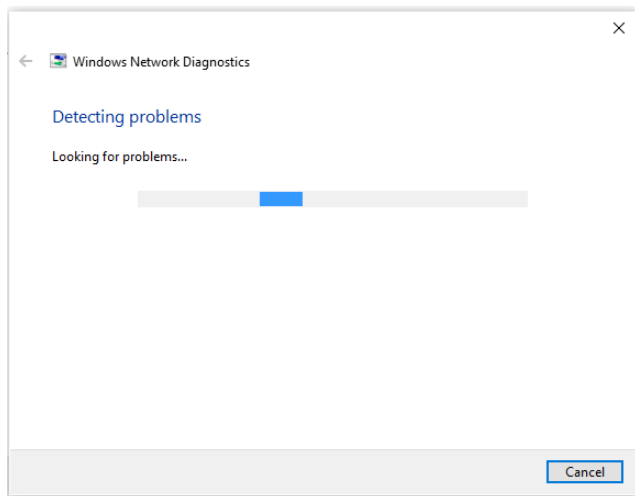
Note: The script will only work on Windows Server 2012 and above.

[Learn how to circumvent the port 445 problem \(VPN\)](#)




/user:``"localhost\usacestorage`"
/pass:``"ZEIQQ31gR8wJp0PCnxJb+IWEEQtWVUW2SzZMjOMYn6SQczc9PJIEspJgAkNiQxfWVnXrftR5cm9E+AStO4pqQQ==`""





Windows Network Diagnostics

Issues found

Your computer appears to be correctly configured, but the d... Detected 
Contact your network administrator or Internet service provi... Completed

Issues found

■ Your computer appears to be correctly configured, but the device or resource (usacestorage.file.core.windows.net) is not responding Detected 

Contact your network administrator or Internet service provider (ISP) Completed

Windows can't communicate with the device or resource (usacestorage.file.core.windows.net). The computer or service you are trying to reach might be temporarily unavailable.

Detection details

Diagnostics Information (Network Adapter)

Details about network adapter diagnosis:

Network adapter Wi-Fi driver information:

```
Description . . . . . : Intel(R) Dual Band Wireless-AC 3165
Manufacturer . . . . . : Intel Corporation
Provider . . . . . : Microsoft
Version . . . . . : 17.15.0.5
Inf File Name . . . . . : C:\WINDOWS\INF\netwbw02.inf
Inf File Date . . . . . : Saturday, December 7, 2019 9:07:47 AM
Section Name . . . . . : Install_MPCIEX_GENM2_3165_AC_HMC_WINB_64_AC
Hardware ID . . . . . : pci\ven_8086&dev_3165&subsys_40108086
Instance Status Flags . . . . : 0x180200a
Device Manager Status Code . . : 0
IfType . . . . . : 71
Physical Media Type . . . . . : 9
```

Diagnostics Information (Wireless Connectivity)

Details about wireless connectivity diagnosis:

Information for connection being diagnosed
Interface GUID: bb214532-d5c3-4aed-8c32-2a8e79354a61
Interface name: Intel(R) Dual Band Wireless-AC 3165
Interface type: Native Wi-Fi

Connection incident diagnosed
Auto Configuration ID: 1
Connection ID: 1

Connection status summary
Connection started at: 2024-05-24 21:14:25-487
Profile match: Success
Pre-Association: Success
Association: Success
Security and Authentication: Success

List of visible access point(s): 27 item(s) total, 27 item(s) displayed

BSSID	BSS Type	PHY	Signal (dB)	Chnl/freq	SSID
BE-D7-D4-68-DB-C5	Infra	<unknown>	-82	5200000	DIRECT-roku-9SX-0C80E1
14-3F-C3-25-C7-4F	Infra	<unknown>	-87	3	NewBernLife
32-CD-A7-B8-30-48	Infra	g	-74	11	DIRECT-UMM2070 Series

6A-14-01-81-66-1E	Infra	<unknown>	-55	6	DIRECT-xrMFC-J480DW_BR661e
0C-B9-37-7A-48-38	Infra	<unknown>	-95	1	MyAltice 7a4835
E4-F0-42-DC-80-38	Infra	<unknown>	-94	11	SantaRosa
A4-CF-D2-C3-73-68	Infra	<unknown>	-90	1	MyOptimum c37365
5E-53-C3-AF-02-66	Infra	<unknown>	-86	5200000	(Unnamed Network)
5C-53-C3-35-43-C8	Infra	<unknown>	-85	1	lucyethel
14-22-3B-04-19-82	Infra	<unknown>	-87	1	furbabies
A4-CF-D2-63-F8-32	Infra	<unknown>	-90	11	wi believe i can fi
84-70-D7-7E-CA-C7	Infra	<unknown>	-76	6	407
84-70-D7-7E-CA-CA	Infra	<unknown>	-75	6	(Unnamed Network)
84-70-D7-7E-CA-C4	Infra	<unknown>	-78	6	(Unnamed Network)
A4-CF-D2-57-E6-8C	Infra	<unknown>	-71	1	MyAltice 57e689
80-69-1A-81-BB-C5	Infra	<unknown>	-91	11	R2
14-22-3B-56-BF-C2	Infra	<unknown>	-82	6	furbabies
A4-CF-D2-2A-FF-9A	Infra	<unknown>	-41	6	MyAltice 2aff97
FA-8F-CA-85-D7-6D	Infra	<unknown>	-60	6	Living Room speaker.k,
5C-53-C3-62-F0-8A	Infra	<unknown>	-74	1	MyOptimum 62f087
5C-53-C3-AF-02-5A	Infra	<unknown>	-67	1	MyOptimum af0257
5C-53-C3-F6-82-12	Infra	<unknown>	-53	1	MyOptimum f6820f
0C-B9-37-A8-D8-60	Infra	<unknown>	-76	1	Gypsy Dreams
64-51-06-6D-0E-3D	Infra	g	-70	1	HP-Print-3D-ENVY 5530 series
5C-53-C3-0B-38-8C	Infra	<unknown>	-51	1	MyOptimum 0b3889
A4-CF-D2-2A-FF-9B	Infra	<unknown>	-56	5200000	MyAltice 2aff97
5C-53-C3-AF-02-5B	Infra	<unknown>	-85	5200000	MyOptimum af0257

Connection History

Information for Auto Configuration ID 1

List of visible networks: 27 item(s) total, 27 item(s) displayed

BSS Type	PHY	Security	Signal (RSSI)	Compatible	SSID	
Infra	<unknown>	Yes		13	Yes	SkySail
Infra	<unknown>	Yes		70	Yes	(Unnamed Network)
Infra	<unknown>	Yes		33	Yes	DIRECT-roku-9SX-0C80E1
Infra	g	Yes	45	Yes		DIRECT-UMM2070 Series
Infra	<unknown>	Yes		81	Yes	DIRECT-xrMFC-J480DW_BR661e
Infra	<unknown>	Yes		8	Yes	NBGM Port
Infra	<unknown>	Yes		18	Yes	MyOptimum c37365
Infra	<unknown>	Yes		11	Yes	NETGEAR94-5G
Infra	<unknown>	Yes		33	Yes	Nacho Wifi
Infra	<unknown>	Yes		16	Yes	MyAltice 7212eb
Infra	<unknown>	Yes		26	Yes	lucyethel
Infra	<unknown>	Yes		23	Yes	TMOBILE-9104
Infra	<unknown>	Yes		25	Yes	furbabies
Infra	<unknown>	Yes		80	Yes	MyOptimum 0b3889
Infra	<unknown>	Yes		20	Yes	wi believe i can fi
Infra	<unknown>	Yes		41	Yes	407
Infra	<unknown>	No		43	Yes	(Unnamed Network)
Infra	<unknown>	Yes		51	Yes	MyAltice 57e689
Infra	<unknown>	Yes		18	Yes	R2
Infra	<unknown>	Yes		99	Yes	MyAltice 2aff97
Infra	<unknown>	No		65	Yes	Living Room speaker.k,
Infra	<unknown>	Yes		43	Yes	MyOptimum 62f087
Infra	<unknown>	Yes		23	Yes	NETGEAR94
Infra	<unknown>	Yes		56	Yes	MyOptimum af0257
Infra	<unknown>	Yes		35	Yes	MyOptimum f6820f
Infra	<unknown>	Yes		40	Yes	Gypsy Dreams
Infra	g	No	61	Yes		HP-Print-3D-ENVY 5530 series

List of preferred networks: 54 item(s)

Profile: ATTztsrXA2

SSID: ATTztsrXA2

SSID length: 10

Connection mode: Infra

Security: Yes

Set by group policy: No

Connect even if network is not broadcasting: No

Connectable: No

Reason: 0x00028003

Profile: ForRealLiFi-2.4G
 SSID: ForRealLiFi-2.4G
 SSID length: 16
 Connection mode: Infra
 Security: Yes
 Set by group policy: No
 Connect even if network is not broadcasting: No
 Connectable: No
 Reason: 0x00028003
 Profile: Dave's iPhone
 SSID: Dave's iPhone
 SSID length: 15
 Connection mode: Infra
 Security: Yes
 Set by group policy: No
 Connect even if network is not broadcasting: No
 Connectable: No
 Reason: 0x00028001
 Profile: IHG ONE REWARDS Free WI-FI
 SSID: IHG ONE REWARDS Free WI-FI
 SSID length: 26
 Connection mode: Infra
 Security: No
 Set by group policy: No
 Connect even if network is not broadcasting: No
 Connectable: No
 Reason: 0x00028001
 Profile: heridea2019
 SSID: heridea2019
 SSID length: 11
 Connection mode: Infra
 Security: Yes
 Set by group policy: No
 Connect even if network is not broadcasting: No
 Connectable: No
 Reason: 0x00028003
 Profile: Beau Bliss
 SSID: Beau Bliss
 SSID length: 10
 Connection mode: Infra
 Security: Yes
 Set by group policy: No
 Connect even if network is not broadcasting: No
 Connectable: No
 Reason: 0x00028003
 Profile: Emberglow Guest
 SSID: Emberglow Guest
 SSID length: 15
 Connection mode: Infra
 Security: Yes
 Set by group policy: No
 Connect even if network is not broadcasting: No
 Connectable: No
 Reason: 0x00028003
 Profile: KWAgents
 SSID: KWAgents
 SSID length: 8
 Connection mode: Infra
 Security: Yes
 Set by group policy: No
 Connect even if network is not broadcasting: No
 Connectable: No
 Reason: 0x00028001
 Profile: Verizon_4XHVJQ
 SSID: Verizon_4XHVJQ
 SSID length: 14
 Connection mode: Infra
 Security: Yes
 Set by group policy: No
 Connect even if network is not broadcasting: No

Connectable: No
 Reason: 0x00028003
 Profile: MyAltice 2aff97
 SSID: MyAltice 2aff97
 SSID length: 15
 Connection mode: Infra
 Security: Yes
 Set by group policy: No
 Connect even if network is not broadcasting: No
 Connectable: Yes
 Profile: Beach Ball
 SSID: Beach Ball
 SSID length: 10
 Connection mode: Infra
 Security: Yes
 Set by group policy: No
 Connect even if network is not broadcasting: No
 Connectable: No
 Reason: 0x00028003
 Profile: FTFGuest
 SSID: FTFGuest
 SSID length: 8
 Connection mode: Infra
 Security: Yes
 Set by group policy: No
 Connect even if network is not broadcasting: No
 Connectable: No
 Reason: 0x00028003
 Profile: Delnetwork
 SSID: Delnetwork
 SSID length: 10
 Connection mode: Infra
 Security: Yes
 Set by group policy: No
 Connect even if network is not broadcasting: No
 Connectable: No
 Reason: 0x00028003
 Profile: suddenlink.net-FF20-5G
 SSID: suddenlink.net-FF20-5G
 SSID length: 22
 Connection mode: Infra
 Security: Yes
 Set by group policy: No
 Connect even if network is not broadcasting: No
 Connectable: No
 Reason: 0x00028003
 Profile: 12 Ballast Point 2G
 SSID: 12 Ballast Point 2G
 SSID length: 19
 Connection mode: Infra
 Security: Yes
 Set by group policy: No
 Connect even if network is not broadcasting: No
 Connectable: No
 Reason: 0x00028003
 Profile: Ruthless
 SSID: Ruthless
 SSID length: 8
 Connection mode: Infra
 Security: Yes
 Set by group policy: No
 Connect even if network is not broadcasting: No
 Connectable: No
 Reason: 0x00028001
 Profile: SETUP-0A89_EXT
 SSID: SETUP-0A89_EXT
 SSID length: 14
 Connection mode: Infra
 Security: Yes
 Set by group policy: No

```

Connect even if network is not broadcasting: No
Connectable: No
Reason: 0x00028001
Profile: SETUP-0A89
SSID: SETUP-0A89
SSID length: 10
Connection mode: Infra
Security: Yes
Set by group policy: No
Connect even if network is not broadcasting: No
Connectable: No
Reason: 0x00028001
Profile: Ruthless5G
SSID: Ruthless5G
SSID length: 10
Connection mode:

```

Diagnostics Information (Wireless Connectivity)

Details about wireless connectivity diagnosis:

For complete information about this session see the wireless connectivity information event.

```

Helper Class: Auto Configuration
Initialize status: Success

```

```

Information for connection being diagnosed
Interface GUID: bb214532-d5c3-4aed-8c32-2a8e79354a61
Interface name: Intel(R) Dual Band Wireless-AC 3165
Interface type: Native Wi-Fi

```

Result of diagnosis: There may be problem

Diagnostics Information (Wireless Network Adapter)

Details about wireless network adapter diagnosis:

For complete information about this session see the wireless connectivity information event.

```

Helper Class: Native Wi-Fi MSM
Initialize status: Success

```

```

Information for connection being diagnosed
Interface GUID: bb214532-d5c3-4aed-8c32-2a8e79354a61
Interface name: Intel(R) Dual Band Wireless-AC 3165
Interface type: Native Wi-Fi
Profile: MyAltice 2aff97
SSID: MyAltice 2aff97
SSID length: 15
Connection mode: Infra
Security: Yes
Connect even if network is not broadcasting: No

```

Result of diagnosis: There may be problem

Network Diagnostics Log

File Name: [DA342B86-F44D-470E-8FA0-F26608DEBE0B.Diagnose.0.etl](#)

Other Networking Configuration and Logs

File Name: [NetworkConfiguration.cab](#)

Collection information

Computer Name: DESKTOP-NM6GI2B
Windows Version: 10.0
Architecture: x64
Time: Sunday, May 26, 2024 6:57:03 PM

Publisher details

Windows Network Diagnostics

Detects problems with network connectivity.

Package Version: 4.0
Publisher: Microsoft Windows