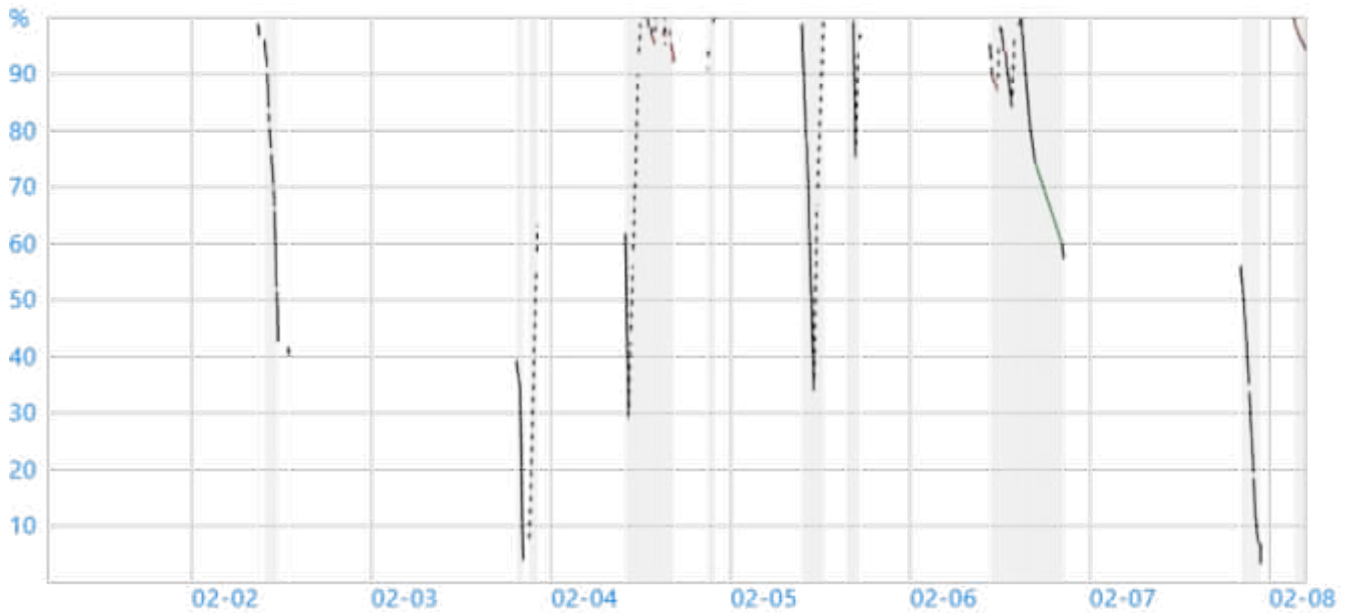


System Power Report

COMPUTER NAME THE-GOSPEL
SYSTEM PRODUCT NAME Dell Inc. Precision 3470
BIOS 1.36.0 11/26/2025
OS BUILD 26100.1.amd64fre.ge_release.240331-1435
OS VERSION 26200.7705
MODERN STANDBY ENABLED Yes
PLATFORM ROLE Mobile
REPORT TIME 2026-02-08 04:47:31

System Power State Transitions

Battery drain over the last 7 days



Legend

GRAPH LINE	DESCRIPTION
Dotted	AC power
Solid	Battery power
No line	System powered off
Grey	Active Scenario
Green	Low System Activity
Orange	Moderate System Activity
Red	High System Activity
Violet	Abnormal Shutdown

Filter Option

Session Length:

All >10 Minutes

States:

All Active Screen Off Sleep Hibernate Shutdown Bug Check

SESSION ID	START TIME	DURATION	STATE	ENERGY CHANGE		CHANGE RATE	% LOW POWER STATE TIME	% CAPACITY REMAINING AT START	
1	2026-01-31 08:36:02	48:12:25	Hibernate	-	-	-	Drain	-	38%
2	2026-02-02 08:48:28	0:00:00	Screen Off	-	-	-	Drain	-	38%
3	08:49:38	0:09:22	Active	-	-	-	Drain	-	38%
4	08:59:02	0:41:47	Hybrid Shutdown	-	-	-	Drain	-	97%
5	09:40:49	0:00:00	Screen Off	-	-	-	Drain	-	96%
6	09:40:49	0:00:41	Active	182 mWh	0% of battery	15,733 mW	Drain	-	96%
7	09:41:31	0:00:12	Screen Off	46 mWh	0% of battery	12,829 mW	Drain	-	96%
8	09:41:59	0:19:00	Active	2,508 mWh	5% of battery	7,920 mW	Drain	-	96%
9	10:02:12	0:00:22	Shutdown	-	-	-	Drain	-	91%
10	10:02:51	0:12:08	Active	3,009 mWh	6% of battery	14,866 mW	Drain	-	90%
11	10:15:43	0:00:16	Shutdown	-	-	-	Drain	-	84%
12	10:16:16	0:03:00	Active	867 mWh	2% of battery	17,314 mW	Drain	-	83%
13	10:20:26	0:00:17	Shutdown	-	-	-	Drain	-	81%
14	10:20:59	0:13:00	Active	1,794 mWh	4% of battery	8,272 mW	Drain	-	80%
15	10:34:08	0:00:17	Shutdown	-	-	-	Drain	-	77%
16	10:34:42	0:18:17	Active	2,568 mWh	5% of battery	8,420 mW	Drain	-	75%
17	10:53:16	0:00:18	Shutdown	-	-	-	Drain	-	70%
18	10:53:50	0:08:34	Active	1,459 mWh	3% of battery	10,210 mW	Drain	-	69%
19	11:02:31	0:00:11	Shutdown	-	-	-	Drain	-	66%
20	11:02:58	0:13:54	Active	19,274 mWh	41% of battery	83,166 mW	Drain	-	96%
21	11:16:52	0:00:23	Screen Off	137 mWh	0% of battery	21,385 mW	Drain	-	54%
22	11:17:15	0:01:15	Sleep	486 mWh	1% of battery	23,295 mW	Drain	-	53%
23	11:18:30	0:00:05	Screen Off	46 mWh	0% of battery	33,072 mW	Drain	-	52%
24	11:18:35	0:00:17	Sleep	91 mWh	0% of battery	18,847 mW	Drain	-	52%
25	11:20:02	0:01:53	Active	1,322 mWh	3% of battery	41,757 mW	Drain	-	52%
26	11:21:56	0:00:18	Screen Off	122 mWh	0% of battery	23,214 mW	Drain	-	49%
27	11:22:15	0:00:40	Sleep	243 mWh	0% of battery	21,752 mW	Drain	-	49%
28	11:22:55	0:06:56	Active	-	-	-	Drain	-	49%

SESSION ID	START TIME	DURATION	STATE	ENERGY CHANGE		CHANGE RATE		% LOW POWER STATE TIME	% CAPACITY REMAINING AT START
29	11:29:54	1:22:58	Hybrid Shutdown	-	-	-	Drain	-	43%
30	12:52:53	0:00:00	Screen Off	-	-	-	Drain	-	42%
31	12:54:03	0:04:31	Active	-	-	-	Drain	-	42%
32	12:58:37	30:25:34	Hybrid Shutdown	-	-	-	Drain	-	40%
33	2026-02-03 19:24:11	0:00:00	Screen Off	-	-	-	Drain	-	40%
34	19:25:22	0:15:40	Active	2,250 mWh	5% of battery	8,609 mW	Drain	-	40%
35	19:41:02	0:00:06	Screen Off	-	-	-	Drain	-	36%
36	19:41:08	0:09:48	Sleep	243 mWh	0% of battery	1,486 mW	Drain	-	36%
37	19:50:57	0:22:19	Active	-	-	-	Drain	-	35%
38	20:13:16	0:48:27	Hibernate	-	-	-	Drain	-	4%
39	21:01:44	0:00:00	Screen Off	-	-	-	Charge	-	4%
40	21:02:58	1:08:45	Active	-	-	-	Charge	-	4%
41	22:11:45	11:43:41	Hybrid Shutdown	-	-	-	Charge	-	63%
42	2026-02-04 09:55:26	0:00:00	Screen Off	-	-	-	Charge	-	63%
43	09:55:26	0:00:00	Active	-	-	-	Charge	-	63%
44	09:56:36	0:23:52	Active	16,112 mWh	34% of battery	40,489 mW	Drain	-	63%
45	10:20:28	0:00:37	Active	91 mWh	0% of battery	8,803 mW	Charge	-	29%
46	10:21:05	0:00:03	Active	76 mWh	0% of battery	68,786 mW	Drain	-	29%
47	10:21:09	0:00:01	Active	30 mWh	0% of battery	107,095 mW	Charge	-	29%
48	10:21:10	0:00:01	Active	15 mWh	0% of battery	34,956 mW	Drain	-	29%
49	10:21:12	0:16:46	Active	-	-	-	Charge	-	29%
50	10:37:58	0:00:04	Active	-	-	-	Drain	-	42%
51	10:38:02	0:58:41	Active	-	-	-	Charge	-	42%
52	11:36:43	0:02:01	Screen Off	-	-	-	Charge	-	90%
53	11:38:45	0:48:09	Active	-	-	-	Charge	-	92%
54	12:26:54	0:00:00	Screen Off	-	-	-	Charge	-	100%
55	12:26:54	0:00:11	Screen Off	-	-	-	Drain	-	100%
56	12:27:06	0:02:41	Sleep	-	-	-	Drain	-	100%
57	12:29:48	0:00:05	Active	-	-	-	Charge	-	100%
58	12:29:54	0:00:00	Screen Off	-	-	-	Charge	-	100%

SESSION ID	START TIME	DURATION	STATE	ENERGY CHANGE		CHANGE RATE		% LOW POWER STATE TIME	% CAPACITY REMAINING AT START
59	12:29:54	0:00:41	Sleep	-	-	-	Charge	-	100%
60	12:30:35	0:00:01	Active	-	-	-	Charge	-	100%
61	12:30:37	0:00:00	Screen Off	-	-	-	Charge	-	100%
62	12:30:37	0:00:08	Sleep	-	-	-	Charge	-	100%
63	12:30:45	0:29:26	Active	-	-	-	Charge	-	100%
64	13:00:11	0:01:10	Active	776 mWh	2% of battery	39,810 mW	Drain	-	100%
65	13:01:21	0:16:13	Active	-	-	-	Charge	-	98%
66	13:17:35	0:00:00	Screen Off	-	-	-	Charge	-	100%
67	13:17:35	0:00:01	Sleep	-	-	-	Charge	-	100%
68	13:17:36	0:00:00	Screen Off	-	-	-	Charge	-	100%
69	13:17:36	0:02:26	Active	-	-	-	Charge	-	100%
70	13:20:02	0:00:07	Active	821 mWh	2% of battery	416,796 mW	Drain	-	100%
71	13:20:09	0:00:03	Active	-	-	-	Charge	-	98%
72	13:20:13	0:00:03	Active	836 mWh	2% of battery	772,304 mW	Drain	-	100%
73	13:20:17	0:00:51	Active	-	-	-	Charge	-	98%
74	13:21:09	0:01:18	Active	973 mWh	2% of battery	44,710 mW	Drain	-	100%
75	13:22:27	0:00:01	Screen Off	-	-	-	Drain	-	98%
76	13:22:29	0:00:08	Active	-	-	-	Drain	-	98%
77	13:22:37	0:00:05	Active	-	-	-	Charge	-	98%
78	13:22:42	0:03:57	Active	1,414 mWh	3% of battery	21,459 mW	Drain	-	100%
79	13:26:39	0:02:27	Screen Off	106 mWh	0% of battery	2,589 mW	Drain	-	97%
80	13:29:06	0:17:43	Sleep	502 mWh	1% of battery	1,699 mW	Drain	SW: 0%	97%
81	13:46:45	0:00:58	Active	122 mWh	0% of battery	7,474 mW	Drain	-	96%
82	13:47:45	1:22:40	Active	-	-	-	Charge	-	95%
83	15:10:24	0:00:07	Active	2,235 mWh	5% of battery	1,068,507 mW	Drain	-	100%
84	15:10:32	0:00:06	Active	-	-	-	Charge	-	95%
85	15:10:38	0:00:05	Active	2,265 mWh	5% of battery	1,480,346 mW	Drain	-	100%
86	15:10:44	0:00:04	Active	-	-	-	Charge	-	95%
87	15:10:48	0:00:03	Active	2,280 mWh	5% of battery	2,089,786 mW	Drain	-	100%
88	15:10:52	0:04:33	Active	-	-	-	Charge	-	95%
89	15:15:25	0:15:11	Screen Off	-	-	-	Charge	-	100%

SESSION ID	START TIME	DURATION	STATE	ENERGY CHANGE		CHANGE RATE	% LOW POWER STATE TIME	% CAPACITY REMAINING AT START
90	15:30:36	0:36:22	Sleep	2,296 mWh	5% of battery	3,787 mW	Charge	SW: 0% - 100%
91	16:06:54	0:00:05	Screen Off	-	-	-	Drain	- 95%
92	16:06:59	0:01:14	Sleep	121 mWh	0% of battery	5,848 mW	Drain	- 95%
93	16:08:13	0:00:44	Active	152 mWh	0% of battery	12,194 mW	Drain	- 95%
94	16:08:58	0:04:38	Screen Off	441 mWh	1% of battery	5,709 mW	Drain	- 95%
95	16:13:36	0:07:02	Sleep	578 mWh	1% of battery	4,923 mW	Drain	SW: 0% - 94%
96	16:20:34	0:00:05	Screen Off	-	-	-	Drain	- 92%
97	16:20:39	0:01:42	Sleep	152 mWh	0% of battery	5,325 mW	Drain	- 92%
98	16:22:22	0:00:14	Active	-	-	-	Drain	- 92%
99	16:22:36	4:32:36	Hybrid Shutdown	-	-	-	Drain	- 92%
100	20:55:13	0:00:00	Screen Off	-	-	-	Drain	- 92%
101	20:55:13	0:00:36	Active	396 mWh	1% of battery	38,955 mW	Drain	- 92%
102	20:55:50	0:00:07	Screen Off	15 mWh	0% of battery	7,577 mW	Drain	- 91%
103	20:55:57	0:00:42	Active	91 mWh	0% of battery	7,723 mW	Drain	- 91%
104	20:57:17	0:07:54	Active	-	-	-	Charge	- 91%
105	21:05:11	0:04:38	Screen Off	-	-	-	Charge	- 95%
106	21:09:49	0:41:14	Active	-	-	-	Charge	- 97%
107	21:51:08	0:00:00	Active	-	-	-	Drain	- 100%
108	21:51:08	11:39:16	Hybrid Shutdown	-	-	-	Drain	- 100%
109	2026-02-05 09:30:25	0:00:00	Screen Off	-	-	-	Drain	- 100%
110	09:31:35	0:30:46	Active	9,470 mWh	20% of battery	18,462 mW	Drain	- 100%
111	10:02:21	0:02:06	Screen Off	547 mWh	1% of battery	15,623 mW	Drain	- 80%
112	10:04:27	0:02:41	Sleep	228 mWh	0% of battery	5,092 mW	Drain	- 79%
113	10:07:08	0:00:05	Screen Off	15 mWh	0% of battery	10,747 mW	Drain	- 78%
114	10:07:13	0:01:01	Sleep	76 mWh	0% of battery	4,471 mW	Drain	- 78%
115	10:09:24	0:09:02	Active	2,539 mWh	5% of battery	16,841 mW	Drain	- 78%
116	10:18:27	0:00:59	Screen Off	228 mWh	0% of battery	13,829 mW	Drain	- 73%
117	10:19:26	0:48:19	Active	18,088 mWh	38% of battery	22,455 mW	Drain	- 72%
118	11:07:46	1:17:49	Active	-	-	-	Charge	- 34%

SESSION ID	START TIME	DURATION	STATE	ENERGY CHANGE		CHANGE RATE		% LOW POWER STATE TIME	% CAPACITY REMAINING AT START
119	12:25:37	3:01:14	Hybrid Shutdown	-	-	-	Charge	-	100%
120	15:26:52	0:00:00	Screen Off	-	-	-	Charge	-	100%
121	15:26:52	0:00:00	Active	-	-	-	Charge	-	100%
122	15:26:52	0:00:22	Active	244 mWh	1% of battery	39,165 mW	Drain	-	100%
123	15:28:02	0:01:09	Active	-	-	-	Charge	-	99%
124	15:29:11	0:00:02	Active	259 mWh	1% of battery	355,299 mW	Drain	-	100%
125	15:29:13	0:54:17	Active	-	-	-	Charge	-	99%
126	16:23:31	0:18:23	Active	11,674 mWh	25% of battery	38,094 mW	Drain	-	100%
127	16:41:54	0:24:41	Active	-	-	-	Charge	-	75%
128	17:06:35	0:07:20	Screen Off	-	-	-	Charge	-	94%
129	17:13:56	0:00:13	Active	-	-	-	Charge	-	97%
130	17:14:11	0:01:01	Active	-	-	-	Drain	-	97%
131	17:15:14	17:22:38	Hibernate	-	-	-	Drain	-	96%
132	2026-02-06 10:37:52	0:00:00	Screen Off	-	-	-	Drain	-	96%
133	10:39:03	0:04:42	Active	1,171 mWh	2% of battery	14,918 mW	Drain	-	96%
134	10:43:45	0:00:04	Screen Off	15 mWh	0% of battery	13,472 mW	Drain	-	94%
135	10:43:49	0:03:04	Active	258 mWh	1% of battery	5,030 mW	Drain	-	94%
136	10:46:53	0:00:40	Screen Off	31 mWh	0% of battery	2,772 mW	Drain	-	93%
137	10:47:34	0:03:27	Active	380 mWh	1% of battery	6,592 mW	Drain	-	93%
138	10:51:01	0:00:00	Active	-	-	-	Charge	-	92%
139	10:51:01	0:00:06	Active	-	-	-	Charge	-	-
140	10:51:07	0:00:00	Active	-	-	-	Drain	-	-
141	10:51:07	0:00:17	Active	-	-	-	Drain	-	-
142	10:51:24	0:00:00	Active	-	-	-	Charge	-	92%
143	10:51:24	0:00:55	Active	-	-	-	Charge	-	-
144	10:52:19	0:00:00	Active	-	-	-	Drain	-	-
145	10:52:19	0:00:01	Active	-	-	-	Drain	-	-
146	10:52:21	0:00:17	Shutdown	-	-	-	Drain	-	92%
147	10:52:38	0:00:51	Active	-	-	-	Drain	-	56%
148	10:53:30	0:00:29	Screen Off	31 mWh	0% of battery	3,745 mW	Drain	-	91%

SESSION ID	START TIME	DURATION	STATE	ENERGY CHANGE		CHANGE RATE		% LOW POWER STATE TIME	% CAPACITY REMAINING AT START
149	10:54:00	0:03:31	Active	562 mWh	1% of battery	9,550 mW	Drain	-	91%
150	10:57:31	0:02:09	Screen Off	106 mWh	0% of battery	2,941 mW	Drain	-	90%
151	10:59:41	0:18:47	Sleep	396 mWh	1% of battery	1,265 mW	Drain	SW: 0%	89%
152	11:18:23	0:00:05	Screen Off	-	-	-	Drain	-	88%
153	11:18:33	0:19:57	Sleep	364 mWh	1% of battery	1,094 mW	Drain	SW: 0%	88%
154	11:38:21	0:02:03	Active	335 mWh	1% of battery	9,782 mW	Drain	-	88%
155	11:40:25	0:21:58	Active	-	-	-	Charge	-	87%
156	12:02:22	0:00:01	Active	-	-	-	Drain	-	98%
157	12:02:24	0:01:46	Screen Off	76 mWh	0% of battery	2,566 mW	Drain	-	98%
158	12:04:11	0:08:06	Sleep	168 mWh	0% of battery	1,244 mW	Drain	-	98%
159	12:12:17	0:15:12	Active	1,596 mWh	3% of battery	6,296 mW	Drain	-	98%
160	12:27:29	0:02:11	Screen Off	91 mWh	0% of battery	2,489 mW	Drain	-	95%
161	12:29:41	0:18:30	Sleep	349 mWh	1% of battery	1,131 mW	Drain	SW: 0%	94%
162	12:48:07	0:48:32	Active	4,469 mWh	9% of battery	5,523 mW	Drain	-	94%
163	13:36:39	1:15:42	Active	-	-	-	Charge	-	84%
164	14:52:22	1:48:35	Active	12,130 mWh	26% of battery	6,702 mW	Drain	-	100%
165	16:40:57	3:35:45	Screen Off	6,901 mWh	15% of battery	1,919 mW	Drain	-	74%
166	20:16:42	0:12:24	Active	-	-	-	Drain	-	60%
167	20:29:08	23:42:53	Hibernate	-	-	-	Drain	-	57%
168	2026-02-07 20:12:02	0:00:00	Screen Off	-	-	-	Drain	-	57%
169	20:13:12	0:29:49	Active	4,894 mWh	10% of battery	9,848 mW	Drain	-	57%
170	20:43:00	0:00:29	Screen Off	15 mWh	0% of battery	1,832 mW	Drain	-	47%
171	20:43:30	0:11:44	Active	1,657 mWh	3% of battery	8,466 mW	Drain	-	47%
172	20:55:14	0:01:04	Screen Off	91 mWh	0% of battery	5,095 mW	Drain	-	43%
173	20:56:19	0:21:24	Active	3,891 mWh	8% of battery	10,906 mW	Drain	-	43%
174	21:17:43	0:00:03	Screen Off	-	-	-	Drain	-	35%
175	21:17:46	0:01:16	Active	304 mWh	1% of battery	14,311 mW	Drain	-	35%
176	21:19:02	0:00:17	Shutdown	-	-	-	Drain	-	34%
177	21:19:20	0:00:51	Active	121 mWh	0% of battery	8,459 mW	Drain	-	33%

SESSION ID	START TIME	DURATION	STATE	ENERGY CHANGE		CHANGE RATE		% LOW POWER STATE TIME	% CAPACITY REMAINING AT START
178	21:20:12	0:01:09	Screen Off	168 mWh	0% of battery	8,706 mW	Drain	-	33%
179	21:21:21	0:03:29	Active	881 mWh	2% of battery	15,143 mW	Drain	-	33%
180	21:24:50	0:00:00	Screen Off	-	-	-	Drain	-	31%
181	21:24:51	0:12:30	Active	2,387 mWh	5% of battery	11,449 mW	Drain	-	31%
182	21:37:21	0:01:28	Screen Off	273 mWh	1% of battery	11,107 mW	Drain	-	26%
183	21:38:50	0:01:07	Active	213 mWh	0% of battery	11,314 mW	Drain	-	25%
184	21:39:57	0:00:00	Screen Off	-	-	-	Drain	-	25%
185	21:39:58	0:14:37	Active	2,766 mWh	6% of battery	11,345 mW	Drain	-	25%
186	21:55:07	0:00:19	Shutdown	-	-	-	Drain	-	19%
187	21:55:42	0:04:28	Active	1,277 mWh	3% of battery	17,102 mW	Drain	-	18%
188	22:00:11	0:00:03	Screen Off	30 mWh	0% of battery	29,323 mW	Drain	-	16%
189	22:00:14	0:03:46	Active	851 mWh	2% of battery	13,505 mW	Drain	-	16%
190	22:04:01	0:00:04	Screen Off	31 mWh	0% of battery	24,222 mW	Drain	-	14%
191	22:04:06	0:07:12	Active	1,124 mWh	2% of battery	9,360 mW	Drain	-	14%
192	22:11:18	0:00:05	Screen Off	16 mWh	0% of battery	9,789 mW	Drain	-	11%
193	22:11:24	0:18:11	Active	2,021 mWh	4% of battery	6,666 mW	Drain	-	11%
194	22:29:35	0:01:15	Screen Off	-	-	-	Drain	-	7%
195	22:30:50	0:02:11	Active	-	-	-	Drain	-	7%
196	22:33:02	0:00:08	Screen Off	-	-	-	Drain	-	7%
197	22:33:10	0:02:23	Active	-	-	-	Drain	-	7%
198	22:35:33	0:01:24	Screen Off	-	-	-	Drain	-	7%
199	22:36:58	0:01:05	Active	-	-	-	Drain	-	7%
200	22:38:03	0:00:53	Screen Off	-	-	-	Drain	-	7%
201	22:38:56	0:04:57	Active	-	-	-	Drain	-	7%
202	22:43:53	0:00:07	Screen Off	-	-	-	Drain	-	7%
203	22:44:01	0:01:03	Active	-	-	-	Drain	-	7%
204	22:45:03	0:00:07	Screen Off	-	-	-	Drain	-	7%
205	22:45:11	0:02:48	Active	-	-	-	Drain	-	7%
206	22:48:00	0:00:32	Shutdown	-	-	-	Drain	-	7%
207	22:48:32	0:01:08	Active	-	-	-	Drain	-	99%
208	22:49:41	0:00:48	Hibernate	-	-	-	Drain	-	3%

SESSION ID	START TIME	DURATION	STATE	ENERGY CHANGE		CHANGE RATE		% LOW POWER STATE TIME	% CAPACITY REMAINING AT START
209	22:50:29	0:00:00	Screen Off	-	-	-	Drain	-	3%
210	22:50:29	0:00:25	Active	-	-	-	Drain	-	3%
211	22:50:55	4:31:01	Hybrid Shutdown	-	-	-	Drain	-	2%
212	2026-02-08 03:21:56	0:00:00	Screen Off	-	-	-	Drain	-	2%
213	03:21:56	0:01:11	Active	-	-	-	Drain	-	2%
214	03:23:08	0:02:08	Screen Off	91 mWh	0% of battery	2,547 mW	Drain	-	99%
215	03:25:17	0:11:22	Sleep	228 mWh	0% of battery	1,203 mW	Drain	SW: 0%	99%
216	03:36:34	0:01:40	Active	243 mWh	0% of battery	8,685 mW	Drain	-	98%
217	03:38:15	0:02:02	Screen Off	61 mWh	0% of battery	1,796 mW	Drain	-	98%
218	03:40:17	0:21:42	Sleep	426 mWh	1% of battery	1,177 mW	Drain	SW: 0%	98%
219	04:01:55	0:01:11	Active	106 mWh	0% of battery	5,362 mW	Drain	-	97%
220	04:03:06	0:02:10	Screen Off	76 mWh	0% of battery	2,089 mW	Drain	-	97%
221	04:05:17	0:03:07	Sleep	61 mWh	0% of battery	1,170 mW	Drain	-	97%
222	04:08:25	0:01:00	Active	106 mWh	0% of battery	6,292 mW	Drain	-	96%
223	04:09:25	0:02:21	Screen Off	76 mWh	0% of battery	1,932 mW	Drain	-	96%
224	04:11:47	0:16:29	Sleep	319 mWh	1% of battery	1,161 mW	Drain	SW: 0%	96%
225	04:28:11	0:00:05	Screen Off	-	-	-	Drain	-	95%
226	04:28:21	0:11:15	Sleep	198 mWh	0% of battery	1,055 mW	Drain	SW: 0%	95%
227	04:39:27	0:00:30	Active	76 mWh	0% of battery	9,045 mW	Drain	-	95%
228	04:39:57	0:02:49	Screen Off	76 mWh	0% of battery	1,611 mW	Drain	-	95%
229	04:42:47	0:02:01	Sleep	46 mWh	0% of battery	1,361 mW	Drain	-	95%
230	04:44:49	0:02:40	Active	-	-	-	Drain	-	95%
231	04:47:30	0:00:00	Report Generated	-	-	-	Drain	-	-

Analysis Results

Analysis of issues that might cause poor battery life

Top

System Power State: Hibernate

SESSION ID	START TIME	DURATION	STATE	ENTRY REASON	EXIT REASON	% CAPACITY REMAINING AT START
1	2026-01-31 08:36:02	48:12:25	Hibernate	Button or Lid	Unknown	38%

Detailed Session Information

+ Battery Information

+ System Event Log

Srum Data

Data obtained from the SRUM database. * in Power Estimation means the power value is from energy meter. Otherwise, it is from software model estimation.

+ Energy Meter

+ Power Estimation

Top

System Power State: Screen Off

SESSION ID	START TIME	DURATION	STATE	ENTRY REASON	EXIT REASON	% CAPACITY REMAINING AT START
2	2026-02-02 08:48:28	0:00:00	Screen Off	Hibernate, or Shutdown	Lid	38%

Detailed Session Information

+ Battery Information

+ General

+ System Event Log

This session contains no detailed information about top offenders.

Top

System Power State: Active

SESSION ID	START TIME	DURATION	STATE	ENTRY REASON	EXIT REASON	% CAPACITY REMAINING AT START
3	2026-02-02 08:49:38	0:09:22	Active	----	----	38%

Detailed Session Information

+ Battery Information

+ System Event Log

Srum Data

Data obtained from the SRUM database. * in Power Estimation means the power value is from energy meter. Otherwise, it is from software model estimation.

+ Energy Meter

+ Power Estimation

Top

System Power State: Hybrid Shutdown

SESSION ID	START TIME	DURATION	STATE	ENTRY REASON	EXIT REASON	% CAPACITY REMAINING AT START
4	2026-02-02 08:59:02	0:41:47	Hybrid Shutdown	Application API	Unknown	97%

Detailed Session Information

- + Battery Information
- + System Event Log

Srum Data

Data obtained from the SRUM database. * in Power Estimation means the power value is from energy meter. Otherwise, it is from software model estimation.

- + Energy Meter
- + Power Estimation

Top

System Power State: Screen Off

SESSION ID	START TIME	DURATION	STATE	ENTRY REASON	EXIT REASON	% CAPACITY REMAINING AT START
5	2026-02-02 09:40:49	0:00:00	Screen Off	Hibernate, or Shutdown	Resume S4 Display Burst	96%

Detailed Session Information

- + Battery Information
- + General
- + System Event Log

This session contains no detailed information about top offenders.

Top

System Power State: Active

SESSION ID	START TIME	DURATION	STATE	ENTRY REASON	EXIT REASON	% CAPACITY REMAINING AT START
6	2026-02-02 09:40:49	0:00:41	Active	----	----	96%

Detailed Session Information

- + Battery Information
- + System Event Log

Srum Data

Data obtained from the SRUM database. * in Power Estimation means the power value is from energy meter. Otherwise, it is from software model estimation.

- + Energy Meter
- + Power Estimation

Top

System Power State: Screen Off

SESSION ID	START TIME	DURATION	STATE	ENTRY REASON	EXIT REASON	% CAPACITY REMAINING AT START
7	2026-02-02 09:41:31	0:00:12	Screen Off	Video Idle Timeout	Input Keyboard	96%

Detailed Session Information

- + Battery Information
- + General
- + System Event Log

Srum Data

Data obtained from the SRUM database. * in Power Estimation means the power value is from energy meter. Otherwise, it is from software model estimation.

- + Energy Meter
- + Power Estimation

This session contains no detailed information about top offenders.

Top

System Power State: Active

SESSION ID	START TIME	DURATION	STATE	ENTRY REASON	EXIT REASON	% CAPACITY REMAINING AT START
8	2026-02-02 09:41:59	0:19:00	Active	----	Kernel API	96%

Detailed Session Information

- + Battery Information
- + System Event Log

Srum Data

Data obtained from the SRUM database. * in Power Estimation means the power value is from energy meter. Otherwise, it is from software model estimation.

- + Energy Meter
- + Power Estimation

Top

System Power State: Shutdown

SESSION ID	START TIME	DURATION	STATE	ENTRY REASON	EXIT REASON	% CAPACITY REMAINING AT START
9	2026-02-02 10:02:12	0:00:22	Shutdown	----	----	91%

Detailed Session Information

- + Battery Information
- + System Event Log

Srum Data

Data obtained from the SRUM database. * in Power Estimation means the power value is from energy meter. Otherwise, it is from software model estimation.

+ Energy Meter

+ Power Estimation

Top

System Power State: Active

SESSION ID	START TIME	DURATION	STATE	ENTRY REASON	EXIT REASON	% CAPACITY REMAINING AT START
10	2026-02-02 10:02:51	0:12:08	Active	----	Kernel API	90%

Detailed Session Information

+ Battery Information

+ System Event Log

Srum Data

Data obtained from the SRUM database. * in Power Estimation means the power value is from energy meter. Otherwise, it is from software model estimation.

+ Energy Meter

+ Power Estimation

Top

System Power State: Shutdown

SESSION ID	START TIME	DURATION	STATE	ENTRY REASON	EXIT REASON	% CAPACITY REMAINING AT START
11	2026-02-02 10:15:43	0:00:16	Shutdown	----	----	84%

Detailed Session Information

+ Battery Information

+ System Event Log

Srum Data

Data obtained from the SRUM database. * in Power Estimation means the power value is from energy meter. Otherwise, it is from software model estimation.

+ Energy Meter

+ Power Estimation

Top

System Power State: Active

SESSION ID	START TIME	DURATION	STATE	ENTRY REASON	EXIT REASON	% CAPACITY REMAINING AT START
12	2026-02-02 10:16:16	0:03:00	Active	----	Kernel API	83%

Detailed Session Information

+ Battery Information

+ System Event Log

Srum Data

Data obtained from the SRUM database. * in Power Estimation means the power value is from energy meter. Otherwise, it is from software model estimation.

+ Energy Meter

+ Power Estimation

Top

System Power State: Shutdown

SESSION ID	START TIME	DURATION	STATE	ENTRY REASON	EXIT REASON	% CAPACITY REMAINING AT START
13	2026-02-02 10:20:26	0:00:17	Shutdown	----	----	81%

Detailed Session Information

+ Battery Information

+ System Event Log

Srum Data

Data obtained from the SRUM database. * in Power Estimation means the power value is from energy meter. Otherwise, it is from software model estimation.

+ Energy Meter

+ Power Estimation

Top

System Power State: Active

SESSION ID	START TIME	DURATION	STATE	ENTRY REASON	EXIT REASON	% CAPACITY REMAINING AT START
14	2026-02-02 10:20:59	0:13:00	Active	----	Kernel API	80%

Detailed Session Information

+ Battery Information

+ System Event Log

Srum Data

Data obtained from the SRUM database. * in Power Estimation means the power value is from energy meter. Otherwise, it is from software model estimation.

+ Energy Meter

+ Power Estimation

Top

System Power State: Shutdown

SESSION ID	START TIME	DURATION	STATE	ENTRY REASON	EXIT REASON	% CAPACITY REMAINING AT START
15	2026-02-02 10:34:08	0:00:17	Shutdown	----	----	77%

Detailed Session Information

- + Battery Information
- + System Event Log

Srum Data

Data obtained from the SRUM database. * in Power Estimation means the power value is from energy meter. Otherwise, it is from software model estimation.

- + Energy Meter
- + Power Estimation

Top

System Power State: Active

SESSION ID	START TIME	DURATION	STATE	ENTRY REASON	EXIT REASON	% CAPACITY REMAINING AT START
16	2026-02-02 10:34:42	0:18:17	Active	----	Kernel API	75%

Detailed Session Information

- + Battery Information
- + System Event Log

Srum Data

Data obtained from the SRUM database. * in Power Estimation means the power value is from energy meter. Otherwise, it is from software model estimation.

- + Energy Meter
- + Power Estimation

Top

System Power State: Shutdown

SESSION ID	START TIME	DURATION	STATE	ENTRY REASON	EXIT REASON	% CAPACITY REMAINING AT START
17	2026-02-02 10:53:16	0:00:18	Shutdown	----	----	70%

Detailed Session Information

- + Battery Information
- + System Event Log

Srum Data

Data obtained from the SRUM database. * in Power Estimation means the power value is from energy meter. Otherwise, it is from software model estimation.

+ Energy Meter

+ Power Estimation

Top

System Power State: Active

SESSION ID	START TIME	DURATION	STATE	ENTRY REASON	EXIT REASON	% CAPACITY REMAINING AT START
18	2026-02-02 10:53:50	0:08:34	Active	----	Kernel API	69%

Detailed Session Information

+ Battery Information

+ System Event Log

Srum Data

Data obtained from the SRUM database. * in Power Estimation means the power value is from energy meter. Otherwise, it is from software model estimation.

+ Energy Meter

+ Power Estimation

Top

System Power State: Shutdown

SESSION ID	START TIME	DURATION	STATE	ENTRY REASON	EXIT REASON	% CAPACITY REMAINING AT START
19	2026-02-02 11:02:31	0:00:11	Shutdown	----	----	66%

Detailed Session Information

+ Battery Information

+ System Event Log

Srum Data

Data obtained from the SRUM database. * in Power Estimation means the power value is from energy meter. Otherwise, it is from software model estimation.

+ Energy Meter

+ Power Estimation

Top

System Power State: Active

SESSION ID	START TIME	DURATION	STATE	ENTRY REASON	EXIT REASON	% CAPACITY REMAINING AT START
20	2026-02-02 11:02:58	0:13:54	Active	Initialization	MonitorOff	96%

Detailed Session Information

+ Battery Information

+ System Event Log

Screen Brightness Duration Histogram

Duration in seconds at various screen brightness levels



Search Indexer Data

- + Query Events
- + File System Change Events

Srum Data

Data obtained from the SRUM database. * in Power Estimation means the power value is from energy meter. Otherwise, it is from software model estimation.

- + Energy Meter
- + Power Estimation

Top

System Power State: Screen Off

SESSION ID	START TIME	DURATION	STATE	ENTRY REASON	EXIT REASON	% CAPACITY REMAINING AT START
21	2026-02-02 11:16:52	0:00:23	Screen Off	Video Idle Timeout	Transition To Sleep	54%

Detailed Session Information

- + Battery Information
- + General
- + System Event Log

Srum Data

Data obtained from the SRUM database. * in Power Estimation means the power value is from energy meter. Otherwise, it is from software model estimation.

- + Energy Meter
- + Power Estimation

This session contains no detailed information about top offenders.

Top

System Power State: Sleep

SESSION ID	START TIME	DURATION	STATE	ENTRY REASON	EXIT REASON	% CAPACITY REMAINING AT START
22	2026-02-02 11:17:15	0:01:15	Sleep	Transition To Sleep	Restricted Standby Battery Drain Budget Exceeded	53%

Detailed Session Information

- + Battery Information
- + General
- + System Event Log

Srum Data

Data obtained from the SRUM database. * in Power Estimation means the power value is from energy meter. Otherwise, it is from software model estimation.

- + Energy Meter
- + Power Estimation

This session contains no detailed information about top offenders.

Top

System Power State: Screen Off

SESSION ID	START TIME	DURATION	STATE	ENTRY REASON	EXIT REASON	% CAPACITY REMAINING AT START
23	2026-02-02 11:18:30	0:00:05	Screen Off	Restricted Standby Battery Drain Budget Exceeded	Transition To Sleep	52%

Detailed Session Information

- + Battery Information
- + General
- + System Event Log

Srum Data

Data obtained from the SRUM database. * in Power Estimation means the power value is from energy meter. Otherwise, it is from software model estimation.

- + Energy Meter
- + Power Estimation

This session contains no detailed information about top offenders.

Top

System Power State: Sleep

SESSION ID	START TIME	DURATION	STATE	ENTRY REASON	EXIT REASON	% CAPACITY REMAINING AT START
24	2026-02-02 11:18:35	0:00:17	Sleep	Transition To Sleep	Input Touchpad	52%

Detailed Session Information

- + Battery Information
- + General
- + System Event Log

Strum Data

Data obtained from the SRUM database. * in Power Estimation means the power value is from energy meter. Otherwise, it is from software model estimation.

- + Energy Meter
- + Power Estimation

This session contains no detailed information about top offenders.

Top

System Power State: Active

SESSION ID	START TIME	DURATION	STATE	ENTRY REASON	EXIT REASON	% CAPACITY REMAINING AT START
25	2026-02-02 11:20:02	0:01:53	Active	MonitorOn	MonitorOff	52%

Detailed Session Information

- + Battery Information
- + System Event Log

Screen Brightness Duration Histogram

Duration in seconds at various screen brightness levels



Search Indexer Data

- + File System Change Events

Srum Data

Data obtained from the SRUM database. * in Power Estimation means the power value is from energy meter. Otherwise, it is from software model estimation.

+ Energy Meter

+ Power Estimation

Top

System Power State: Screen Off

SESSION ID	START TIME	DURATION	STATE	ENTRY REASON	EXIT REASON	% CAPACITY REMAINING AT START
26	2026-02-02 11:21:56	0:00:18	Screen Off	Video Idle Timeout	Transition To Sleep	49%

Detailed Session Information

+ Battery Information

+ General

+ System Event Log

Srum Data

Data obtained from the SRUM database. * in Power Estimation means the power value is from energy meter. Otherwise, it is from software model estimation.

+ Energy Meter

+ Power Estimation

This session contains no detailed information about top offenders.

Top

System Power State: Sleep

SESSION ID	START TIME	DURATION	STATE	ENTRY REASON	EXIT REASON	% CAPACITY REMAINING AT START
27	2026-02-02 11:22:15	0:00:40	Sleep	Transition To Sleep	Input Touchpad	49%

Detailed Session Information

+ Battery Information

+ General

+ System Event Log

Srum Data

Data obtained from the SRUM database. * in Power Estimation means the power value is from energy meter. Otherwise, it is from software model estimation.

+ Energy Meter

+ Power Estimation

This session contains no detailed information about top offenders.

Top

System Power State: Active

SESSION ID	START TIME	DURATION	STATE	ENTRY REASON	EXIT REASON	% CAPACITY REMAINING AT START
28	2026-02-02 11:22:55	0:06:56	Active	MonitorOn	MonitorOff	49%

Detailed Session Information

- + Battery Information
- + System Event Log

Screen Brightness Duration Histogram

Duration in seconds at various screen brightness levels



Search Indexer Data

- + Query Events
- + File System Change Events

Srum Data

Data obtained from the SRUM database. * in Power Estimation means the power value is from energy meter. Otherwise, it is from software model estimation.

- + Energy Meter
- + Power Estimation

Top

System Power State: Hybrid Shutdown

SESSION ID	START TIME	DURATION	STATE	ENTRY REASON	EXIT REASON	% CAPACITY REMAINING AT START
29	2026-02-02 11:29:54	1:22:58	Hybrid Shutdown	Application API	Unknown	43%

Detailed Session Information

- + Battery Information
- + System Event Log

Srum Data

Data obtained from the SRUM database. * in Power Estimation means the power value is from energy meter. Otherwise, it is from software model estimation.

+ Energy Meter

+ Power Estimation

Top

System Power State: Screen Off

SESSION ID	START TIME	DURATION	STATE	ENTRY REASON	EXIT REASON	% CAPACITY REMAINING AT START
30	2026-02-02 12:52:53	0:00:00	Screen Off	Hibernate, or Shutdown	Resume S4 Display Burst	42%

Detailed Session Information

+ Battery Information

+ General

+ System Event Log

This session contains no detailed information about top offenders.

Top

System Power State: Active

SESSION ID	START TIME	DURATION	STATE	ENTRY REASON	EXIT REASON	% CAPACITY REMAINING AT START
31	2026-02-02 12:54:03	0:04:31	Active	MonitorOn	MonitorOff	42%

Detailed Session Information

+ Battery Information

+ System Event Log

Screen Brightness Duration Histogram

Duration in seconds at various screen brightness levels



Search Indexer Data

- + Query Events
- + File System Change Events

Srum Data

Data obtained from the SRUM database. * in Power Estimation means the power value is from energy meter. Otherwise, it is from software model estimation.

- + Energy Meter
- + Power Estimation

Top

System Power State: Hybrid Shutdown

SESSION ID	START TIME	DURATION	STATE	ENTRY REASON	EXIT REASON	% CAPACITY REMAINING AT START
32	2026-02-02 12:58:37	30:25:34	Hybrid Shutdown	Application API	Unknown	40%

Detailed Session Information

- + Battery Information
- + System Event Log

Srum Data

Data obtained from the SRUM database. * in Power Estimation means the power value is from energy meter. Otherwise, it is from software model estimation.

- + Energy Meter
- + Power Estimation

Top

System Power State: Screen Off

SESSION ID	START TIME	DURATION	STATE	ENTRY REASON	EXIT REASON	% CAPACITY REMAINING AT START
33	2026-02-03 19:24:11	0:00:00	Screen Off	Hibernate, or Shutdown	Resume S4 Display Burst	40%

Detailed Session Information

- + Battery Information
- + General
- + System Event Log

This session contains no detailed information about top offenders.

Top

System Power State: Active

SESSION ID	START TIME	DURATION	STATE	ENTRY REASON	EXIT REASON	% CAPACITY REMAINING AT START
34	2026-02-03 19:25:22	0:15:40	Active	MonitorOn	MonitorOff	40%

Detailed Session Information

- + Battery Information
- + System Event Log

Screen Brightness Duration Histogram

Duration in seconds at various screen brightness levels



Search Indexer Data

- + Query Events
- + File System Change Events

Srum Data

Data obtained from the SRUM database. * in Power Estimation means the power value is from energy meter. Otherwise, it is from software model estimation.

- + Energy Meter
- + Power Estimation



System Power State: Screen Off

SESSION ID	START TIME	DURATION	STATE	ENTRY REASON	EXIT REASON	% CAPACITY REMAINING AT START
35	2026-02-03 19:41:02	0:00:06	Screen Off	Video Idle Timeout	Transition To Sleep	36%

Detailed Session Information

- + Battery Information
- + General
- + System Event Log

Srum Data

Data obtained from the SRUM database. * in Power Estimation means the power value is from energy meter. Otherwise, it is from software model estimation.

- + Energy Meter

- + Power Estimation

This session contains no detailed information about top offenders.

Top

System Power State: Sleep

SESSION ID	START TIME	DURATION	STATE	ENTRY REASON	EXIT REASON	% CAPACITY REMAINING AT START
36	2026-02-03 19:41:08	0:09:48	Sleep	Transition To Sleep	Input Keyboard	36%

Detailed Session Information

- + Battery Information

- + General

- + System Event Log

Srum Data

Data obtained from the SRUM database. * in Power Estimation means the power value is from energy meter. Otherwise, it is from software model estimation.

- + Energy Meter

- + Power Estimation

This session contains no detailed information about top offenders.

Top

System Power State: Active

SESSION ID	START TIME	DURATION	STATE	ENTRY REASON	EXIT REASON	% CAPACITY REMAINING AT START
37	2026-02-03 19:50:57	0:22:19	Active	MonitorOn	MonitorOff	35%

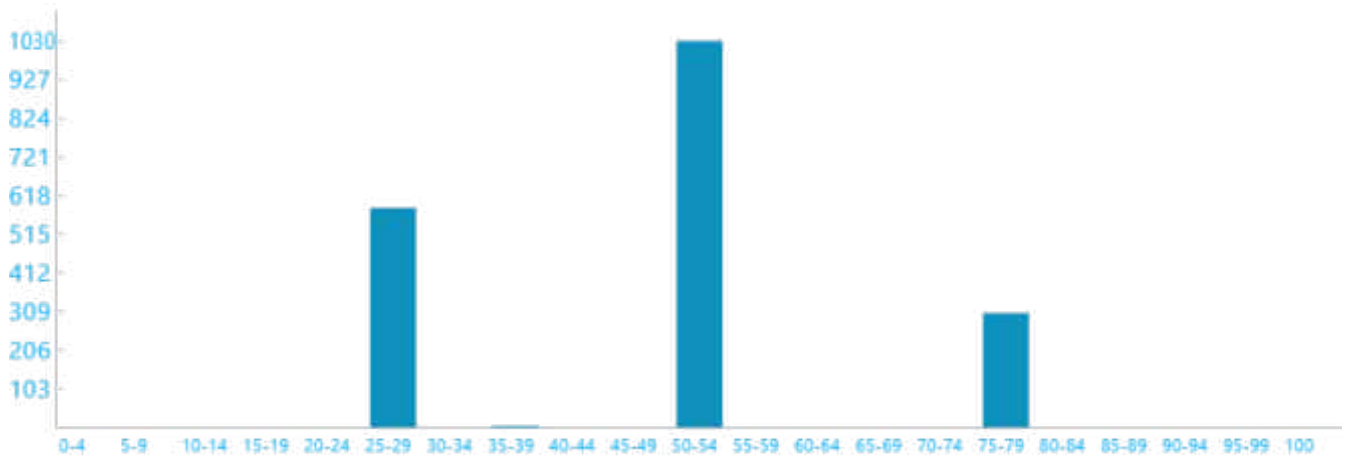
Detailed Session Information

- + Battery Information

- + System Event Log

Screen Brightness Duration Histogram

Duration in seconds at various screen brightness levels



Search Indexer Data

- + Query Events
- + File System Change Events

Srum Data

Data obtained from the SRUM database. * in Power Estimation means the power value is from energy meter. Otherwise, it is from software model estimation.

- + Energy Meter
- + Power Estimation

Top

System Power State: Hibernate

SESSION ID	START TIME	DURATION	STATE	ENTRY REASON	EXIT REASON	% CAPACITY REMAINING AT START
38	2026-02-03 20:13:16	0:48:27	Hibernate	Battery	Unknown	4%

Detailed Session Information

- + Battery Information
- + System Event Log

Srum Data

Data obtained from the SRUM database. * in Power Estimation means the power value is from energy meter. Otherwise, it is from software model estimation.

- + Energy Meter
- + Power Estimation

Top

System Power State: Screen Off

SESSION ID	START TIME	DURATION	STATE	ENTRY REASON	EXIT REASON	% CAPACITY REMAINING AT START
39	2026-02-03 21:01:44	0:00:00	Screen Off	Hibernate, or Shutdown	Resume S4 Display Burst	4%

Detailed Session Information

- + Battery Information
- + General
- + System Event Log

This session contains no detailed information about top offenders.

Top

System Power State: Active

SESSION ID	START TIME	DURATION	STATE	ENTRY REASON	EXIT REASON	% CAPACITY REMAINING AT START
40	2026-02-03 21:02:58	1:08:45	Active	MonitorOn	MonitorOff	4%

Detailed Session Information

- + Battery Information
- + System Event Log

Screen Brightness Duration Histogram

Duration in seconds at various screen brightness levels



Search Indexer Data

- + Query Events
- + File System Change Events

Srum Data

Data obtained from the SRUM database. * in Power Estimation means the power value is from energy meter. Otherwise, it is from software model estimation.

- + Energy Meter
- + Power Estimation

Top

System Power State: Hybrid Shutdown

SESSION ID	START TIME	DURATION	STATE	ENTRY REASON	EXIT REASON	% CAPACITY REMAINING AT START
41	2026-02-03 22:11:45	11:43:41	Hybrid Shutdown	Application API	Unknown	63%

Detailed Session Information

- + Battery Information
- + System Event Log

Srum Data

Data obtained from the SRUM database. * in Power Estimation means the power value is from energy meter. Otherwise, it is from software model estimation.

- + Energy Meter
- + Power Estimation

Top

System Power State: Screen Off

SESSION ID	START TIME	DURATION	STATE	ENTRY REASON	EXIT REASON	% CAPACITY REMAINING AT START
42	2026-02-04 09:55:26	0:00:00	Screen Off	Hibernate, or Shutdown	Lid	63%

Detailed Session Information

- + Battery Information
- + General
- + System Event Log

This session contains no detailed information about top offenders.

Top

System Power State: Active

SESSION ID	START TIME	DURATION	STATE	ENTRY REASON	EXIT REASON	% CAPACITY REMAINING AT START
43	2026-02-04 09:55:26	0:00:00	Active	----	Power Source Changed	63%

Detailed Session Information

- + Battery Information
- + System Event Log

Top

System Power State: Active

SESSION ID	START TIME	DURATION	STATE	ENTRY REASON	EXIT REASON	% CAPACITY REMAINING AT START
44	2026-02-04 09:56:36	0:23:52	Active	SwitchToDC	SwitchToAC	63%

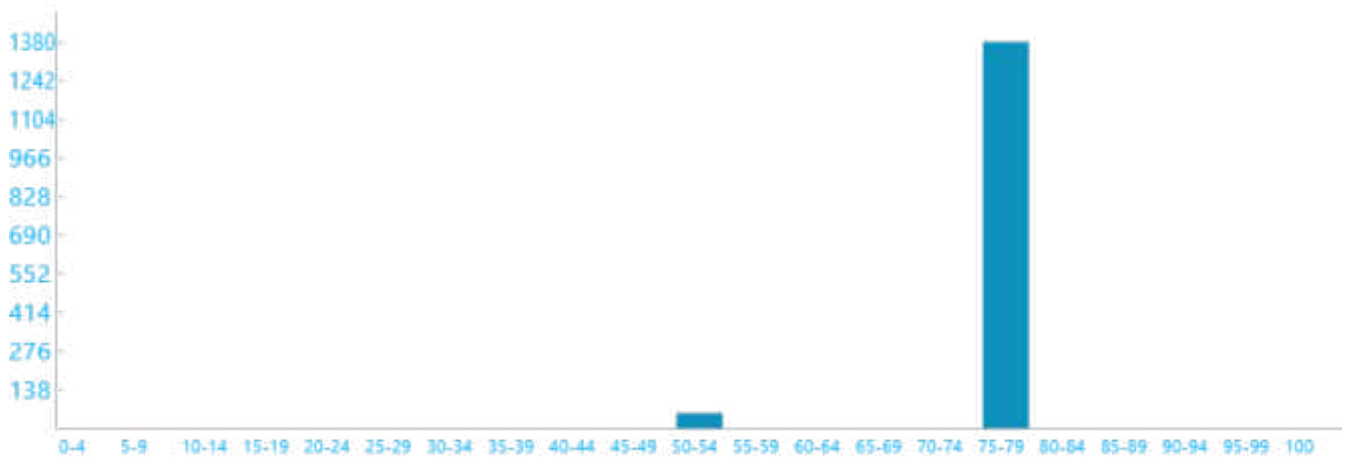
Detailed Session Information

+ Battery Information

+ System Event Log

Screen Brightness Duration Histogram

Duration in seconds at various screen brightness levels



Search Indexer Data

+ Query Events

+ File System Change Events

Srum Data

Data obtained from the SRUM database. * in Power Estimation means the power value is from energy meter. Otherwise, it is from software model estimation.

+ Energy Meter

+ Power Estimation



System Power State: Active

SESSION ID	START TIME	DURATION	STATE	ENTRY REASON	EXIT REASON	% CAPACITY REMAINING AT START
45	2026-02-04 10:20:28	0:00:37	Active	Power Source Changed	Power Source Changed	29%

Detailed Session Information

+ Battery Information

+ System Event Log

Srum Data

Data obtained from the SRUM database. * in Power Estimation means the power value is from energy meter. Otherwise, it is from software model estimation.

+ Energy Meter

+ Power Estimation

Top

System Power State: Active

SESSION ID	START TIME	DURATION	STATE	ENTRY REASON	EXIT REASON	% CAPACITY REMAINING AT START
46	2026-02-04 10:21:05	0:00:03	Active	Power Source Changed	Power Source Changed	29%

Detailed Session Information

- + Battery Information
- + System Event Log

Srum Data

Data obtained from the SRUM database. * in Power Estimation means the power value is from energy meter. Otherwise, it is from software model estimation.

- + Energy Meter
- + Power Estimation

Top

System Power State: Active

SESSION ID	START TIME	DURATION	STATE	ENTRY REASON	EXIT REASON	% CAPACITY REMAINING AT START
47	2026-02-04 10:21:09	0:00:01	Active	Power Source Changed	Power Source Changed	29%

Detailed Session Information

- + Battery Information
- + System Event Log

Srum Data

Data obtained from the SRUM database. * in Power Estimation means the power value is from energy meter. Otherwise, it is from software model estimation.

- + Energy Meter
- + Power Estimation

Top

System Power State: Active

SESSION ID	START TIME	DURATION	STATE	ENTRY REASON	EXIT REASON	% CAPACITY REMAINING AT START
48	2026-02-04 10:21:10	0:00:01	Active	Power Source Changed	Power Source Changed	29%

Detailed Session Information

- + Battery Information
- + System Event Log

Srum Data

Data obtained from the SRUM database. * in Power Estimation means the power value is from energy meter. Otherwise, it is from software model estimation.

+ Energy Meter

+ Power Estimation

Top

System Power State: Active

SESSION ID	START TIME	DURATION	STATE	ENTRY REASON	EXIT REASON	% CAPACITY REMAINING AT START
49	2026-02-04 10:21:12	0:16:46	Active	SwitchToAC	SwitchToDC	29%

Detailed Session Information

+ Battery Information

+ System Event Log

Screen Brightness Duration Histogram

Duration in seconds at various screen brightness levels



Search Indexer Data

+ File System Change Events

Strum Data

Data obtained from the SRUM database. * in Power Estimation means the power value is from energy meter. Otherwise, it is from software model estimation.

+ Energy Meter

+ Power Estimation

Top

System Power State: Active

SESSION ID	START TIME	DURATION	STATE	ENTRY REASON	EXIT REASON	% CAPACITY REMAINING AT START
50	2026-02-04 10:37:58	0:00:04	Active	Power Source Changed	Power Source Changed	42%

Detailed Session Information

+ Battery Information

+ System Event Log

Srum Data

Data obtained from the SRUM database. * in Power Estimation means the power value is from energy meter. Otherwise, it is from software model estimation.

+ Energy Meter

+ Power Estimation

Top

System Power State: Active

SESSION ID	START TIME	DURATION	STATE	ENTRY REASON	EXIT REASON	% CAPACITY REMAINING AT START
51	2026-02-04 10:38:02	0:58:41	Active	SwitchToAC	MonitorOff	42%

Detailed Session Information

+ Battery Information

+ System Event Log

Screen Brightness Duration Histogram

Duration in seconds at various screen brightness levels



Search Indexer Data

+ Query Events

+ File System Change Events

Srum Data

Data obtained from the SRUM database. * in Power Estimation means the power value is from energy meter. Otherwise, it is from software model estimation.

+ Energy Meter

+ Power Estimation

Top

System Power State: Screen Off

SESSION ID	START TIME	DURATION	STATE	ENTRY REASON	EXIT REASON	% CAPACITY REMAINING AT START
52	2026-02-04 11:36:43	0:02:01	Screen Off	Video Idle Timeout	Input Touchpad	90%

Detailed Session Information

- + Battery Information
- + General
- + System Event Log

Strum Data

Data obtained from the SRUM database. * in Power Estimation means the power value is from energy meter. Otherwise, it is from software model estimation.

- + Energy Meter
- + Power Estimation

This session contains no detailed information about top offenders.

Top

System Power State: Active

SESSION ID	START TIME	DURATION	STATE	ENTRY REASON	EXIT REASON	% CAPACITY REMAINING AT START
53	2026-02-04 11:38:45	0:48:09	Active	MonitorOn	MonitorOff	92%

Detailed Session Information

- + Battery Information
- + System Event Log

Screen Brightness Duration Histogram

Duration in seconds at various screen brightness levels



Search Indexer Data

- + File System Change Events

Srum Data

Data obtained from the SRUM database. * in Power Estimation means the power value is from energy meter. Otherwise, it is from software model estimation.

+ Energy Meter

+ Power Estimation

Top

System Power State: Screen Off

SESSION ID	START TIME	DURATION	STATE	ENTRY REASON	EXIT REASON	% CAPACITY REMAINING AT START
54	2026-02-04 12:26:54	0:00:00	Screen Off	Video Idle Timeout	AC/DC Display Burst Suppressed	100%

Detailed Session Information

+ Battery Information

+ General

+ System Event Log

This session contains no detailed information about top offenders.

Top

System Power State: Screen Off

SESSION ID	START TIME	DURATION	STATE	ENTRY REASON	EXIT REASON	% CAPACITY REMAINING AT START
55	2026-02-04 12:26:54	0:00:11	Screen Off	AC/DC Display Burst Suppressed	Transition To Sleep	100%

Detailed Session Information

+ Battery Information

+ General

+ System Event Log

Srum Data

Data obtained from the SRUM database. * in Power Estimation means the power value is from energy meter. Otherwise, it is from software model estimation.

+ Energy Meter

+ Power Estimation

This session contains no detailed information about top offenders.

Top

System Power State: Sleep

SESSION ID	START TIME	DURATION	STATE	ENTRY REASON	EXIT REASON	% CAPACITY REMAINING AT START
56	2026-02-04 12:27:06	0:02:41	Sleep	Transition To Sleep	AC/DC Display Burst	100%

Detailed Session Information

- + Battery Information
- + General
- + System Event Log

Srum Data

Data obtained from the SRUM database. * in Power Estimation means the power value is from energy meter. Otherwise, it is from software model estimation.

- + Energy Meter
- + Power Estimation

This session contains no detailed information about top offenders.

Top

System Power State: Active

SESSION ID	START TIME	DURATION	STATE	ENTRY REASON	EXIT REASON	% CAPACITY REMAINING AT START
57	2026-02-04 12:29:48	0:00:05	Active	----	----	100%

Detailed Session Information

- + Battery Information
- + System Event Log

Srum Data

Data obtained from the SRUM database. * in Power Estimation means the power value is from energy meter. Otherwise, it is from software model estimation.

- + Energy Meter
- + Power Estimation

Top

System Power State: Screen Off

SESSION ID	START TIME	DURATION	STATE	ENTRY REASON	EXIT REASON	% CAPACITY REMAINING AT START
58	2026-02-04 12:29:54	0:00:00	Screen Off	AC/DC Display Burst	Transition To Sleep	100%

Detailed Session Information

- + Battery Information
- + General
- + System Event Log

This session contains no detailed information about top offenders.

Top

System Power State: Sleep

SESSION ID	START TIME	DURATION	STATE	ENTRY REASON	EXIT REASON	% CAPACITY REMAINING AT START
59	2026-02-04 12:29:54	0:00:41	Sleep	Transition To Sleep	Power Button	100%

Detailed Session Information

- + Battery Information
- + General
- + System Event Log

Srum Data

Data obtained from the SRUM database. * in Power Estimation means the power value is from energy meter. Otherwise, it is from software model estimation.

- + Energy Meter
- + Power Estimation

This session contains no detailed information about top offenders.

Top

System Power State: Active

SESSION ID	START TIME	DURATION	STATE	ENTRY REASON	EXIT REASON	% CAPACITY REMAINING AT START
60	2026-02-04 12:30:35	0:00:01	Active	----	----	100%

Detailed Session Information

- + Battery Information
- + System Event Log

Srum Data

Data obtained from the SRUM database. * in Power Estimation means the power value is from energy meter. Otherwise, it is from software model estimation.

- + Energy Meter
- + Power Estimation

Top

System Power State: Screen Off

SESSION ID	START TIME	DURATION	STATE	ENTRY REASON	EXIT REASON	% CAPACITY REMAINING AT START
61	2026-02-04 12:30:37	0:00:00	Screen Off	Power Button	Transition To Sleep	100%

Detailed Session Information

- + Battery Information
- + General

+ System Event Log

This session contains no detailed information about top offenders.

Top

System Power State: Sleep

SESSION ID	START TIME	DURATION	STATE	ENTRY REASON	EXIT REASON	% CAPACITY REMAINING AT START
62	2026-02-04 12:30:37	0:00:08	Sleep	Transition To Sleep	Input Keyboard	100%

Detailed Session Information

+ Battery Information

+ General

+ System Event Log

Srum Data

Data obtained from the SRUM database. * in Power Estimation means the power value is from energy meter. Otherwise, it is from software model estimation.

+ Energy Meter

+ Power Estimation

This session contains no detailed information about top offenders.

Top

System Power State: Active

SESSION ID	START TIME	DURATION	STATE	ENTRY REASON	EXIT REASON	% CAPACITY REMAINING AT START
63	2026-02-04 12:30:45	0:29:26	Active	MonitorOn	SwitchToDC	100%

Detailed Session Information

+ Battery Information

+ System Event Log

Screen Brightness Duration Histogram

Duration in seconds at various screen brightness levels



Search Indexer Data

- + File System Change Events

Srum Data

Data obtained from the SRUM database. * in Power Estimation means the power value is from energy meter. Otherwise, it is from software model estimation.

- + Energy Meter
- + Power Estimation

Top

System Power State: Active

SESSION ID	START TIME	DURATION	STATE	ENTRY REASON	EXIT REASON	% CAPACITY REMAINING AT START
64	2026-02-04 13:00:11	0:01:10	Active	SwitchToDC	SwitchToAC	100%

Detailed Session Information

- + Battery Information
- + System Event Log

Screen Brightness Duration Histogram

Duration in seconds at various screen brightness levels



Search Indexer Data

+ File System Change Events

Srum Data

Data obtained from the SRUM database. * in Power Estimation means the power value is from energy meter. Otherwise, it is from software model estimation.

+ Energy Meter

+ Power Estimation

Top

System Power State: Active

SESSION ID	START TIME	DURATION	STATE	ENTRY REASON	EXIT REASON	% CAPACITY REMAINING AT START
65	2026-02-04 13:01:21	0:16:13	Active	SwitchToAC	MonitorOff	98%

Detailed Session Information

+ Battery Information

+ System Event Log

Screen Brightness Duration Histogram

Duration in seconds at various screen brightness levels



Search Indexer Data

+ File System Change Events

Srum Data

Data obtained from the SRUM database. * in Power Estimation means the power value is from energy meter. Otherwise, it is from software model estimation.

+ Energy Meter

+ Power Estimation

Top

System Power State: Screen Off

SESSION ID	START TIME	DURATION	STATE	ENTRY REASON	EXIT REASON	% CAPACITY REMAINING AT START
66	2026-02-04 13:17:35	0:00:00	Screen Off	Power Button	Transition To Sleep	100%

Detailed Session Information

- + Battery Information
- + General
- + System Event Log

This session contains no detailed information about top offenders.

Top

System Power State: Sleep

SESSION ID	START TIME	DURATION	STATE	ENTRY REASON	EXIT REASON	% CAPACITY REMAINING AT START
67	2026-02-04 13:17:35	0:00:01	Sleep	Transition To Sleep	PDC Task Client: Maintenance Scheduler	100%

Detailed Session Information

- + Battery Information
- + General
- + System Event Log

Srum Data

Data obtained from the SRUM database. * in Power Estimation means the power value is from energy meter. Otherwise, it is from software model estimation.

- + Energy Meter
- + Power Estimation

This session contains no detailed information about top offenders.

Top

System Power State: Screen Off

SESSION ID	START TIME	DURATION	STATE	ENTRY REASON	EXIT REASON	% CAPACITY REMAINING AT START
68	2026-02-04 13:17:36	0:00:00	Screen Off	PDC Task Client: Maintenance Scheduler	SetThreadExecutionState	100%

Detailed Session Information

- + Battery Information
- + General
- + System Event Log

This session contains no detailed information about top offenders.

Top

System Power State: Active

SESSION ID	START TIME	DURATION	STATE	ENTRY REASON	EXIT REASON	% CAPACITY REMAINING AT START
69	2026-02-04 13:17:36	0:02:26	Active	MonitorOn	SwitchToDC	100%

Detailed Session Information

- + Battery Information
- + System Event Log

Screen Brightness Duration Histogram

Duration in seconds at various screen brightness levels



Search Indexer Data

- + Query Events
- + File System Change Events

Srum Data

Data obtained from the SRUM database. * in Power Estimation means the power value is from energy meter. Otherwise, it is from software model estimation.

- + Energy Meter
- + Power Estimation

Top

System Power State: Active

SESSION ID	START TIME	DURATION	STATE	ENTRY REASON	EXIT REASON	% CAPACITY REMAINING AT START
70	2026-02-04 13:20:02	0:00:07	Active	Power Source Changed	Power Source Changed	100%

Detailed Session Information

- + Battery Information

+ System Event Log

Srum Data

Data obtained from the SRUM database. * in Power Estimation means the power value is from energy meter. Otherwise, it is from software model estimation.

+ Energy Meter

+ Power Estimation

Top

System Power State: Active

SESSION ID	START TIME	DURATION	STATE	ENTRY REASON	EXIT REASON	% CAPACITY REMAINING AT START
71	2026-02-04 13:20:09	0:00:03	Active	Power Source Changed	Power Source Changed	98%

Detailed Session Information

+ Battery Information

+ System Event Log

Srum Data

Data obtained from the SRUM database. * in Power Estimation means the power value is from energy meter. Otherwise, it is from software model estimation.

+ Energy Meter

+ Power Estimation

Top

System Power State: Active

SESSION ID	START TIME	DURATION	STATE	ENTRY REASON	EXIT REASON	% CAPACITY REMAINING AT START
72	2026-02-04 13:20:13	0:00:03	Active	Power Source Changed	Power Source Changed	100%

Detailed Session Information

+ Battery Information

+ System Event Log

Srum Data

Data obtained from the SRUM database. * in Power Estimation means the power value is from energy meter. Otherwise, it is from software model estimation.

+ Energy Meter

+ Power Estimation

Top

System Power State: Active

SESSION ID	START TIME	DURATION	STATE	ENTRY REASON	EXIT REASON	% CAPACITY REMAINING AT START
73	2026-02-04 13:20:17	0:00:51	Active	Power Source Changed	Power Source Changed	98%

Detailed Session Information

- + Battery Information
- + System Event Log

Srum Data

Data obtained from the SRUM database. * in Power Estimation means the power value is from energy meter. Otherwise, it is from software model estimation.

- + Energy Meter
- + Power Estimation

Top

System Power State: Active

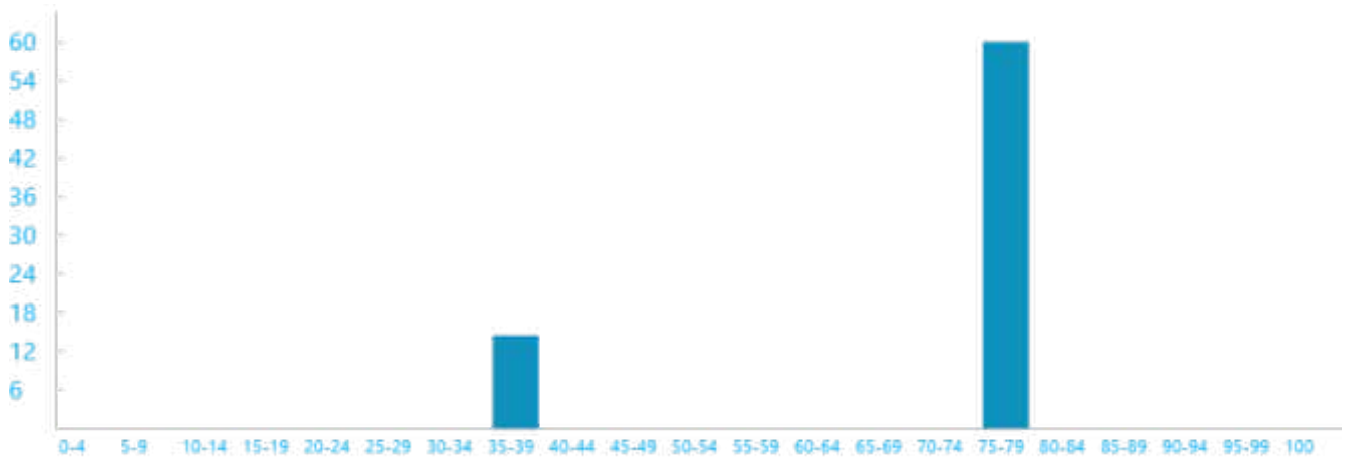
SESSION ID	START TIME	DURATION	STATE	ENTRY REASON	EXIT REASON	% CAPACITY REMAINING AT START
74	2026-02-04 13:21:09	0:01:18	Active	SwitchToDC	MonitorOff	100%

Detailed Session Information

- + Battery Information
- + System Event Log

Screen Brightness Duration Histogram

Duration in seconds at various screen brightness levels



Search Indexer Data

- + File System Change Events

Srum Data

Data obtained from the SRUM database. * in Power Estimation means the power value is from energy meter. Otherwise, it is from software model estimation.

+ Energy Meter

+ Power Estimation

Top

System Power State: Screen Off

SESSION ID	START TIME	DURATION	STATE	ENTRY REASON	EXIT REASON	% CAPACITY REMAINING AT START
75	2026-02-04 13:22:27	0:00:01	Screen Off	Video Idle Timeout	Input Keyboard	98%

Detailed Session Information

+ Battery Information

+ General

+ System Event Log

Srum Data

Data obtained from the SRUM database. * in Power Estimation means the power value is from energy meter. Otherwise, it is from software model estimation.

+ Energy Meter

+ Power Estimation

This session contains no detailed information about top offenders.

Top

System Power State: Active

SESSION ID	START TIME	DURATION	STATE	ENTRY REASON	EXIT REASON	% CAPACITY REMAINING AT START
76	2026-02-04 13:22:29	0:00:08	Active	----	Power Source Changed	98%

Detailed Session Information

+ Battery Information

+ System Event Log

Srum Data

Data obtained from the SRUM database. * in Power Estimation means the power value is from energy meter. Otherwise, it is from software model estimation.

+ Energy Meter

+ Power Estimation

Top

System Power State: Active

SESSION ID	START TIME	DURATION	STATE	ENTRY REASON	EXIT REASON	% CAPACITY REMAINING AT START
77	2026-02-04 13:22:37	0:00:05	Active	Power Source Changed	Power Source Changed	98%

Detailed Session Information

- + Battery Information
- + System Event Log

Srum Data

Data obtained from the SRUM database. * in Power Estimation means the power value is from energy meter. Otherwise, it is from software model estimation.

- + Energy Meter
- + Power Estimation

Top

System Power State: Active

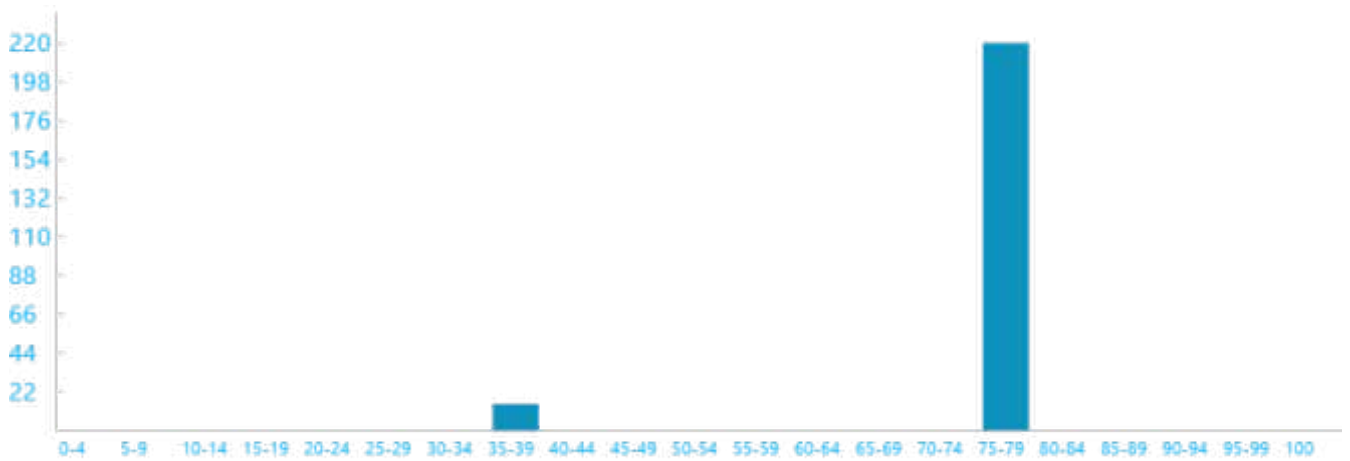
SESSION ID	START TIME	DURATION	STATE	ENTRY REASON	EXIT REASON	% CAPACITY REMAINING AT START
78	2026-02-04 13:22:42	0:03:57	Active	SwitchToDC	MonitorOff	100%

Detailed Session Information

- + Battery Information
- + System Event Log

Screen Brightness Duration Histogram

Duration in seconds at various screen brightness levels



Search Indexer Data

- + Query Events
- + File System Change Events

Srum Data

Data obtained from the SRUM database. * in Power Estimation means the power value is from energy meter. Otherwise, it is from software model estimation.

- + Energy Meter
- + Power Estimation

Top

System Power State: Screen Off

SESSION ID	START TIME	DURATION	STATE	ENERGY CHANGE	CHANGE RATE	% LOW POWER STATE TIME	% CAPACITY REMAINING AT START
79	2026-02-04 13:26:39	0:02:27	Screen Off	106 0% of mWh battery	2,589 mW Drain	-	97%

Detailed Session Information

- + Battery Information
- + General
- + Settings
- + System Event Log

Top Offenders

Top 5 Offenders, ranked by active time

NAME	TYPE	% ACTIVE TIME	ACTIVE TIME
No CS Phase	PDC Phase	100%	0:02:27

Session Blockers

- + Audio Activity
- + PDC Phases

Srum Data

Data obtained from the SRUM database. * in Power Estimation means the power value is from energy meter. Otherwise, it is from software model estimation.

- + Energy Meter
- + Power Estimation

Top

System Power State: Sleep

SESSION ID	START TIME	DURATION	STATE	ENERGY CHANGE	CHANGE RATE	% LOW POWER STATE TIME	% CAPACITY REMAINING AT START
80	2026-02-04 13:29:06	0:17:43	Sleep	502 1% of mWh battery	1,699 mW Drain	SW: 0%	97%

Detailed Session Information

- + Battery Information
- + General
- + MS Exit Latency [ms]
- + Settings
- + System Event Log

DRIPS Histogram

Percent of time spent in DRIPS bucketed by time interval length



Top Offenders

Top 5 Offenders, ranked by active time

NAME	TYPE	% ACTIVE TIME	ACTIVE TIME
USB xHCI Compliant Host Controller (_SB.PC00.TXHC)	Fx Device	98%	0:17:30
USB xHCI Compliant Host Controller (_SB.PC00.XHCI)	Fx Device	98%	0:17:30
Intel(R) PEG60 - 464D (_SB.PC00.PEG0)	Fx Device	5%	0:01:01
Low Power Phase	PDC Phase	0%	0:00:05
Intel(R) Ethernet Connection (16) I219-LM (_SB.PC00.GLAN)	Fx Device	0%	0:00:04

Session Blockers

- + Audio Activity
- + PDC Phases
- + Activators
- + FX Devices
- + Processors
- + PEP Pre-Vetoes
- + SOC Subsystems

Srum Data

Data obtained from the SRUM database. * in Power Estimation means the power value is from energy meter. Otherwise, it is from software model estimation.

- + Energy Meter
- + Power Estimation

Top

System Power State: Active

SESSION ID	START TIME	DURATION	STATE	ENTRY REASON	EXIT REASON	% CAPACITY REMAINING AT START
81	2026-02-04 13:46:45	0:00:58	Active	----	Power Source Changed	96%

Detailed Session Information

- + Battery Information
- + System Event Log

Srum Data

Data obtained from the SRUM database. * in Power Estimation means the power value is from energy meter. Otherwise, it is from software model estimation.

- + Energy Meter
- + Power Estimation

Top

System Power State: Active

SESSION ID	START TIME	DURATION	STATE	ENTRY REASON	EXIT REASON	% CAPACITY REMAINING AT START
82	2026-02-04 13:47:45	1:22:40	Active	SwitchToAC	SwitchToDC	95%

Detailed Session Information

- + Battery Information
- + System Event Log

Screen Brightness Duration Histogram

Duration in seconds at various screen brightness levels



Search Indexer Data

- + Query Events
- + File System Change Events

Srum Data

Data obtained from the SRUM database. * in Power Estimation means the power value is from energy meter. Otherwise, it is from software model estimation.

- + Energy Meter
- + Power Estimation

Top

System Power State: Active

SESSION ID	START TIME	DURATION	STATE	ENTRY REASON	EXIT REASON	% CAPACITY REMAINING AT START
83	2026-02-04 15:10:24	0:00:07	Active	Power Source Changed	Power Source Changed	100%

Detailed Session Information

- + Battery Information
- + System Event Log

Srum Data

Data obtained from the SRUM database. * in Power Estimation means the power value is from energy meter. Otherwise, it is from software model estimation.

- + Energy Meter
- + Power Estimation

Top

System Power State: Active

SESSION ID	START TIME	DURATION	STATE	ENTRY REASON	EXIT REASON	% CAPACITY REMAINING AT START
84	2026-02-04 15:10:32	0:00:06	Active	Power Source Changed	Power Source Changed	95%

Detailed Session Information

- + Battery Information
- + System Event Log

Srum Data

Data obtained from the SRUM database. * in Power Estimation means the power value is from energy meter. Otherwise, it is from software model estimation.

- + Energy Meter
- + Power Estimation

Top

System Power State: Active

SESSION ID	START TIME	DURATION	STATE	ENTRY REASON	EXIT REASON	% CAPACITY REMAINING AT START
85	2026-02-04 15:10:38	0:00:05	Active	Power Source Changed	Power Source Changed	100%

Detailed Session Information

- + Battery Information
- + System Event Log

Srum Data

Data obtained from the SRUM database. * in Power Estimation means the power value is from energy meter. Otherwise, it is from software model estimation.

+ Energy Meter

+ Power Estimation

Top

System Power State: Active

SESSION ID	START TIME	DURATION	STATE	ENTRY REASON	EXIT REASON	% CAPACITY REMAINING AT START
86	2026-02-04 15:10:44	0:00:04	Active	Power Source Changed	Power Source Changed	95%

Detailed Session Information

+ Battery Information

+ System Event Log

Srum Data

Data obtained from the SRUM database. * in Power Estimation means the power value is from energy meter. Otherwise, it is from software model estimation.

+ Energy Meter

+ Power Estimation

Top

System Power State: Active

SESSION ID	START TIME	DURATION	STATE	ENTRY REASON	EXIT REASON	% CAPACITY REMAINING AT START
87	2026-02-04 15:10:48	0:00:03	Active	Power Source Changed	Power Source Changed	100%

Detailed Session Information

+ Battery Information

+ System Event Log

Srum Data

Data obtained from the SRUM database. * in Power Estimation means the power value is from energy meter. Otherwise, it is from software model estimation.

+ Energy Meter

+ Power Estimation

Top

System Power State: Active

SESSION ID	START TIME	DURATION	STATE	ENTRY REASON	EXIT REASON	% CAPACITY REMAINING AT START
88	2026-02-04 15:10:52	0:04:33	Active	SwitchToAC	MonitorOff	95%

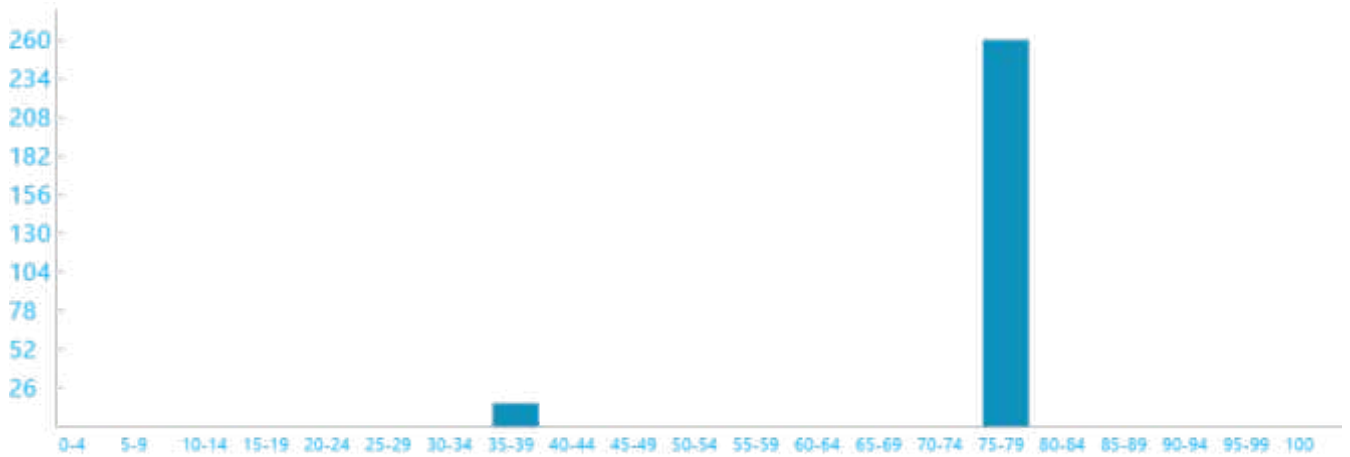
Detailed Session Information

+ Battery Information

+ System Event Log

Screen Brightness Duration Histogram

Duration in seconds at various screen brightness levels



Search Indexer Data

+ File System Change Events

SRUM Data

Data obtained from the SRUM database. * in Power Estimation means the power value is from energy meter. Otherwise, it is from software model estimation.

+ Energy Meter

+ Power Estimation

Top

System Power State: Screen Off

SESSION ID	START TIME	DURATION	STATE	ENERGY CHANGE	CHANGE RATE	% LOW POWER STATE TIME	% CAPACITY REMAINING AT START
89	2026-02-04 15:15:25	0:15:11	Screen Off	- -	- Charge	-	100%

Detailed Session Information

+ Battery Information

+ General

+ Settings

+ System Event Log

Top Offenders

Top 5 Offenders, ranked by active time

NAME	TYPE	% ACTIVE TIME	ACTIVE TIME
No CS Phase	PDC Phase	99%	0:15:11

Session Blockers

+ Audio Activity

+ PDC Phases

Srum Data

Data obtained from the SRUM database. * in Power Estimation means the power value is from energy meter. Otherwise, it is from software model estimation.

+ Energy Meter

+ Power Estimation

Top

System Power State: Sleep

SESSION ID	START TIME	DURATION	STATE	ENERGY CHANGE	CHANGE RATE	% LOW POWER STATE TIME	% CAPACITY REMAINING AT START
90	2026-02-04 15:30:36	0:36:22	Sleep	2,296 5% of mWh battery	3,787 mW Charge	SW: 0%	100%

Detailed Session Information

+ Battery Information

+ General

+ MS Exit Latency [ms]

+ Settings

+ System Event Log

DRIPS Histogram

Percent of time spent in DRIPS bucketed by time interval length



Top Offenders

Top 5 Offenders, ranked by active time

NAME	TYPE	% ACTIVE TIME	ACTIVE TIME
USB xHCI Compliant Host Controller (_SB.PC00.TXHC)	Fx Device	99%	0:36:10
USB xHCI Compliant Host Controller (_SB.PC00.XHCI)	Fx Device	99%	0:36:10
Intel(R) PEG60 - 464D (_SB.PC00.PEG0)	Fx Device	2%	0:00:59
Low Power Phase	PDC Phase	0%	0:00:05
Intel(R) Ethernet Connection (16) I219-LM (_SB.PC00.GLAN)	Fx Device	0%	0:00:04

Session Blockers

- + Audio Activity
- + PDC Phases
- + Activators
- + FX Devices
- + Processors
- + PEP Pre-Vetoes
- + SOC Subsystems

Srum Data

Data obtained from the SRUM database. * in Power Estimation means the power value is from energy meter. Otherwise, it is from software model estimation.

- + Energy Meter
- + Power Estimation

Top

System Power State: Screen Off

SESSION ID	START TIME	DURATION	STATE	ENTRY REASON	EXIT REASON	% CAPACITY REMAINING AT START
91	2026-02-04 16:06:54	0:00:05	Screen Off	AC/DC Display Burst Suppressed	Transition To Sleep	95%

Detailed Session Information

- + Battery Information
- + General
- + System Event Log

Srum Data

Data obtained from the SRUM database. * in Power Estimation means the power value is from energy meter. Otherwise, it is from software model estimation.

- + Energy Meter
- + Power Estimation

This session contains no detailed information about top offenders.

Top

System Power State: Sleep

SESSION ID	START TIME	DURATION	STATE	ENTRY REASON	EXIT REASON	% CAPACITY REMAINING AT START
92	2026-02-04 16:06:59	0:01:14	Sleep	Transition To Sleep	Input Keyboard	95%

Detailed Session Information

- + Battery Information
- + General
- + System Event Log

Srum Data

Data obtained from the SRUM database. * in Power Estimation means the power value is from energy meter. Otherwise, it is from software model estimation.

- + Energy Meter
- + Power Estimation

This session contains no detailed information about top offenders.

Top

System Power State: Active

SESSION ID	START TIME	DURATION	STATE	ENTRY REASON	EXIT REASON	% CAPACITY REMAINING AT START
93	2026-02-04 16:08:13	0:00:44	Active	----	----	95%

Detailed Session Information

- + Battery Information
- + System Event Log

Srum Data

Data obtained from the SRUM database. * in Power Estimation means the power value is from energy meter. Otherwise, it is from software model estimation.

- + Energy Meter
- + Power Estimation

Top

System Power State: Screen Off

SESSION ID	START TIME	DURATION	STATE	ENERGY CHANGE	CHANGE RATE	% LOW POWER STATE TIME	% CAPACITY REMAINING AT START
94	2026-02-04 16:08:58	0:04:38	Screen Off	441 mWh battery	1% of 5,709 mW	Drain	- 95%

Detailed Session Information

- + Battery Information
- + General
- + Settings
- + System Event Log

Top Offenders

Top 5 Offenders, ranked by active time

NAME	TYPE	% ACTIVE TIME	ACTIVE TIME
No CS Phase	PDC Phase	99%	0:04:37

Session Blockers

- + Audio Activity
- + PDC Phases

Srum Data

Data obtained from the SRUM database. * in Power Estimation means the power value is from energy meter. Otherwise, it is from software model estimation.

- + Energy Meter
- + Power Estimation

Top

System Power State: Sleep

SESSION ID	START TIME	DURATION	STATE	ENERGY CHANGE	CHANGE RATE	% LOW POWER STATE TIME	% CAPACITY REMAINING AT START
95	2026-02-04 16:13:36	0:07:02	Sleep	578 1% of mWh battery	4,923 mW Drain	SW: 0%	94%

Detailed Session Information

- + Battery Information
- + General
- + MS Exit Latency [ms]
- + Settings
- + System Event Log

DRIPS Histogram

Percent of time spent in DRIPS bucketed by time interval length



Top Offenders

Top 5 Offenders, ranked by active time

NAME	TYPE	% ACTIVE TIME	ACTIVE TIME
USB xHCI Compliant Host Controller (_SB.PC00.TXHC)	Fx Device	97%	0:06:50
USB xHCI Compliant Host Controller (_SB.PC00.XHCI)	Fx Device	97%	0:06:50
Intel(R) PEG60 - 464D (_SB.PC00.PEG0)	Fx Device	5%	0:00:24
Low Power Phase	PDC Phase	1%	0:00:05
Intel(R) Ethernet Connection (16) I219-LM (_SB.PC00.GLAN)	Fx Device	1%	0:00:04

Session Blockers

- + Audio Activity
- + PDC Phases
- + Activators
- + FX Devices
- + Processors
- + PEP Pre-Vetoes
- + SOC Subsystems

Srum Data

Data obtained from the SRUM database. * in Power Estimation means the power value is from energy meter. Otherwise, it is from software model estimation.

- + Energy Meter
- + Power Estimation

Top

System Power State: Screen Off

SESSION ID	START TIME	DURATION	STATE	ENTRY REASON	EXIT REASON	% CAPACITY REMAINING AT START
96	2026-02-04 16:20:34	0:00:05	Screen Off	Restricted Standby Battery Drain Budget Exceeded	Transition To Sleep	92%

Detailed Session Information

- + Battery Information
- + General
- + System Event Log

Srum Data

Data obtained from the SRUM database. * in Power Estimation means the power value is from energy meter. Otherwise, it is from software model estimation.

- + Energy Meter
- + Power Estimation

This session contains no detailed information about top offenders.

Top

System Power State: Sleep

SESSION ID	START TIME	DURATION	STATE	ENTRY REASON	EXIT REASON	% CAPACITY REMAINING AT START
97	2026-02-04 16:20:39	0:01:42	Sleep	Transition To Sleep	Input Keyboard	92%

Detailed Session Information

- + Battery Information
- + General
- + System Event Log

Srum Data

Data obtained from the SRUM database. * in Power Estimation means the power value is from energy meter. Otherwise, it is from software model estimation.

- + Energy Meter
- + Power Estimation

This session contains no detailed information about top offenders.

Top

System Power State: Active

SESSION ID	START TIME	DURATION	STATE	ENTRY REASON	EXIT REASON	% CAPACITY REMAINING AT START
98	2026-02-04 16:22:22	0:00:14	Active	----	----	92%

Detailed Session Information

- + Battery Information
- + System Event Log

Srum Data

Data obtained from the SRUM database. * in Power Estimation means the power value is from energy meter. Otherwise, it is from software model estimation.

- + Energy Meter
- + Power Estimation

Top

System Power State: Hybrid Shutdown

SESSION ID	START TIME	DURATION	STATE	ENTRY REASON	EXIT REASON	% CAPACITY REMAINING AT START
99	2026-02-04 16:22:36	4:32:36	Hybrid Shutdown	Application API	Unknown	92%

Detailed Session Information

- + Battery Information
- + System Event Log

Srum Data

Data obtained from the SRUM database. * in Power Estimation means the power value is from energy meter. Otherwise, it is from software model estimation.

+ Energy Meter

+ Power Estimation

Top

System Power State: Screen Off

SESSION ID	START TIME	DURATION	STATE	ENTRY REASON	EXIT REASON	% CAPACITY REMAINING AT START
100	2026-02-04 20:55:13	0:00:00	Screen Off	Hibernate, or Shutdown	Lid	92%

Detailed Session Information

+ Battery Information

+ General

+ System Event Log

This session contains no detailed information about top offenders.

Top

System Power State: Active

SESSION ID	START TIME	DURATION	STATE	ENTRY REASON	EXIT REASON	% CAPACITY REMAINING AT START
101	2026-02-04 20:55:13	0:00:36	Active	----	----	92%

Detailed Session Information

+ Battery Information

+ System Event Log

Srum Data

Data obtained from the SRUM database. * in Power Estimation means the power value is from energy meter. Otherwise, it is from software model estimation.

+ Energy Meter

+ Power Estimation

Top

System Power State: Screen Off

SESSION ID	START TIME	DURATION	STATE	ENTRY REASON	EXIT REASON	% CAPACITY REMAINING AT START
102	2026-02-04 20:55:50	0:00:07	Screen Off	Video Idle Timeout	Input Keyboard	91%

Detailed Session Information

+ Battery Information

- + General
- + System Event Log

Srum Data

Data obtained from the SRUM database. * in Power Estimation means the power value is from energy meter. Otherwise, it is from software model estimation.

- + Energy Meter
- + Power Estimation

This session contains no detailed information about top offenders.

Top

System Power State: Active

SESSION ID	START TIME	DURATION	STATE	ENTRY REASON	EXIT REASON	% CAPACITY REMAINING AT START
103	2026-02-04 20:55:57	0:00:42	Active	----	Power Source Changed	91%

Detailed Session Information

- + Battery Information
- + System Event Log

Srum Data

Data obtained from the SRUM database. * in Power Estimation means the power value is from energy meter. Otherwise, it is from software model estimation.

- + Energy Meter
- + Power Estimation

Top

System Power State: Active

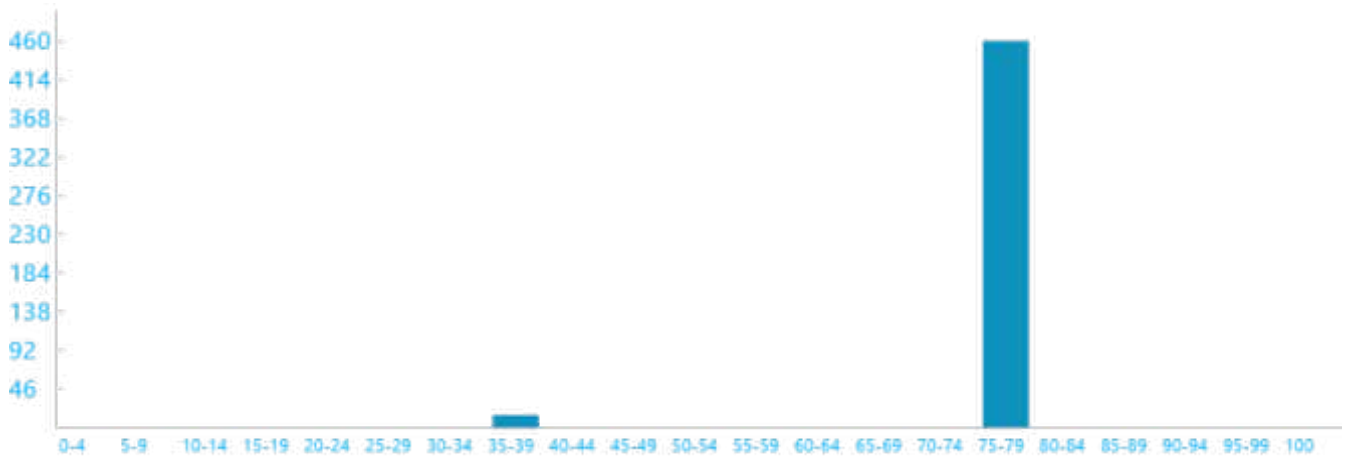
SESSION ID	START TIME	DURATION	STATE	ENTRY REASON	EXIT REASON	% CAPACITY REMAINING AT START
104	2026-02-04 20:57:17	0:07:54	Active	SwitchToAC	MonitorOff	91%

Detailed Session Information

- + Battery Information
- + System Event Log

Screen Brightness Duration Histogram

Duration in seconds at various screen brightness levels



Search Indexer Data

- + Query Events
- + File System Change Events

Srum Data

Data obtained from the SRUM database. * in Power Estimation means the power value is from energy meter. Otherwise, it is from software model estimation.

- + Energy Meter
- + Power Estimation

Top

System Power State: Screen Off

SESSION ID	START TIME	DURATION	STATE	ENTRY REASON	EXIT REASON	% CAPACITY REMAINING AT START
105	2026-02-04 21:05:11	0:04:38	Screen Off	Video Idle Timeout	Input Keyboard	95%

Detailed Session Information

- + Battery Information
- + General
- + System Event Log

Srum Data

Data obtained from the SRUM database. * in Power Estimation means the power value is from energy meter. Otherwise, it is from software model estimation.

- + Energy Meter
- + Power Estimation

This session contains no detailed information about top offenders.

Top

System Power State: Active

SESSION ID	START TIME	DURATION	STATE	ENTRY REASON	EXIT REASON	% CAPACITY REMAINING AT START
106	2026-02-04 21:09:49	0:41:14	Active	MonitorOn	MonitorOff	97%

Detailed Session Information

- + Battery Information
- + System Event Log

Screen Brightness Duration Histogram
Duration in seconds at various screen brightness levels



Search Indexer Data

- + File System Change Events

Srum Data

Data obtained from the SRUM database. * in Power Estimation means the power value is from energy meter. Otherwise, it is from software model estimation.

- + Energy Meter
- + Power Estimation

Top

System Power State: Active

SESSION ID	START TIME	DURATION	STATE	ENTRY REASON	EXIT REASON	% CAPACITY REMAINING AT START
107	2026-02-04 21:51:08	0:00:00	Active	Power Source Changed	----	100%

Detailed Session Information

- + Battery Information
- + System Event Log

Top

System Power State: Hybrid Shutdown

SESSION ID	START TIME	DURATION	STATE	ENTRY REASON	EXIT REASON	% CAPACITY REMAINING AT START
108	2026-02-04 21:51:08	11:39:16	Hybrid Shutdown	Application API	Unknown	100%

Detailed Session Information

- + Battery Information
- + System Event Log

Srum Data

Data obtained from the SRUM database. * in Power Estimation means the power value is from energy meter. Otherwise, it is from software model estimation.

- + Energy Meter
- + Power Estimation

Top

System Power State: Screen Off

SESSION ID	START TIME	DURATION	STATE	ENTRY REASON	EXIT REASON	% CAPACITY REMAINING AT START
109	2026-02-05 09:30:25	0:00:00	Screen Off	Hibernate, or Shutdown	Resume S4 Display Burst	100%

Detailed Session Information

- + Battery Information
- + General
- + System Event Log

This session contains no detailed information about top offenders.

Top

System Power State: Active

SESSION ID	START TIME	DURATION	STATE	ENTRY REASON	EXIT REASON	% CAPACITY REMAINING AT START
110	2026-02-05 09:31:35	0:30:46	Active	MonitorOn	MonitorOff	100%

Detailed Session Information

- + Battery Information
- + System Event Log

Search Indexer Data

- + Query Events
- + File System Change Events

Srum Data

Data obtained from the SRUM database. * in Power Estimation means the power value is from energy meter. Otherwise, it is from software model estimation.

+ Energy Meter

+ Power Estimation

Top

System Power State: Screen Off

SESSION ID	START TIME	DURATION	STATE	ENTRY REASON	EXIT REASON	% CAPACITY REMAINING AT START
111	2026-02-05 10:02:21	0:02:06	Screen Off	Video Idle Timeout	Transition To Sleep	80%

Detailed Session Information

+ Battery Information

+ General

+ System Event Log

Srum Data

Data obtained from the SRUM database. * in Power Estimation means the power value is from energy meter. Otherwise, it is from software model estimation.

+ Energy Meter

+ Power Estimation

This session contains no detailed information about top offenders.

Top

System Power State: Sleep

SESSION ID	START TIME	DURATION	STATE	ENTRY REASON	EXIT REASON	% CAPACITY REMAINING AT START
112	2026-02-05 10:04:27	0:02:41	Sleep	Transition To Sleep	Restricted Standby Battery Drain Budget Exceeded	79%

Detailed Session Information

+ Battery Information

+ General

+ System Event Log

Srum Data

Data obtained from the SRUM database. * in Power Estimation means the power value is from energy meter. Otherwise, it is from software model estimation.

+ Energy Meter

+ Power Estimation

This session contains no detailed information about top offenders.

Top

System Power State: Screen Off

SESSION ID	START TIME	DURATION	STATE	ENTRY REASON	EXIT REASON	% CAPACITY REMAINING AT START
113	2026-02-05 10:07:08	0:00:05	Screen Off	Restricted Standby Battery Drain Budget Exceeded	Transition To Sleep	78%

Detailed Session Information

- + Battery Information
- + General
- + System Event Log

Srum Data

Data obtained from the SRUM database. * in Power Estimation means the power value is from energy meter. Otherwise, it is from software model estimation.

- + Energy Meter
- + Power Estimation

This session contains no detailed information about top offenders.

Top

System Power State: Sleep

SESSION ID	START TIME	DURATION	STATE	ENTRY REASON	EXIT REASON	% CAPACITY REMAINING AT START
114	2026-02-05 10:07:13	0:01:01	Sleep	Transition To Sleep	Input Keyboard	78%

Detailed Session Information

- + Battery Information
- + General
- + System Event Log

Srum Data

Data obtained from the SRUM database. * in Power Estimation means the power value is from energy meter. Otherwise, it is from software model estimation.

- + Energy Meter
- + Power Estimation

This session contains no detailed information about top offenders.

Top

System Power State: Active

SESSION ID	START TIME	DURATION	STATE	ENTRY REASON	EXIT REASON	% CAPACITY REMAINING AT START
115	2026-02-05 10:09:24	0:09:02	Active	MonitorOn	MonitorOff	78%

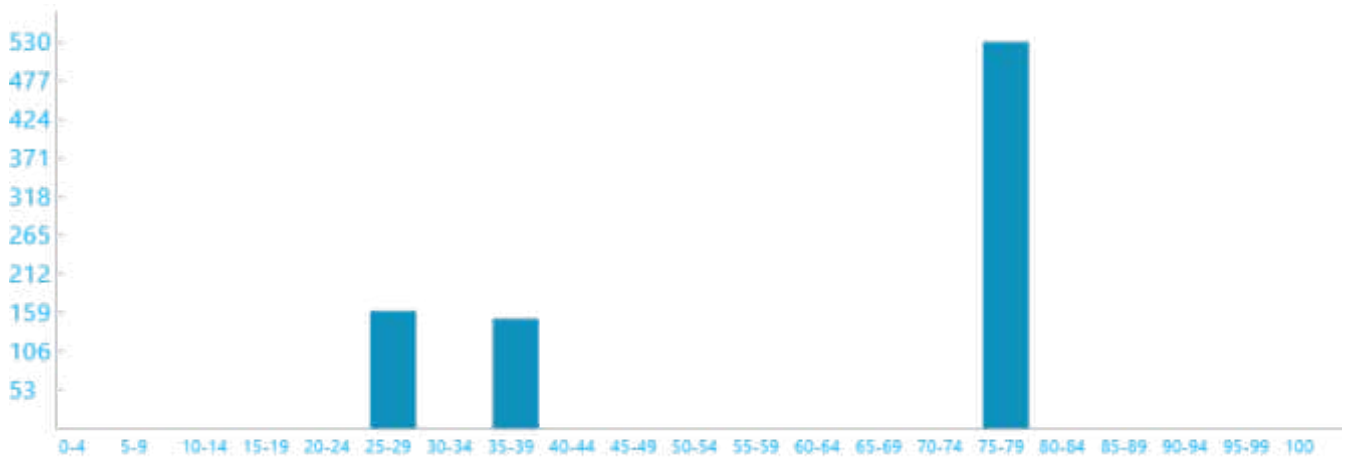
Detailed Session Information

+ Battery Information

+ System Event Log

Screen Brightness Duration Histogram

Duration in seconds at various screen brightness levels



Search Indexer Data

+ File System Change Events

Srum Data

Data obtained from the SRUM database. * in Power Estimation means the power value is from energy meter. Otherwise, it is from software model estimation.

+ Energy Meter

+ Power Estimation

Top

System Power State: Screen Off

SESSION ID	START TIME	DURATION	STATE	ENTRY REASON	EXIT REASON	% CAPACITY REMAINING AT START
116	2026-02-05 10:18:27	0:00:59	Screen Off	Video Idle Timeout	Input Touchpad	73%

Detailed Session Information

+ Battery Information

+ General

+ System Event Log

Srum Data

Data obtained from the SRUM database. * in Power Estimation means the power value is from energy meter. Otherwise, it is from software model estimation.

+ Energy Meter

+ Power Estimation

This session contains no detailed information about top offenders.

Top

System Power State: Active

SESSION ID	START TIME	DURATION	STATE	ENTRY REASON	EXIT REASON	% CAPACITY REMAINING AT START
117	2026-02-05 10:19:26	0:48:19	Active	MonitorOn	SwitchToAC	72%

Detailed Session Information

- + Battery Information
- + System Event Log

Screen Brightness Duration Histogram

Duration in seconds at various screen brightness levels



Search Indexer Data

- + Query Events
- + File System Change Events

Srum Data

Data obtained from the SRUM database. * in Power Estimation means the power value is from energy meter. Otherwise, it is from software model estimation.

- + Energy Meter
- + Power Estimation

Top

System Power State: Active

SESSION ID	START TIME	DURATION	STATE	ENTRY REASON	EXIT REASON	% CAPACITY REMAINING AT START
118	2026-02-05 11:07:46	1:17:49	Active	SwitchToAC	MonitorOff	34%

Detailed Session Information

- + Battery Information

+ System Event Log

Screen Brightness Duration Histogram

Duration in seconds at various screen brightness levels



Search Indexer Data

+ Query Events

+ File System Change Events

Srum Data

Data obtained from the SRUM database. * in Power Estimation means the power value is from energy meter. Otherwise, it is from software model estimation.

+ Energy Meter

+ Power Estimation

Top

System Power State: Hybrid Shutdown

SESSION ID	START TIME	DURATION	STATE	ENTRY REASON	EXIT REASON	% CAPACITY REMAINING AT START
119	2026-02-05 12:25:37	3:01:14	Hybrid Shutdown	Application API	Unknown	100%

Detailed Session Information

+ Battery Information

+ System Event Log

Srum Data

Data obtained from the SRUM database. * in Power Estimation means the power value is from energy meter. Otherwise, it is from software model estimation.

+ Energy Meter

+ Power Estimation

Top

System Power State: Screen Off

SESSION ID	START TIME	DURATION	STATE	ENTRY REASON	EXIT REASON	% CAPACITY REMAINING AT START
120	2026-02-05 15:26:52	0:00:00	Screen Off	Hibernate, or Shutdown	Resume S4 Display Burst	100%

Detailed Session Information

- + Battery Information
- + General
- + System Event Log

This session contains no detailed information about top offenders.

Top

System Power State: Active

SESSION ID	START TIME	DURATION	STATE	ENTRY REASON	EXIT REASON	% CAPACITY REMAINING AT START
121	2026-02-05 15:26:52	0:00:00	Active	----	Power Source Changed	100%

Detailed Session Information

- + Battery Information
- + System Event Log

Top

System Power State: Active

SESSION ID	START TIME	DURATION	STATE	ENTRY REASON	EXIT REASON	% CAPACITY REMAINING AT START
122	2026-02-05 15:26:52	0:00:22	Active	Power Source Changed	Power Source Changed	100%

Detailed Session Information

- + Battery Information
- + System Event Log

Srum Data

Data obtained from the SRUM database. * in Power Estimation means the power value is from energy meter. Otherwise, it is from software model estimation.

- + Energy Meter
- + Power Estimation

Top

System Power State: Active

SESSION ID	START TIME	DURATION	STATE	ENTRY REASON	EXIT REASON	% CAPACITY REMAINING AT START
123	2026-02-05 15:28:02	0:01:09	Active	SwitchToAC	SwitchToDC	99%

Detailed Session Information

+ Battery Information

+ System Event Log

Screen Brightness Duration Histogram

Duration in seconds at various screen brightness levels



Search Indexer Data

+ File System Change Events

Srum Data

Data obtained from the SRUM database. * in Power Estimation means the power value is from energy meter. Otherwise, it is from software model estimation.

+ Energy Meter

+ Power Estimation

Top

System Power State: Active

SESSION ID	START TIME	DURATION	STATE	ENTRY REASON	EXIT REASON	% CAPACITY REMAINING AT START
124	2026-02-05 15:29:11	0:00:02	Active	Power Source Changed	Power Source Changed	100%

Detailed Session Information

+ Battery Information

+ System Event Log

Srum Data

Data obtained from the SRUM database. * in Power Estimation means the power value is from energy meter. Otherwise, it is from software model estimation.

+ Energy Meter

+ Power Estimation

Top

System Power State: Active

SESSION ID	START TIME	DURATION	STATE	ENTRY REASON	EXIT REASON	% CAPACITY REMAINING AT START
125	2026-02-05 15:29:13	0:54:17	Active	SwitchToAC	SwitchToDC	99%

Detailed Session Information

- + Battery Information
- + System Event Log

Screen Brightness Duration Histogram
 Duration in seconds at various screen brightness levels



Search Indexer Data

- + Query Events
- + File System Change Events

Srum Data

Data obtained from the SRUM database. * in Power Estimation means the power value is from energy meter. Otherwise, it is from software model estimation.

- + Energy Meter
- + Power Estimation

Top

System Power State: Active

SESSION ID	START TIME	DURATION	STATE	ENTRY REASON	EXIT REASON	% CAPACITY REMAINING AT START
126	2026-02-05 16:23:31	0:18:23	Active	SwitchToDC	SwitchToAC	100%

Detailed Session Information

- + Battery Information
- + System Event Log

Screen Brightness Duration Histogram
 Duration in seconds at various screen brightness levels



Search Indexer Data

- + Query Events
- + File System Change Events

Srum Data

Data obtained from the SRUM database. * in Power Estimation means the power value is from energy meter. Otherwise, it is from software model estimation.

- + Energy Meter
- + Power Estimation

Top

System Power State: Active

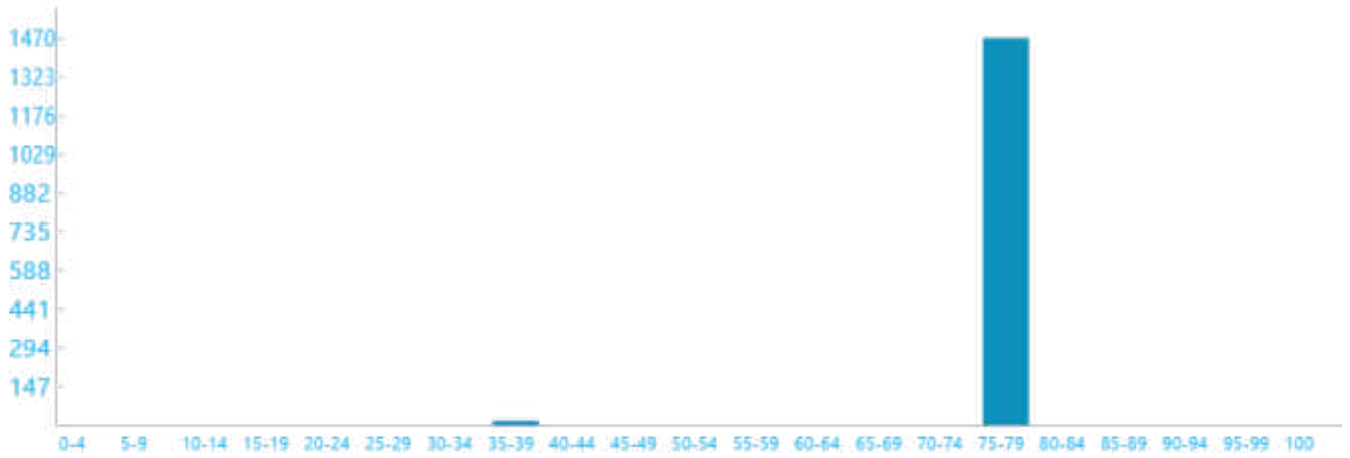
SESSION ID	START TIME	DURATION	STATE	ENTRY REASON	EXIT REASON	% CAPACITY REMAINING AT START
127	2026-02-05 16:41:54	0:24:41	Active	SwitchToAC	MonitorOff	75%

Detailed Session Information

- + Battery Information
- + System Event Log

Screen Brightness Duration Histogram

Duration in seconds at various screen brightness levels



Search Indexer Data

- + File System Change Events

Srum Data

Data obtained from the SRUM database. * in Power Estimation means the power value is from energy meter. Otherwise, it is from software model estimation.

- + Energy Meter
- + Power Estimation

Top

System Power State: Screen Off

SESSION ID	START TIME	DURATION	STATE	ENTRY REASON	EXIT REASON	% CAPACITY REMAINING AT START
128	2026-02-05 17:06:35	0:07:20	Screen Off	Video Idle Timeout	Input Keyboard	94%

Detailed Session Information

- + Battery Information
- + General
- + System Event Log

Srum Data

Data obtained from the SRUM database. * in Power Estimation means the power value is from energy meter. Otherwise, it is from software model estimation.

- + Energy Meter
- + Power Estimation

This session contains no detailed information about top offenders.

Top

System Power State: Active

SESSION ID	START TIME	DURATION	STATE	ENTRY REASON	EXIT REASON	% CAPACITY REMAINING AT START
129	2026-02-05 17:13:56	0:00:13	Active	----	Power Source Changed	97%

Detailed Session Information

- + Battery Information
- + System Event Log

Srum Data

Data obtained from the SRUM database. * in Power Estimation means the power value is from energy meter. Otherwise, it is from software model estimation.

- + Energy Meter
- + Power Estimation

Top

System Power State: Active

SESSION ID	START TIME	DURATION	STATE	ENTRY REASON	EXIT REASON	% CAPACITY REMAINING AT START
130	2026-02-05 17:14:11	0:01:01	Active	Power Source Changed	----	97%

Detailed Session Information

- + Battery Information
- + System Event Log

Srum Data

Data obtained from the SRUM database. * in Power Estimation means the power value is from energy meter. Otherwise, it is from software model estimation.

- + Energy Meter
- + Power Estimation

Top

System Power State: Hibernate

SESSION ID	START TIME	DURATION	STATE	ENTRY REASON	EXIT REASON	% CAPACITY REMAINING AT START
131	2026-02-05 17:15:14	17:22:38	Hibernate	Button or Lid	Unknown	96%

Detailed Session Information

- + Battery Information
- + System Event Log

Srum Data

Data obtained from the SRUM database. * in Power Estimation means the power value is from energy meter. Otherwise, it is from software model estimation.

- + Energy Meter
- + Power Estimation

Top

System Power State: Screen Off

SESSION ID	START TIME	DURATION	STATE	ENTRY REASON	EXIT REASON	% CAPACITY REMAINING AT START
132	2026-02-06 10:37:52	0:00:00	Screen Off	Hibernate, or Shutdown	Lid	96%

Detailed Session Information

- + Battery Information
- + General
- + System Event Log

This session contains no detailed information about top offenders.

Top

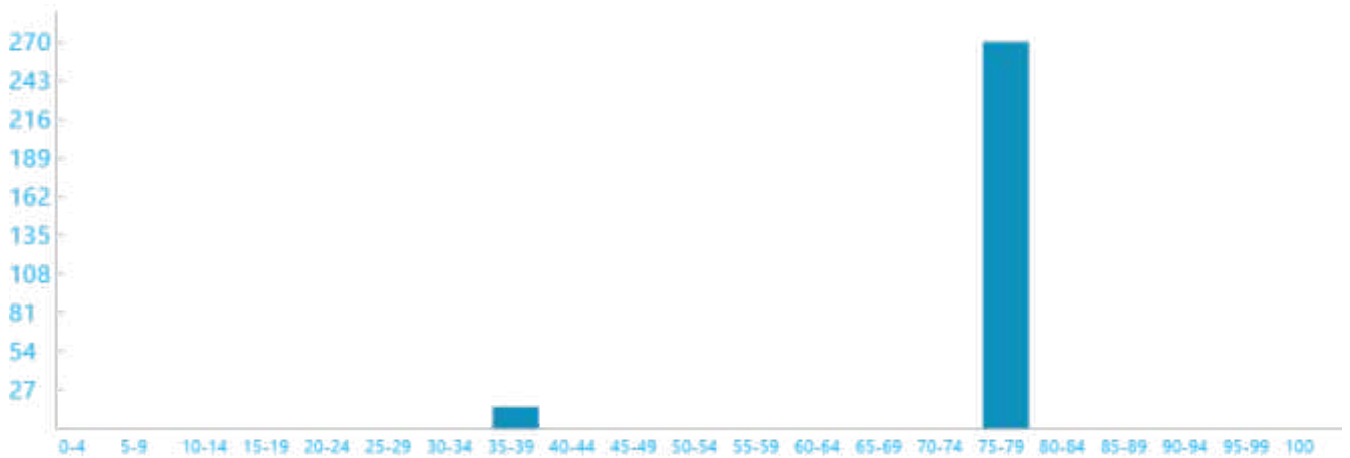
System Power State: Active

SESSION ID	START TIME	DURATION	STATE	ENTRY REASON	EXIT REASON	% CAPACITY REMAINING AT START
133	2026-02-06 10:39:03	0:04:42	Active	MonitorOn	MonitorOff	96%

Detailed Session Information

- + Battery Information
- + System Event Log

Screen Brightness Duration Histogram
Duration in seconds at various screen brightness levels



Search Indexer Data

- + Query Events
- + File System Change Events

Srum Data

Data obtained from the SRUM database. * in Power Estimation means the power value is from energy meter. Otherwise, it is from software model estimation.

- + Energy Meter

+ Power Estimation

Top

System Power State: Screen Off

SESSION ID	START TIME	DURATION	STATE	ENTRY REASON	EXIT REASON	% CAPACITY REMAINING AT START
134	2026-02-06 10:43:45	0:00:04	Screen Off	Video Idle Timeout	Input Keyboard	94%

Detailed Session Information

- + Battery Information
- + General
- + System Event Log

Strum Data

Data obtained from the SRUM database. * in Power Estimation means the power value is from energy meter. Otherwise, it is from software model estimation.

- + Energy Meter
- + Power Estimation

This session contains no detailed information about top offenders.

Top

System Power State: Active

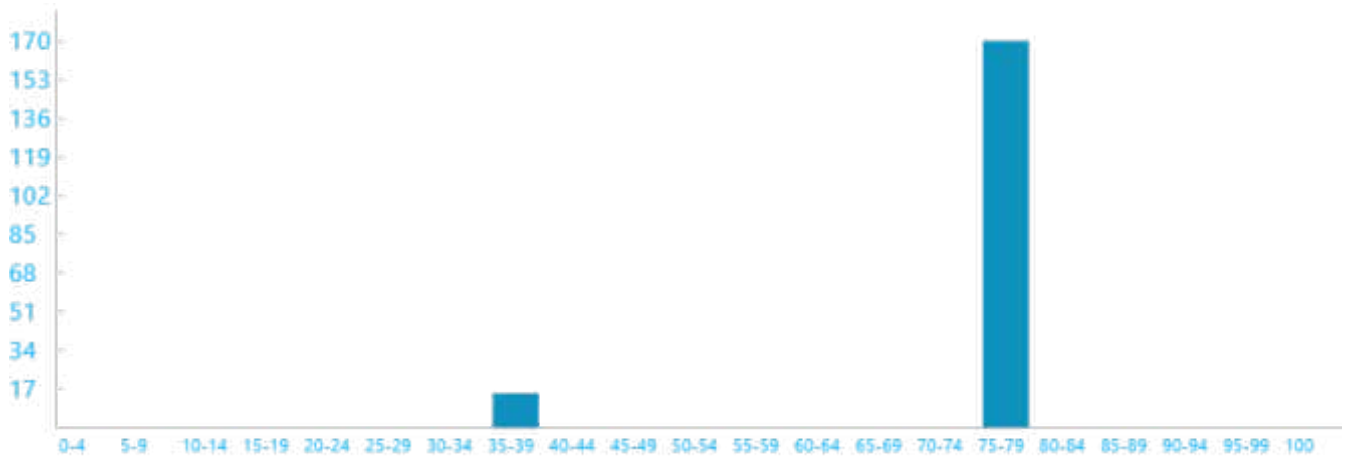
SESSION ID	START TIME	DURATION	STATE	ENTRY REASON	EXIT REASON	% CAPACITY REMAINING AT START
135	2026-02-06 10:43:49	0:03:04	Active	MonitorOn	MonitorOff	94%

Detailed Session Information

- + Battery Information
- + System Event Log

Screen Brightness Duration Histogram

Duration in seconds at various screen brightness levels



Search Indexer Data

- + File System Change Events

Srum Data

Data obtained from the SRUM database. * in Power Estimation means the power value is from energy meter. Otherwise, it is from software model estimation.

- + Energy Meter
- + Power Estimation

Top

System Power State: Screen Off

SESSION ID	START TIME	DURATION	STATE	ENTRY REASON	EXIT REASON	% CAPACITY REMAINING AT START
136	2026-02-06 10:46:53	0:00:40	Screen Off	Video Idle Timeout	Input Touchpad	93%

Detailed Session Information

- + Battery Information
- + General
- + System Event Log

Srum Data

Data obtained from the SRUM database. * in Power Estimation means the power value is from energy meter. Otherwise, it is from software model estimation.

- + Energy Meter
- + Power Estimation

This session contains no detailed information about top offenders.

Top

System Power State: Active

SESSION ID	START TIME	DURATION	STATE	ENTRY REASON	EXIT REASON	% CAPACITY REMAINING AT START
137	2026-02-06 10:47:34	0:03:27	Active	MonitorOn	CompositeBatteryChanged	93%

Detailed Session Information

- + Battery Information
- + System Event Log

Search Indexer Data

- + Query Events
- + File System Change Events

Srum Data

Data obtained from the SRUM database. * in Power Estimation means the power value is from energy meter. Otherwise, it is from software model estimation.

+ Energy Meter

+ Power Estimation

Top

System Power State: Active

SESSION ID	START TIME	DURATION	STATE	ENTRY REASON	EXIT REASON	% CAPACITY REMAINING AT START
138	2026-02-06 10:51:01	0:00:00	Active	Power Source Changed	Battery Count Changed	92%

Detailed Session Information

+ Battery Information

+ System Event Log

Top

System Power State: Active

SESSION ID	START TIME	DURATION	STATE	ENTRY REASON	EXIT REASON	% CAPACITY REMAINING AT START
139	2026-02-06 10:51:01	0:00:06	Active	Battery Count Changed	Power Source Changed	-

Detailed Session Information

+ Battery Information

+ System Event Log

Srum Data

Data obtained from the SRUM database. * in Power Estimation means the power value is from energy meter. Otherwise, it is from software model estimation.

+ Energy Meter

+ Power Estimation

Top

System Power State: Active

SESSION ID	START TIME	DURATION	STATE	ENTRY REASON	EXIT REASON	% CAPACITY REMAINING AT START
140	2026-02-06 10:51:07	0:00:00	Active	Power Source Changed	Battery Count Changed	-

Detailed Session Information

+ Battery Information

+ System Event Log

Top

System Power State: Active

SESSION ID	START TIME	DURATION	STATE	ENTRY REASON	EXIT REASON	% CAPACITY REMAINING AT START
141	2026-02-06 10:51:07	0:00:17	Active	Battery Count Changed	Power Source Changed	-

Detailed Session Information

- + Battery Information
- + System Event Log

Srum Data

Data obtained from the SRUM database. * in Power Estimation means the power value is from energy meter. Otherwise, it is from software model estimation.

- + Energy Meter
- + Power Estimation

Top

System Power State: Active

SESSION ID	START TIME	DURATION	STATE	ENTRY REASON	EXIT REASON	% CAPACITY REMAINING AT START
142	2026-02-06 10:51:24	0:00:00	Active	Power Source Changed	Battery Count Changed	92%

Detailed Session Information

- + Battery Information
- + System Event Log

Top

System Power State: Active

SESSION ID	START TIME	DURATION	STATE	ENTRY REASON	EXIT REASON	% CAPACITY REMAINING AT START
143	2026-02-06 10:51:24	0:00:55	Active	Battery Count Changed	Power Source Changed	-

Detailed Session Information

- + Battery Information
- + System Event Log

Srum Data

Data obtained from the SRUM database. * in Power Estimation means the power value is from energy meter. Otherwise, it is from software model estimation.

- + Energy Meter
- + Power Estimation

Top

System Power State: Active

SESSION ID	START TIME	DURATION	STATE	ENTRY REASON	EXIT REASON	% CAPACITY REMAINING AT START
144	2026-02-06 10:52:19	0:00:00	Active	Power Source Changed	Battery Count Changed	-

Detailed Session Information

- + Battery Information
- + System Event Log

Top

System Power State: Active

SESSION ID	START TIME	DURATION	STATE	ENTRY REASON	EXIT REASON	% CAPACITY REMAINING AT START
145	2026-02-06 10:52:19	0:00:01	Active	Battery Count Changed	Unknown	-

Detailed Session Information

- + Battery Information
- + System Event Log

Srum Data

Data obtained from the SRUM database. * in Power Estimation means the power value is from energy meter. Otherwise, it is from software model estimation.

- + Energy Meter
- + Power Estimation

Top

System Power State: Shutdown

SESSION ID	START TIME	DURATION	STATE	ENTRY REASON	EXIT REASON	% CAPACITY REMAINING AT START
146	2026-02-06 10:52:21	0:00:17	Shutdown	----	----	92%

Detailed Session Information

- + Battery Information
- + System Event Log

Srum Data

Data obtained from the SRUM database. * in Power Estimation means the power value is from energy meter. Otherwise, it is from software model estimation.

- + Energy Meter
- + Power Estimation

Top

System Power State: Active

SESSION ID	START TIME	DURATION	STATE	ENTRY REASON	EXIT REASON	% CAPACITY REMAINING AT START
147	2026-02-06 10:52:38	0:00:51	Active	----	----	56%

Detailed Session Information

- + Battery Information
- + System Event Log

Srum Data

Data obtained from the SRUM database. * in Power Estimation means the power value is from energy meter. Otherwise, it is from software model estimation.

- + Energy Meter
- + Power Estimation

Top

System Power State: Screen Off

SESSION ID	START TIME	DURATION	STATE	ENTRY REASON	EXIT REASON	% CAPACITY REMAINING AT START
148	2026-02-06 10:53:30	0:00:29	Screen Off	Video Idle Timeout	Input Keyboard	91%

Detailed Session Information

- + Battery Information
- + General
- + System Event Log

Srum Data

Data obtained from the SRUM database. * in Power Estimation means the power value is from energy meter. Otherwise, it is from software model estimation.

- + Energy Meter
- + Power Estimation

This session contains no detailed information about top offenders.

Top

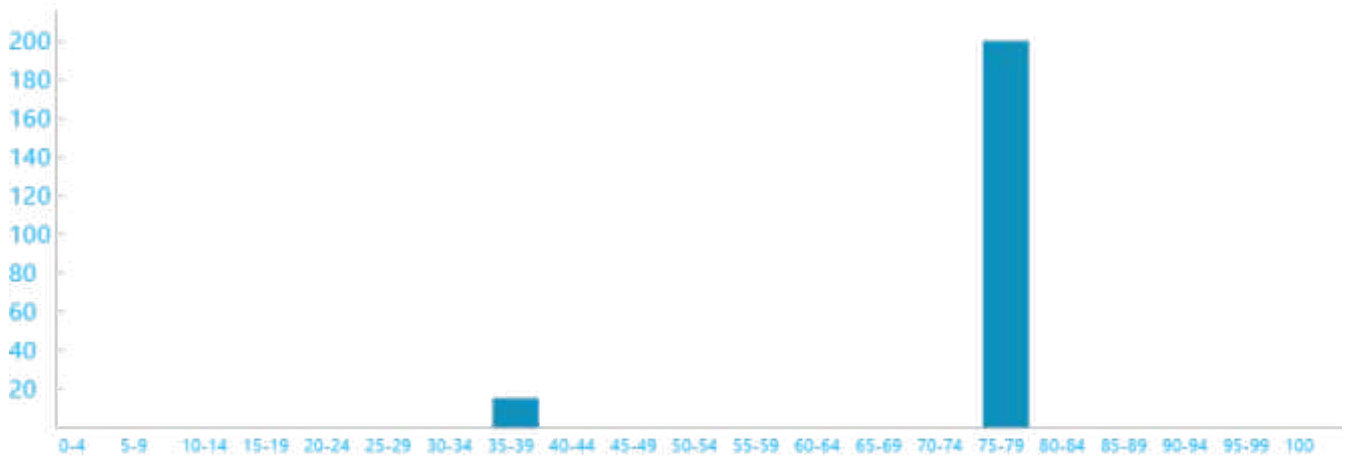
System Power State: Active

SESSION ID	START TIME	DURATION	STATE	ENTRY REASON	EXIT REASON	% CAPACITY REMAINING AT START
149	2026-02-06 10:54:00	0:03:31	Active	MonitorOn	MonitorOff	91%

Detailed Session Information

- + Battery Information
- + System Event Log

Screen Brightness Duration Histogram
Duration in seconds at various screen brightness levels



Search Indexer Data

- + File System Change Events

Srum Data

Data obtained from the SRUM database. * in Power Estimation means the power value is from energy meter. Otherwise, it is from software model estimation.

- + Energy Meter
- + Power Estimation

Top

System Power State: Screen Off

SESSION ID	START TIME	DURATION	STATE	ENERGY CHANGE	CHANGE RATE	% LOW POWER STATE TIME	% CAPACITY REMAINING AT START
150	2026-02-06 10:57:31	0:02:09	Screen Off	106 0% of mWh battery	2,941 mW Drain	-	90%

Detailed Session Information

- + Battery Information
- + General
- + Settings
- + System Event Log

Top Offenders

Top 5 Offenders, ranked by active time

NAME	TYPE	% ACTIVE TIME	ACTIVE TIME
No CS Phase	PDC Phase	99%	0:02:09

Session Blockers

- + Audio Activity

+ PDC Phases

Srum Data

Data obtained from the SRUM database. * in Power Estimation means the power value is from energy meter. Otherwise, it is from software model estimation.

+ Energy Meter

+ Power Estimation

Top

System Power State: Sleep

SESSION ID	START TIME	DURATION	STATE	ENERGY CHANGE	CHANGE RATE	% LOW POWER STATE TIME	% CAPACITY REMAINING AT START
151	2026-02-06 10:59:41	0:18:47	Sleep	396 1% of mWh battery	1,265 mW Drain	SW: 0%	89%

Detailed Session Information

+ Battery Information

+ General

+ MS Exit Latency [ms]

+ Settings

+ System Event Log

DRIPS Histogram

Percent of time spent in DRIPS bucketed by time interval length



Top Offenders

Top 5 Offenders, ranked by active time

NAME	TYPE	% ACTIVE TIME	ACTIVE TIME
USB xHCI Compliant Host Controller (_SB.PC00.XHCI)	Fx Device	98%	0:18:34
USB xHCI Compliant Host Controller (_SB.PC00.TXHC)	Fx Device	98%	0:18:34
Intel(R) PEG60 - 464D (_SB.PC00.PEG0)	Fx Device	6%	0:01:17
Low Power Phase	PDC Phase	0%	0:00:05
Intel(R) Ethernet Connection (16) I219-LM (_SB.PC00.GLAN)	Fx Device	0%	0:00:04

Session Blockers

- + Audio Activity
- + PDC Phases
- + Activators
- + FX Devices
- + Processors
- + PEP Pre-Vetoes
- + SOC Subsystems

Srum Data

Data obtained from the SRUM database. * in Power Estimation means the power value is from energy meter. Otherwise, it is from software model estimation.

- + Energy Meter
- + Power Estimation

Top

System Power State: Screen Off

SESSION ID	START TIME	DURATION	STATE	ENTRY REASON	EXIT REASON	% CAPACITY REMAINING AT START
152	2026-02-06 11:18:23	0:00:05	Screen Off	Restricted Standby Battery Drain Budget Exceeded	Transition To Sleep	88%

Detailed Session Information

- + Battery Information
- + General
- + System Event Log

Srum Data

Data obtained from the SRUM database. * in Power Estimation means the power value is from energy meter. Otherwise, it is from software model estimation.

- + Energy Meter
- + Power Estimation

This session contains no detailed information about top offenders.

Top

System Power State: Sleep

SESSION ID	START TIME	DURATION	STATE	ENERGY CHANGE	CHANGE RATE	% LOW POWER STATE TIME	% CAPACITY REMAINING AT START
153	2026-02-06 11:18:33	0:19:57	Sleep	364 1% of mWh battery	1,094 mW Drain	SW: 0%	88%

Detailed Session Information

- + Battery Information
- + General
- + MS Exit Latency [ms]
- + Settings
- + System Event Log

DRIPS Histogram

Percent of time spent in DRIPS bucketed by time interval length



Top Offenders

Top 5 Offenders, ranked by active time

NAME	TYPE	% ACTIVE TIME	ACTIVE TIME
USB xHCI Compliant Host Controller (_SB.PC00.XHCI)	Fx Device	98%	0:19:44
USB xHCI Compliant Host Controller (_SB.PC00.TXHC)	Fx Device	98%	0:19:44
Intel(R) PEG60 - 464D (_SB.PC00.PEG0)	Fx Device	0%	0:00:08
Intel Smart Sound Technology BUS (_SB.PC00.HDAS)	Fx Device	0%	0:00:05
Low Power Phase	PDC Phase	0%	0:00:05

Session Blockers

- + Audio Activity
- + PDC Phases
- + Activators
- + FX Devices
- + Processors
- + PEP Pre-Vetoes
- + SOC Subsystems

Srum Data

Data obtained from the SRUM database. * in Power Estimation means the power value is from energy meter. Otherwise, it is from software model estimation.

+ Energy Meter

+ Power Estimation

Top

System Power State: Active

SESSION ID	START TIME	DURATION	STATE	ENTRY REASON	EXIT REASON	% CAPACITY REMAINING AT START
154	2026-02-06 11:38:21	0:02:03	Active	----	Power Source Changed	88%

Detailed Session Information

+ Battery Information

+ System Event Log

SRUM Data

Data obtained from the SRUM database. * in Power Estimation means the power value is from energy meter. Otherwise, it is from software model estimation.

+ Energy Meter

+ Power Estimation

Top

System Power State: Active

SESSION ID	START TIME	DURATION	STATE	ENTRY REASON	EXIT REASON	% CAPACITY REMAINING AT START
155	2026-02-06 11:40:25	0:21:58	Active	SwitchToAC	SwitchToDC	87%

Detailed Session Information

+ Battery Information

+ System Event Log

Screen Brightness Duration Histogram

Duration in seconds at various screen brightness levels



Search Indexer Data

+ Query Events

+ File System Change Events

Srum Data

Data obtained from the SRUM database. * in Power Estimation means the power value is from energy meter. Otherwise, it is from software model estimation.

+ Energy Meter

+ Power Estimation

Top

System Power State: Active

SESSION ID	START TIME	DURATION	STATE	ENTRY REASON	EXIT REASON	% CAPACITY REMAINING AT START
156	2026-02-06 12:02:22	0:00:01	Active	Power Source Changed	----	98%

Detailed Session Information

+ Battery Information

+ System Event Log

Srum Data

Data obtained from the SRUM database. * in Power Estimation means the power value is from energy meter. Otherwise, it is from software model estimation.

+ Energy Meter

+ Power Estimation

Top

System Power State: Screen Off

SESSION ID	START TIME	DURATION	STATE	ENTRY REASON	EXIT REASON	% CAPACITY REMAINING AT START
157	2026-02-06 12:02:24	0:01:46	Screen Off	Video Idle Timeout	Transition To Sleep	98%

Detailed Session Information

+ Battery Information

+ General

+ System Event Log

Srum Data

Data obtained from the SRUM database. * in Power Estimation means the power value is from energy meter. Otherwise, it is from software model estimation.

+ Energy Meter

+ Power Estimation

This session contains no detailed information about top offenders.

Top

System Power State: Sleep

SESSION ID	START TIME	DURATION	STATE	ENTRY REASON	EXIT REASON	% CAPACITY REMAINING AT START
158	2026-02-06 12:04:11	0:08:06	Sleep	Transition To Sleep	Input Touchpad	98%

Detailed Session Information

- + Battery Information
- + General
- + System Event Log

Srum Data

Data obtained from the SRUM database. * in Power Estimation means the power value is from energy meter. Otherwise, it is from software model estimation.

- + Energy Meter
- + Power Estimation

This session contains no detailed information about top offenders.

Top

System Power State: Active

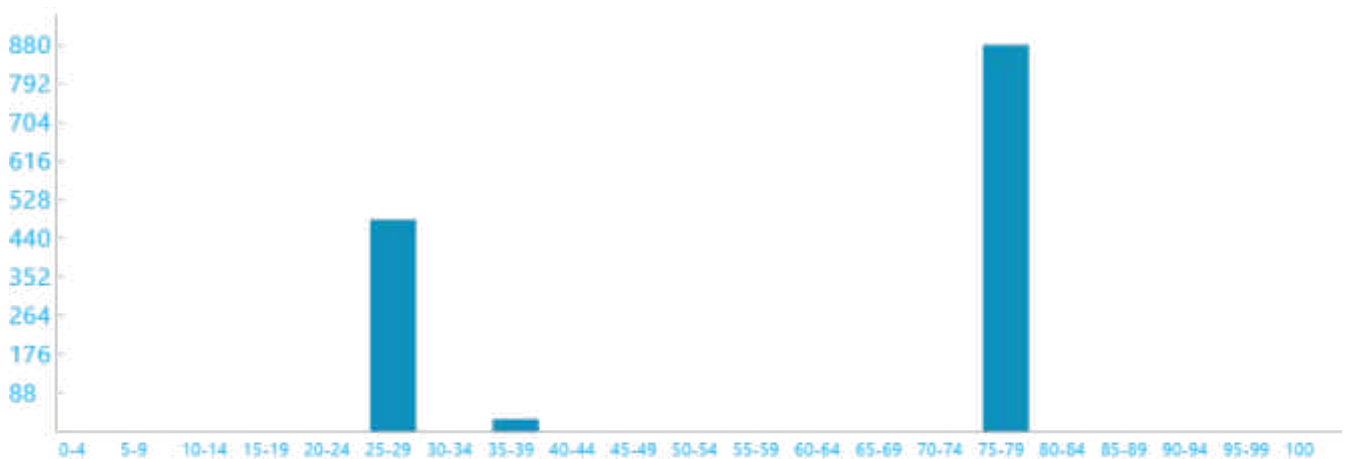
SESSION ID	START TIME	DURATION	STATE	ENTRY REASON	EXIT REASON	% CAPACITY REMAINING AT START
159	2026-02-06 12:12:17	0:15:12	Active	MonitorOn	MonitorOff	98%

Detailed Session Information

- + Battery Information
- + System Event Log

Screen Brightness Duration Histogram

Duration in seconds at various screen brightness levels



Search Indexer Data

- + File System Change Events

Srum Data

Data obtained from the SRUM database. * in Power Estimation means the power value is from energy meter. Otherwise, it is from software model estimation.

- + Energy Meter
- + Power Estimation

Top

System Power State: Screen Off

SESSION ID	START TIME	DURATION	STATE	ENERGY CHANGE	CHANGE RATE	% LOW POWER STATE TIME	% CAPACITY REMAINING AT START
160	2026-02-06 12:27:29	0:02:11	Screen Off	91 0% of mWh battery	2,489 mW Drain	-	95%

Detailed Session Information

- + Battery Information
- + General
- + Settings
- + System Event Log

Top Offenders

Top 5 Offenders, ranked by active time

NAME	TYPE	% ACTIVE TIME	ACTIVE TIME
No CS Phase	PDC Phase	100%	0:02:11

Session Blockers

- + Audio Activity
- + PDC Phases

Srum Data

Data obtained from the SRUM database. * in Power Estimation means the power value is from energy meter. Otherwise, it is from software model estimation.

- + Energy Meter
- + Power Estimation

Top

System Power State: Sleep

SESSION ID	START TIME	DURATION	STATE	ENERGY CHANGE	CHANGE RATE	% LOW POWER STATE TIME	% CAPACITY REMAINING AT START
161	2026-02-06 12:29:41	0:18:30	Sleep	349 1% of mWh battery	1,131 mW Drain	SW: 0%	94%

Detailed Session Information

- + Battery Information
- + General
- + MS Exit Latency [ms]
- + Settings
- + System Event Log

DRIPS Histogram

Percent of time spent in DRIPS bucketed by time interval length



Top Offenders

Top 5 Offenders, ranked by active time

NAME	TYPE	% ACTIVE TIME	ACTIVE TIME
USB xHCI Compliant Host Controller (_SB.PC00.XHCI)	Fx Device	98%	0:18:17
USB xHCI Compliant Host Controller (_SB.PC00.TXHC)	Fx Device	98%	0:18:17
Intel(R) PEG60 - 464D (_SB.PC00.PEG0)	Fx Device	3%	0:00:35
Low Power Phase	PDC Phase	0%	0:00:05
Intel(R) Ethernet Connection (16) I219-LM (_SB.PC00.GLAN)	Fx Device	0%	0:00:04

Session Blockers

- + Audio Activity
- + PDC Phases
- + Activators
- + FX Devices
- + Processors
- + PEP Pre-Vetoes
- + SOC Subsystems

Srum Data

Data obtained from the SRUM database. * in Power Estimation means the power value is from energy meter. Otherwise, it is from software model estimation.

+ Energy Meter

+ Power Estimation

Top

System Power State: Active

SESSION ID	START TIME	DURATION	STATE	ENTRY REASON	EXIT REASON	% CAPACITY REMAINING AT START
162	2026-02-06 12:48:07	0:48:32	Active	MonitorOn	SwitchToAC	94%

Detailed Session Information

+ Battery Information

+ System Event Log

Screen Brightness Duration Histogram

Duration in seconds at various screen brightness levels



Search Indexer Data

+ Query Events

+ File System Change Events

Srum Data

Data obtained from the SRUM database. * in Power Estimation means the power value is from energy meter. Otherwise, it is from software model estimation.

+ Energy Meter

+ Power Estimation

Top

System Power State: Active

SESSION ID	START TIME	DURATION	STATE	ENTRY REASON	EXIT REASON	% CAPACITY REMAINING AT START
163	2026-02-06 13:36:39	1:15:42	Active	SwitchToAC	SwitchToDC	84%

Detailed Session Information

+ Battery Information

+ System Event Log

Screen Brightness Duration Histogram

Duration in seconds at various screen brightness levels



Search Indexer Data

+ Query Events

+ File System Change Events

Srum Data

Data obtained from the SRUM database. * in Power Estimation means the power value is from energy meter. Otherwise, it is from software model estimation.

+ Energy Meter

+ Power Estimation

Top

System Power State: Active

SESSION ID	START TIME	DURATION	STATE	ENTRY REASON	EXIT REASON	% CAPACITY REMAINING AT START
164	2026-02-06 14:52:22	1:48:35	Active	SwitchToDC	MonitorOff	100%

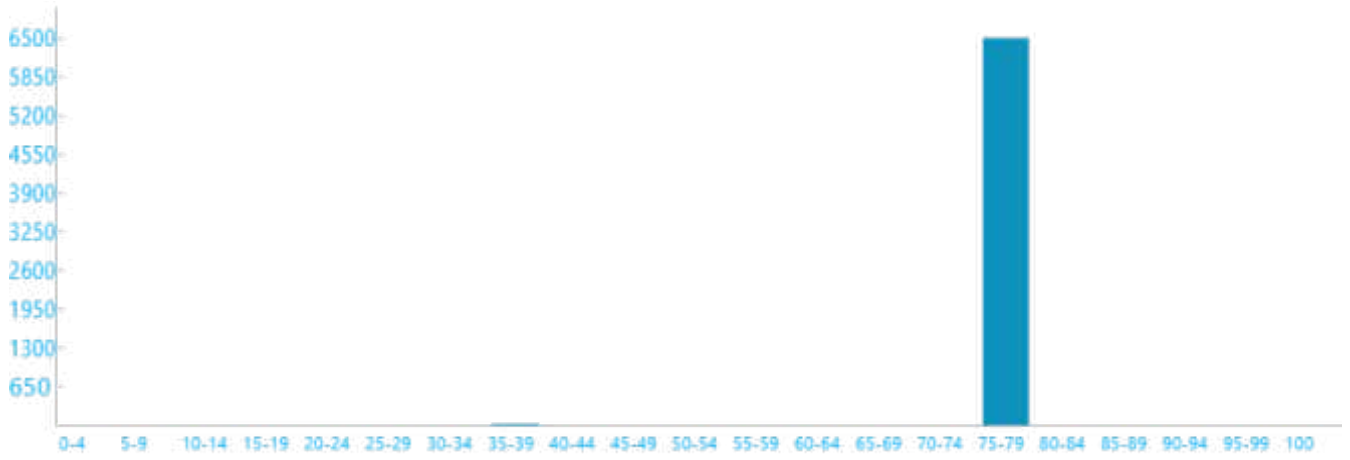
Detailed Session Information

+ Battery Information

+ System Event Log

Screen Brightness Duration Histogram

Duration in seconds at various screen brightness levels



Search Indexer Data

- + Query Events
- + File System Change Events

Srum Data

Data obtained from the SRUM database. * in Power Estimation means the power value is from energy meter. Otherwise, it is from software model estimation.

- + Energy Meter
- + Power Estimation

Top

System Power State: Screen Off

SESSION ID	START TIME	DURATION	STATE	ENERGY CHANGE	CHANGE RATE	% LOW POWER STATE TIME	% CAPACITY REMAINING AT START
165	2026-02-06 16:40:57	3:35:45	Screen Off	6,901 mWh 15% of battery	1,919 mW Drain	-	74%

Detailed Session Information

- + Battery Information
- + General
- + MS Exit Latency [ms]
- + Settings
- + System Event Log

Top Offenders

Top 5 Offenders, ranked by active time

NAME	TYPE	% ACTIVE TIME	ACTIVE TIME
No CS Phase	PDC Phase	99%	3:35:45

Session Blockers

+ Audio Activity

+ PDC Phases

Srum Data

Data obtained from the SRUM database. * in Power Estimation means the power value is from energy meter. Otherwise, it is from software model estimation.

+ Energy Meter

+ Power Estimation

Top

System Power State: Active

SESSION ID	START TIME	DURATION	STATE	ENTRY REASON	EXIT REASON	% CAPACITY REMAINING AT START
166	2026-02-06 20:16:42	0:12:24	Active	MonitorOn	MonitorOff	60%

Detailed Session Information

+ Battery Information

+ System Event Log

Screen Brightness Duration Histogram

Duration in seconds at various screen brightness levels



Search Indexer Data

+ File System Change Events

Srum Data

Data obtained from the SRUM database. * in Power Estimation means the power value is from energy meter. Otherwise, it is from software model estimation.

+ Energy Meter

+ Power Estimation

Top

System Power State: Hibernate

SESSION ID	START TIME	DURATION	STATE	ENTRY REASON	EXIT REASON	% CAPACITY REMAINING AT START
167	2026-02-06 20:29:08	23:42:53	Hibernate	Button or Lid	Unknown	57%

Detailed Session Information

- + Battery Information
- + System Event Log

Srum Data

Data obtained from the SRUM database. * in Power Estimation means the power value is from energy meter. Otherwise, it is from software model estimation.

- + Energy Meter
- + Power Estimation

Top

System Power State: Screen Off

SESSION ID	START TIME	DURATION	STATE	ENTRY REASON	EXIT REASON	% CAPACITY REMAINING AT START
168	2026-02-07 20:12:02	0:00:00	Screen Off	Hibernate, or Shutdown	Lid	57%

Detailed Session Information

- + Battery Information
- + General
- + System Event Log

This session contains no detailed information about top offenders.

Top

System Power State: Active

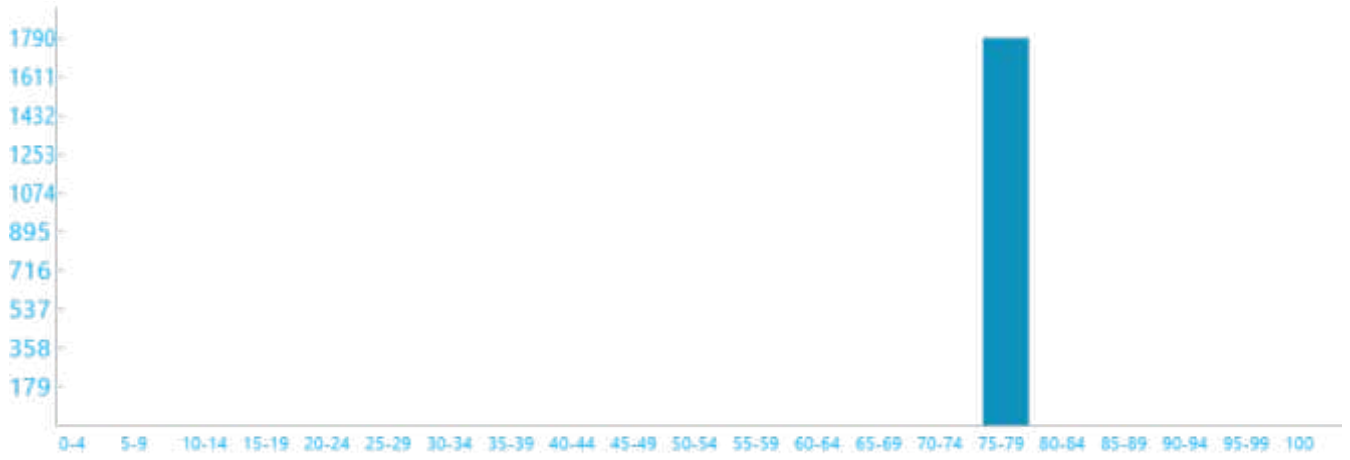
SESSION ID	START TIME	DURATION	STATE	ENTRY REASON	EXIT REASON	% CAPACITY REMAINING AT START
169	2026-02-07 20:13:12	0:29:49	Active	MonitorOn	MonitorOff	57%

Detailed Session Information

- + Battery Information
- + System Event Log

Screen Brightness Duration Histogram

Duration in seconds at various screen brightness levels



Search Indexer Data

- + Query Events
- + File System Change Events

Srum Data

Data obtained from the SRUM database. * in Power Estimation means the power value is from energy meter. Otherwise, it is from software model estimation.

- + Energy Meter
- + Power Estimation

Top

System Power State: Screen Off

SESSION ID	START TIME	DURATION	STATE	ENTRY REASON	EXIT REASON	% CAPACITY REMAINING AT START
170	2026-02-07 20:43:00	0:00:29	Screen Off	Video Idle Timeout	Input Touchpad	47%

Detailed Session Information

- + Battery Information
- + General
- + System Event Log

Srum Data

Data obtained from the SRUM database. * in Power Estimation means the power value is from energy meter. Otherwise, it is from software model estimation.

- + Energy Meter
- + Power Estimation

This session contains no detailed information about top offenders.

Top

System Power State: Active

SESSION ID	START TIME	DURATION	STATE	ENTRY REASON	EXIT REASON	% CAPACITY REMAINING AT START
171	2026-02-07 20:43:30	0:11:44	Active	MonitorOn	MonitorOff	47%

Detailed Session Information

- + Battery Information
- + System Event Log

Screen Brightness Duration Histogram
Duration in seconds at various screen brightness levels



Search Indexer Data

- + Query Events
- + File System Change Events

Srum Data

Data obtained from the SRUM database. * in Power Estimation means the power value is from energy meter. Otherwise, it is from software model estimation.

- + Energy Meter
- + Power Estimation

Top

System Power State: Screen Off

SESSION ID	START TIME	DURATION	STATE	ENTRY REASON	EXIT REASON	% CAPACITY REMAINING AT START
172	2026-02-07 20:55:14	0:01:04	Screen Off	Video Idle Timeout	Input Keyboard	43%

Detailed Session Information

- + Battery Information
- + General
- + System Event Log

Srum Data

Data obtained from the SRUM database. * in Power Estimation means the power value is from energy meter. Otherwise, it is from software model estimation.

+ Energy Meter

+ Power Estimation

This session contains no detailed information about top offenders.

Top

System Power State: Active

SESSION ID	START TIME	DURATION	STATE	ENTRY REASON	EXIT REASON	% CAPACITY REMAINING AT START
173	2026-02-07 20:56:19	0:21:24	Active	MonitorOn	MonitorOff	43%

Detailed Session Information

+ Battery Information

+ System Event Log

Screen Brightness Duration Histogram

Duration in seconds at various screen brightness levels



Search Indexer Data

+ Query Events

+ File System Change Events

Srum Data

Data obtained from the SRUM database. * in Power Estimation means the power value is from energy meter. Otherwise, it is from software model estimation.

+ Energy Meter

+ Power Estimation

Top

System Power State: Screen Off

SESSION ID	START TIME	DURATION	STATE	ENTRY REASON	EXIT REASON	% CAPACITY REMAINING AT START
174	2026-02-07 21:17:43	0:00:03	Screen Off	Video Idle Timeout	Input Keyboard	35%

Detailed Session Information

- + Battery Information
- + General
- + System Event Log

Srum Data

Data obtained from the SRUM database. * in Power Estimation means the power value is from energy meter. Otherwise, it is from software model estimation.

- + Energy Meter
- + Power Estimation

This session contains no detailed information about top offenders.

Top

System Power State: Active

SESSION ID	START TIME	DURATION	STATE	ENTRY REASON	EXIT REASON	% CAPACITY REMAINING AT START
175	2026-02-07 21:17:46	0:01:16	Active	----	Kernel API	35%

Detailed Session Information

- + Battery Information
- + System Event Log

Srum Data

Data obtained from the SRUM database. * in Power Estimation means the power value is from energy meter. Otherwise, it is from software model estimation.

- + Energy Meter
- + Power Estimation

Top

System Power State: Shutdown

SESSION ID	START TIME	DURATION	STATE	ENTRY REASON	EXIT REASON	% CAPACITY REMAINING AT START
176	2026-02-07 21:19:02	0:00:17	Shutdown	----	----	34%

Detailed Session Information

- + Battery Information
- + System Event Log

Srum Data

Data obtained from the SRUM database. * in Power Estimation means the power value is from energy meter. Otherwise, it is from software model estimation.

+ Energy Meter

+ Power Estimation

Top

System Power State: Active

SESSION ID	START TIME	DURATION	STATE	ENTRY REASON	EXIT REASON	% CAPACITY REMAINING AT START
177	2026-02-07 21:19:20	0:00:51	Active	----	----	33%

Detailed Session Information

+ Battery Information

+ System Event Log

Srum Data

Data obtained from the SRUM database. * in Power Estimation means the power value is from energy meter. Otherwise, it is from software model estimation.

+ Energy Meter

+ Power Estimation

Top

System Power State: Screen Off

SESSION ID	START TIME	DURATION	STATE	ENTRY REASON	EXIT REASON	% CAPACITY REMAINING AT START
178	2026-02-07 21:20:12	0:01:09	Screen Off	Video Idle Timeout	Input Keyboard	33%

Detailed Session Information

+ Battery Information

+ General

+ System Event Log

Srum Data

Data obtained from the SRUM database. * in Power Estimation means the power value is from energy meter. Otherwise, it is from software model estimation.

+ Energy Meter

+ Power Estimation

This session contains no detailed information about top offenders.

Top

System Power State: Active

SESSION ID	START TIME	DURATION	STATE	ENTRY REASON	EXIT REASON	% CAPACITY REMAINING AT START
179	2026-02-07 21:21:21	0:03:29	Active	MonitorOn	MonitorOff	33%

Detailed Session Information

- + Battery Information
- + System Event Log

Screen Brightness Duration Histogram
Duration in seconds at various screen brightness levels



Search Indexer Data

- + File System Change Events

Srum Data

Data obtained from the SRUM database. * in Power Estimation means the power value is from energy meter. Otherwise, it is from software model estimation.

- + Energy Meter
- + Power Estimation

Top

System Power State: Screen Off

SESSION ID	START TIME	DURATION	STATE	ENTRY REASON	EXIT REASON	% CAPACITY REMAINING AT START
180	2026-02-07 21:24:50	0:00:00	Screen Off	SC_MONITORPOWER	Input Touchpad	31%

Detailed Session Information

- + Battery Information
- + General
- + System Event Log

This session contains no detailed information about top offenders.

Top

System Power State: Active

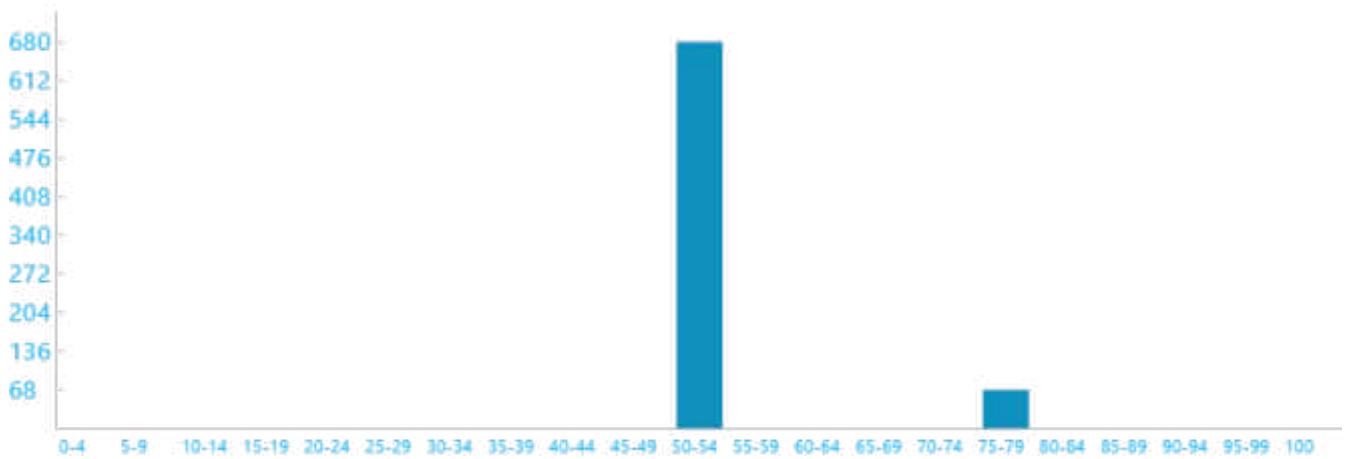
SESSION ID	START TIME	DURATION	STATE	ENTRY REASON	EXIT REASON	% CAPACITY REMAINING AT START
181	2026-02-07 21:24:51	0:12:30	Active	MonitorOn	MonitorOff	31%

Detailed Session Information

- + Battery Information
- + System Event Log

Screen Brightness Duration Histogram

Duration in seconds at various screen brightness levels



Search Indexer Data

- + File System Change Events

Srum Data

Data obtained from the SRUM database. * in Power Estimation means the power value is from energy meter. Otherwise, it is from software model estimation.

- + Energy Meter
- + Power Estimation

Top

System Power State: Screen Off

SESSION ID	START TIME	DURATION	STATE	ENTRY REASON	EXIT REASON	% CAPACITY REMAINING AT START
182	2026-02-07 21:37:21	0:01:28	Screen Off	Video Idle Timeout	Input Touchpad	26%

Detailed Session Information

- + Battery Information
- + General
- + System Event Log

Srum Data

Data obtained from the SRUM database. * in Power Estimation means the power value is from energy meter. Otherwise, it is from software model estimation.

+ Energy Meter

+ Power Estimation

This session contains no detailed information about top offenders.

Top

System Power State: Active

SESSION ID	START TIME	DURATION	STATE	ENTRY REASON	EXIT REASON	% CAPACITY REMAINING AT START
183	2026-02-07 21:38:50	0:01:07	Active	MonitorOn	MonitorOff	25%

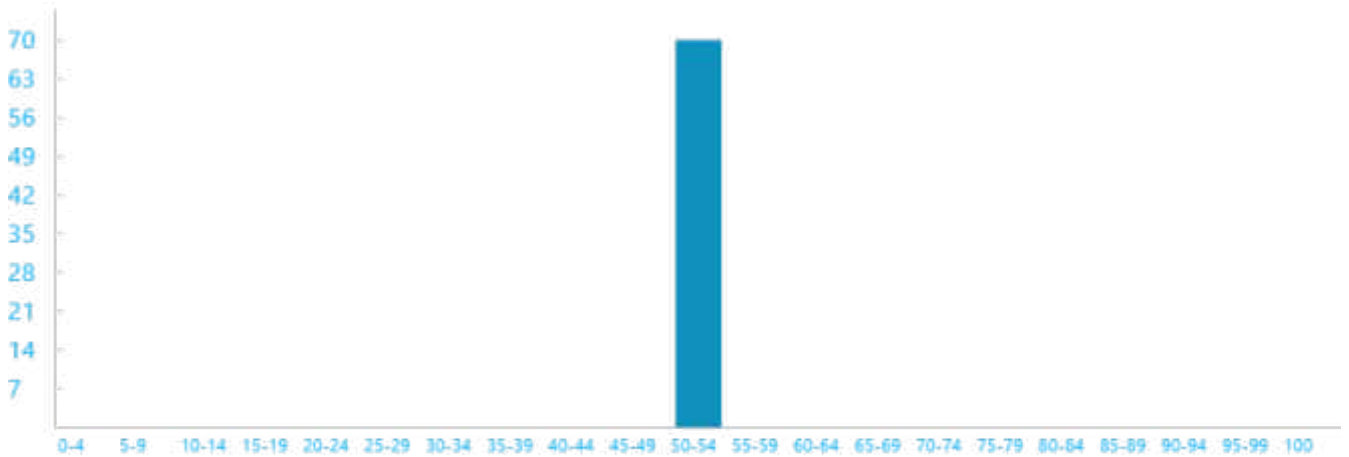
Detailed Session Information

+ Battery Information

+ System Event Log

Screen Brightness Duration Histogram

Duration in seconds at various screen brightness levels



Search Indexer Data

+ File System Change Events

Srum Data

Data obtained from the SRUM database. * in Power Estimation means the power value is from energy meter. Otherwise, it is from software model estimation.

+ Energy Meter

+ Power Estimation

Top

System Power State: Screen Off

SESSION ID	START TIME	DURATION	STATE	ENTRY REASON	EXIT REASON	% CAPACITY REMAINING AT START
184	2026-02-07 21:39:57	0:00:00	Screen Off	SC_MONITORPOWER	Input Touchpad	25%

Detailed Session Information

- + Battery Information
- + General
- + System Event Log

This session contains no detailed information about top offenders.

Top

System Power State: Active

SESSION ID	START TIME	DURATION	STATE	ENTRY REASON	EXIT REASON	% CAPACITY REMAINING AT START
185	2026-02-07 21:39:58	0:14:37	Active	----	Kernel API	25%

Detailed Session Information

- + Battery Information
- + System Event Log

Srum Data

Data obtained from the SRUM database. * in Power Estimation means the power value is from energy meter. Otherwise, it is from software model estimation.

- + Energy Meter
- + Power Estimation

Top

System Power State: Shutdown

SESSION ID	START TIME	DURATION	STATE	ENTRY REASON	EXIT REASON	% CAPACITY REMAINING AT START
186	2026-02-07 21:55:07	0:00:19	Shutdown	----	----	19%

Detailed Session Information

- + Battery Information
- + System Event Log

Srum Data

Data obtained from the SRUM database. * in Power Estimation means the power value is from energy meter. Otherwise, it is from software model estimation.

- + Energy Meter
- + Power Estimation

Top

System Power State: Active

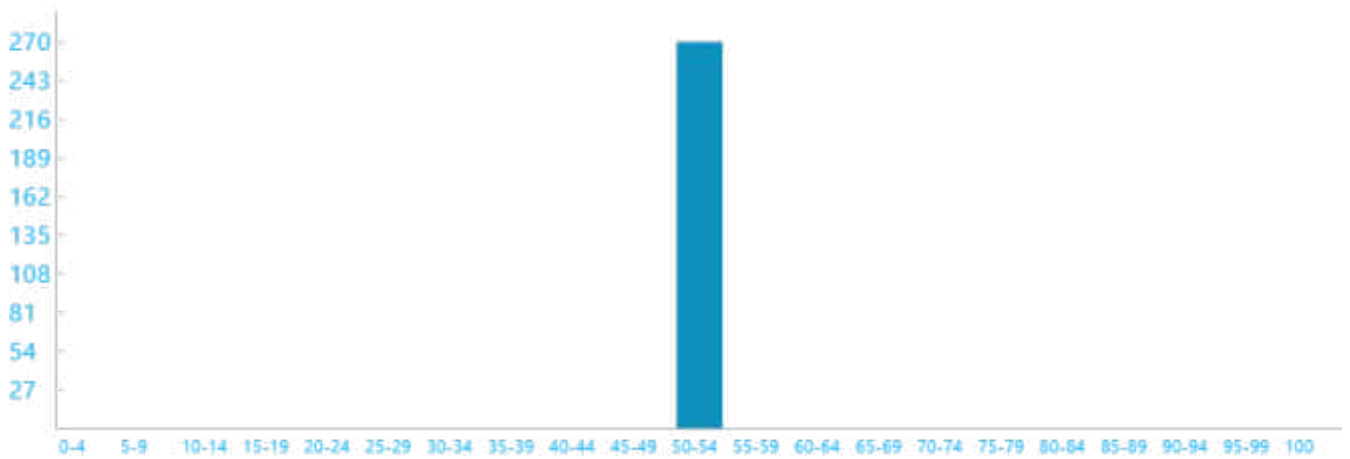
SESSION ID	START TIME	DURATION	STATE	ENTRY REASON	EXIT REASON	% CAPACITY REMAINING AT START
187	2026-02-07 21:55:42	0:04:28	Active	Initialization	MonitorOff	18%

Detailed Session Information

- + Battery Information
- + System Event Log

Screen Brightness Duration Histogram

Duration in seconds at various screen brightness levels



Search Indexer Data

- + Query Events
- + File System Change Events

Srum Data

Data obtained from the SRUM database. * in Power Estimation means the power value is from energy meter. Otherwise, it is from software model estimation.

- + Energy Meter
- + Power Estimation

Top

System Power State: Screen Off

SESSION ID	START TIME	DURATION	STATE	ENTRY REASON	EXIT REASON	% CAPACITY REMAINING AT START
188	2026-02-07 22:00:11	0:00:03	Screen Off	Video Idle Timeout	Input Touchpad	16%

Detailed Session Information

- + Battery Information
- + General

+ System Event Log

Srum Data

Data obtained from the SRUM database. * in Power Estimation means the power value is from energy meter. Otherwise, it is from software model estimation.

+ Energy Meter

+ Power Estimation

This session contains no detailed information about top offenders.

Top

System Power State: Active

SESSION ID	START TIME	DURATION	STATE	ENTRY REASON	EXIT REASON	% CAPACITY REMAINING AT START
189	2026-02-07 22:00:14	0:03:46	Active	MonitorOn	MonitorOff	16%

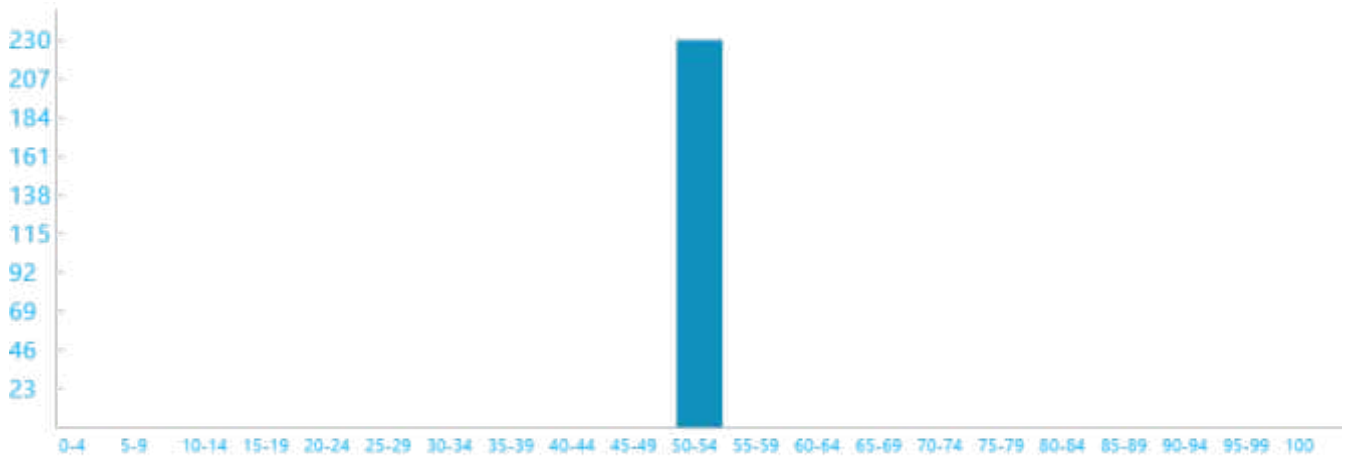
Detailed Session Information

+ Battery Information

+ System Event Log

Screen Brightness Duration Histogram

Duration in seconds at various screen brightness levels



Search Indexer Data

+ File System Change Events

Srum Data

Data obtained from the SRUM database. * in Power Estimation means the power value is from energy meter. Otherwise, it is from software model estimation.

+ Energy Meter

+ Power Estimation

Top

System Power State: Screen Off

SESSION ID	START TIME	DURATION	STATE	ENTRY REASON	EXIT REASON	% CAPACITY REMAINING AT START
190	2026-02-07 22:04:01	0:00:04	Screen Off	Video Idle Timeout	Input Touchpad	14%

Detailed Session Information

- + Battery Information
- + General
- + System Event Log

Strum Data

Data obtained from the SRUM database. * in Power Estimation means the power value is from energy meter. Otherwise, it is from software model estimation.

- + Energy Meter
- + Power Estimation

This session contains no detailed information about top offenders.

Top

System Power State: Active

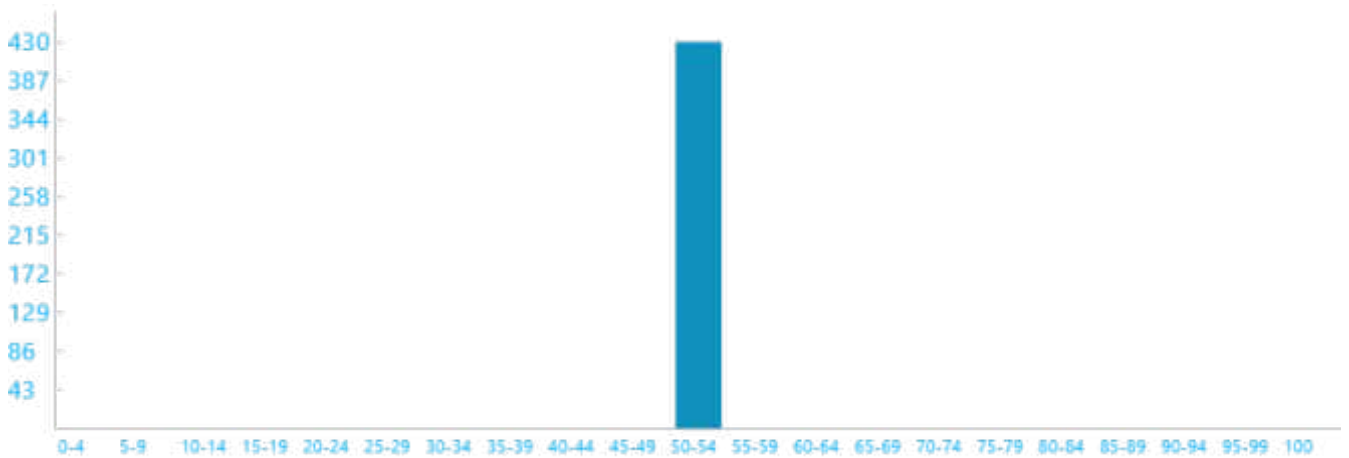
SESSION ID	START TIME	DURATION	STATE	ENTRY REASON	EXIT REASON	% CAPACITY REMAINING AT START
191	2026-02-07 22:04:06	0:07:12	Active	MonitorOn	MonitorOff	14%

Detailed Session Information

- + Battery Information
- + System Event Log

Screen Brightness Duration Histogram

Duration in seconds at various screen brightness levels



Search Indexer Data

- + Query Events

+ File System Change Events

Srum Data

Data obtained from the SRUM database. * in Power Estimation means the power value is from energy meter. Otherwise, it is from software model estimation.

+ Energy Meter

+ Power Estimation

Top

System Power State: Screen Off

SESSION ID	START TIME	DURATION	STATE	ENTRY REASON	EXIT REASON	% CAPACITY REMAINING AT START
192	2026-02-07 22:11:18	0:00:05	Screen Off	Video Idle Timeout	Input Touchpad	11%

Detailed Session Information

+ Battery Information

+ General

+ System Event Log

Srum Data

Data obtained from the SRUM database. * in Power Estimation means the power value is from energy meter. Otherwise, it is from software model estimation.

+ Energy Meter

+ Power Estimation

This session contains no detailed information about top offenders.

Top

System Power State: Active

SESSION ID	START TIME	DURATION	STATE	ENTRY REASON	EXIT REASON	% CAPACITY REMAINING AT START
193	2026-02-07 22:11:24	0:18:11	Active	MonitorOn	MonitorOff	11%

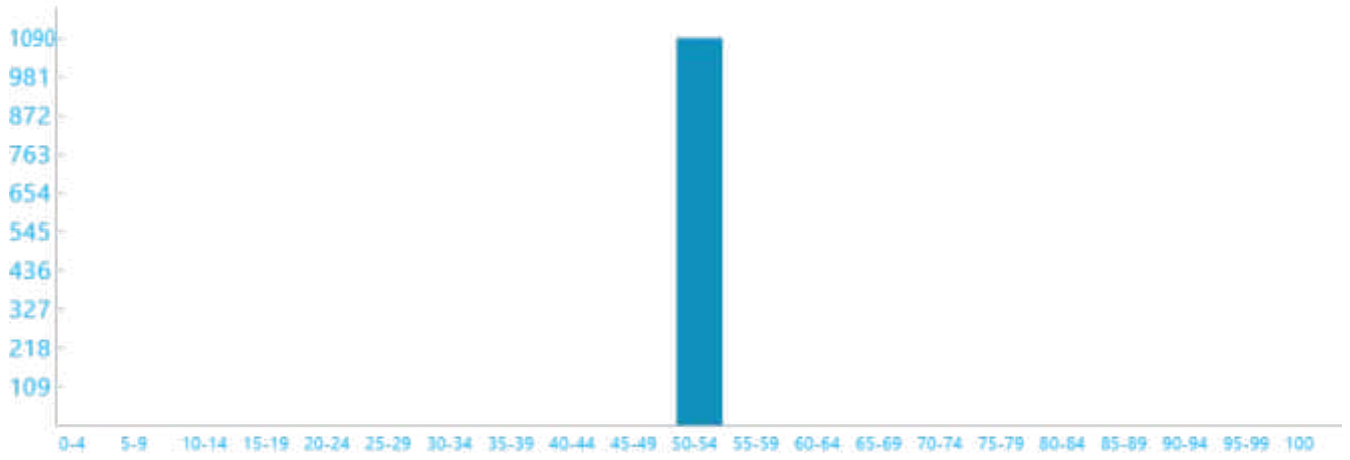
Detailed Session Information

+ Battery Information

+ System Event Log

Screen Brightness Duration Histogram

Duration in seconds at various screen brightness levels



Search Indexer Data

- + Query Events
- + File System Change Events

Srum Data

Data obtained from the SRUM database. * in Power Estimation means the power value is from energy meter. Otherwise, it is from software model estimation.

- + Energy Meter
- + Power Estimation

Top

System Power State: Screen Off

SESSION ID	START TIME	DURATION	STATE	ENTRY REASON	EXIT REASON	% CAPACITY REMAINING AT START
194	2026-02-07 22:29:35	0:01:15	Screen Off	Video Idle Timeout	Input Touchpad	7%

Detailed Session Information

- + Battery Information
- + General
- + System Event Log

Srum Data

Data obtained from the SRUM database. * in Power Estimation means the power value is from energy meter. Otherwise, it is from software model estimation.

- + Energy Meter
- + Power Estimation

This session contains no detailed information about top offenders.

Top

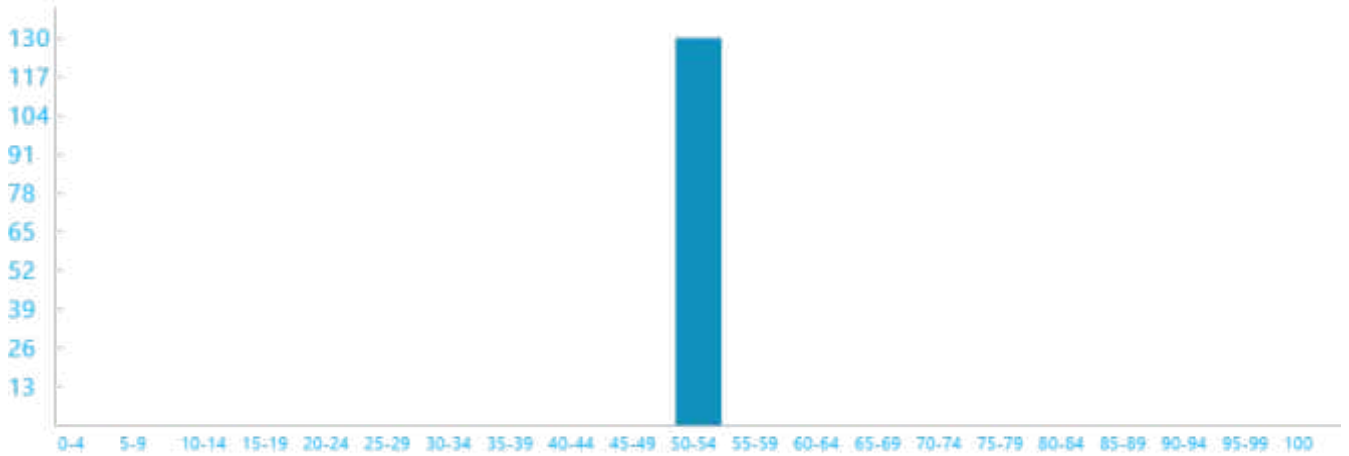
System Power State: Active

SESSION ID	START TIME	DURATION	STATE	ENTRY REASON	EXIT REASON	% CAPACITY REMAINING AT START
195	2026-02-07 22:30:50	0:02:11	Active	MonitorOn	MonitorOff	7%

Detailed Session Information

- + Battery Information
- + System Event Log

Screen Brightness Duration Histogram
 Duration in seconds at various screen brightness levels



Search Indexer Data

- + File System Change Events

Srum Data

Data obtained from the SRUM database. * in Power Estimation means the power value is from energy meter. Otherwise, it is from software model estimation.

- + Energy Meter
- + Power Estimation



System Power State: Screen Off

SESSION ID	START TIME	DURATION	STATE	ENTRY REASON	EXIT REASON	% CAPACITY REMAINING AT START
196	2026-02-07 22:33:02	0:00:08	Screen Off	Video Idle Timeout	Input Touchpad	7%

Detailed Session Information

- + Battery Information
- + General
- + System Event Log

Srum Data

Data obtained from the SRUM database. * in Power Estimation means the power value is from energy meter. Otherwise, it is from software model estimation.

+ Energy Meter

+ Power Estimation

This session contains no detailed information about top offenders.

Top

System Power State: Active

SESSION ID	START TIME	DURATION	STATE	ENTRY REASON	EXIT REASON	% CAPACITY REMAINING AT START
197	2026-02-07 22:33:10	0:02:23	Active	MonitorOn	MonitorOff	7%

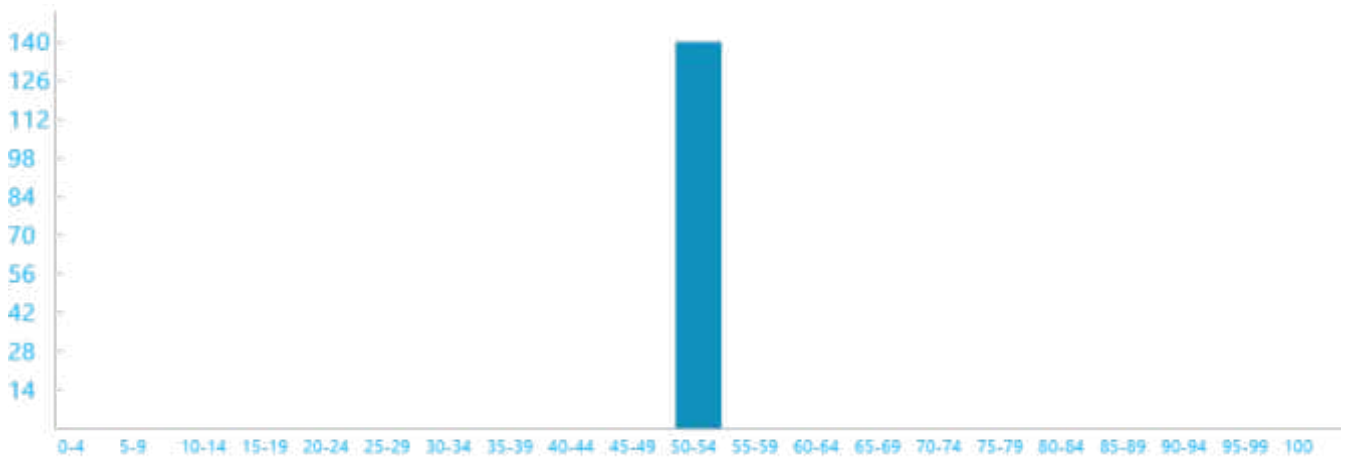
Detailed Session Information

+ Battery Information

+ System Event Log

Screen Brightness Duration Histogram

Duration in seconds at various screen brightness levels



Search Indexer Data

+ File System Change Events

Srum Data

Data obtained from the SRUM database. * in Power Estimation means the power value is from energy meter. Otherwise, it is from software model estimation.

+ Energy Meter

+ Power Estimation

Top

System Power State: Screen Off

SESSION ID	START TIME	DURATION	STATE	ENTRY REASON	EXIT REASON	% CAPACITY REMAINING AT START
198	2026-02-07 22:35:33	0:01:24	Screen Off	Video Idle Timeout	Input Touchpad	7%

Detailed Session Information

- + Battery Information
- + General
- + System Event Log

Srum Data

Data obtained from the SRUM database. * in Power Estimation means the power value is from energy meter. Otherwise, it is from software model estimation.

- + Energy Meter
- + Power Estimation

This session contains no detailed information about top offenders.

Top

System Power State: Active

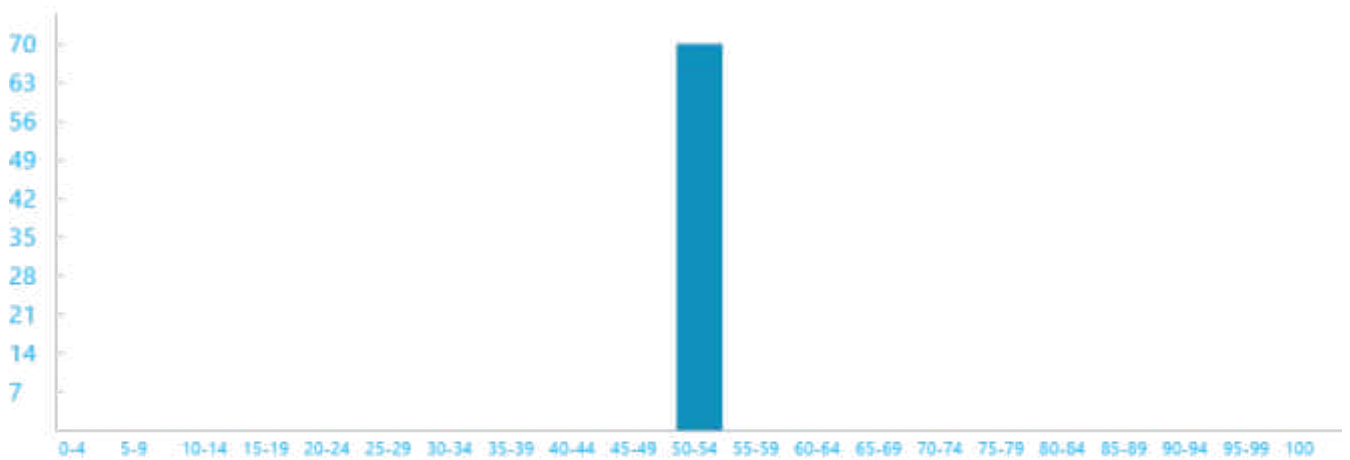
SESSION ID	START TIME	DURATION	STATE	ENTRY REASON	EXIT REASON	% CAPACITY REMAINING AT START
199	2026-02-07 22:36:58	0:01:05	Active	MonitorOn	MonitorOff	7%

Detailed Session Information

- + Battery Information
- + System Event Log

Screen Brightness Duration Histogram

Duration in seconds at various screen brightness levels



Search Indexer Data

- + File System Change Events

Srum Data

Data obtained from the SRUM database. * in Power Estimation means the power value is from energy meter. Otherwise, it is from software model estimation.

- + Energy Meter

+ Power Estimation

Top

System Power State: Screen Off

SESSION ID	START TIME	DURATION	STATE	ENTRY REASON	EXIT REASON	% CAPACITY REMAINING AT START
200	2026-02-07 22:38:03	0:00:53	Screen Off	Video Idle Timeout	Input Touchpad	7%

Detailed Session Information

- + Battery Information
- + General
- + System Event Log

SRUM Data

Data obtained from the SRUM database. * in Power Estimation means the power value is from energy meter. Otherwise, it is from software model estimation.

- + Energy Meter
- + Power Estimation

This session contains no detailed information about top offenders.

Top

System Power State: Active

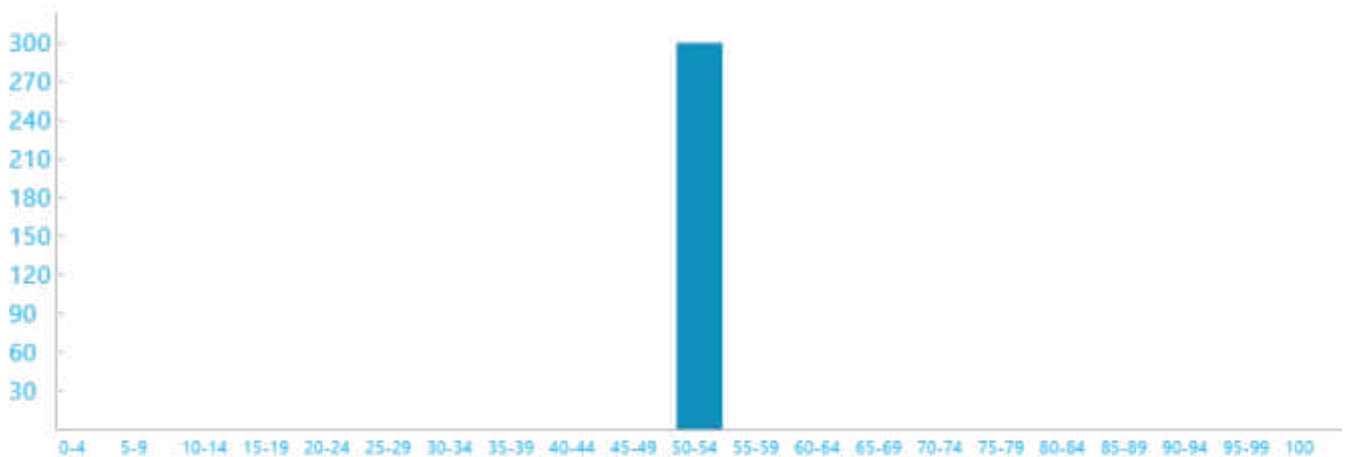
SESSION ID	START TIME	DURATION	STATE	ENTRY REASON	EXIT REASON	% CAPACITY REMAINING AT START
201	2026-02-07 22:38:56	0:04:57	Active	MonitorOn	MonitorOff	7%

Detailed Session Information

- + Battery Information
- + System Event Log

Screen Brightness Duration Histogram

Duration in seconds at various screen brightness levels



Search Indexer Data

- + Query Events
- + File System Change Events

Srum Data

Data obtained from the SRUM database. * in Power Estimation means the power value is from energy meter. Otherwise, it is from software model estimation.

- + Energy Meter
- + Power Estimation

Top

System Power State: Screen Off

SESSION ID	START TIME	DURATION	STATE	ENTRY REASON	EXIT REASON	% CAPACITY REMAINING AT START
202	2026-02-07 22:43:53	0:00:07	Screen Off	Video Idle Timeout	Input Touchpad	7%

Detailed Session Information

- + Battery Information
- + General
- + System Event Log

Srum Data

Data obtained from the SRUM database. * in Power Estimation means the power value is from energy meter. Otherwise, it is from software model estimation.

- + Energy Meter
- + Power Estimation

This session contains no detailed information about top offenders.

Top

System Power State: Active

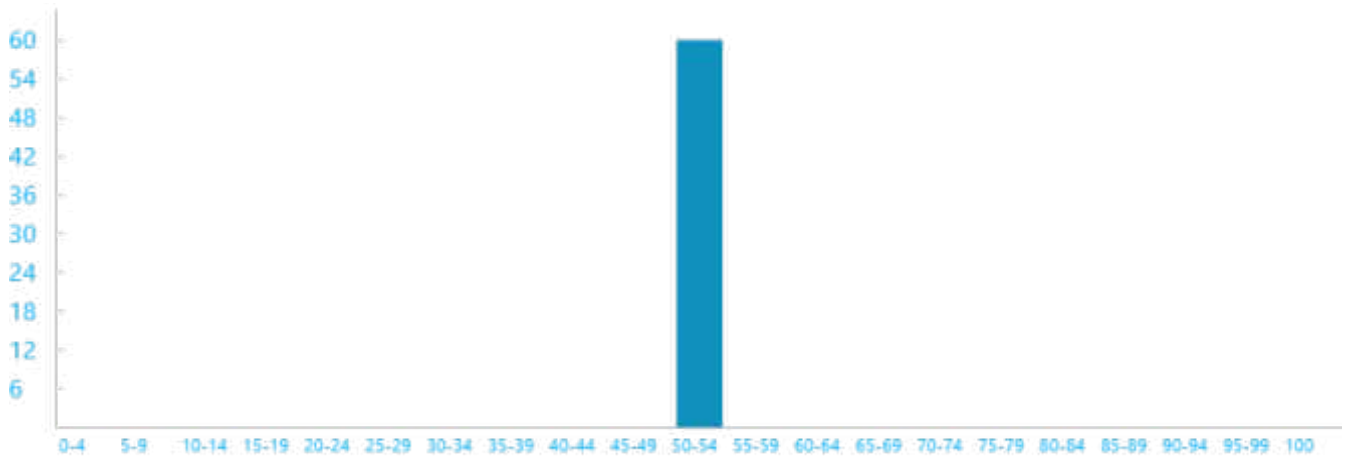
SESSION ID	START TIME	DURATION	STATE	ENTRY REASON	EXIT REASON	% CAPACITY REMAINING AT START
203	2026-02-07 22:44:01	0:01:03	Active	MonitorOn	MonitorOff	7%

Detailed Session Information

- + Battery Information
- + System Event Log

Screen Brightness Duration Histogram

Duration in seconds at various screen brightness levels



Search Indexer Data

- + File System Change Events

Srum Data

Data obtained from the SRUM database. * in Power Estimation means the power value is from energy meter. Otherwise, it is from software model estimation.

- + Energy Meter
- + Power Estimation

Top

System Power State: Screen Off

SESSION ID	START TIME	DURATION	STATE	ENTRY REASON	EXIT REASON	% CAPACITY REMAINING AT START
204	2026-02-07 22:45:03	0:00:07	Screen Off	Video Idle Timeout	Input Touchpad	7%

Detailed Session Information

- + Battery Information
- + General
- + System Event Log

Srum Data

Data obtained from the SRUM database. * in Power Estimation means the power value is from energy meter. Otherwise, it is from software model estimation.

- + Energy Meter
- + Power Estimation

This session contains no detailed information about top offenders.

Top

System Power State: Active

SESSION ID	START TIME	DURATION	STATE	ENTRY REASON	EXIT REASON	% CAPACITY REMAINING AT START
205	2026-02-07 22:45:11	0:02:48	Active	----	Kernel API	7%

Detailed Session Information

- + Battery Information
- + System Event Log

Srum Data

Data obtained from the SRUM database. * in Power Estimation means the power value is from energy meter. Otherwise, it is from software model estimation.

- + Energy Meter
- + Power Estimation

Top

System Power State: Shutdown

SESSION ID	START TIME	DURATION	STATE	ENTRY REASON	EXIT REASON	% CAPACITY REMAINING AT START
206	2026-02-07 22:48:00	0:00:32	Shutdown	----	----	7%

Detailed Session Information

- + Battery Information
- + System Event Log

Srum Data

Data obtained from the SRUM database. * in Power Estimation means the power value is from energy meter. Otherwise, it is from software model estimation.

- + Energy Meter
- + Power Estimation

Top

System Power State: Active

SESSION ID	START TIME	DURATION	STATE	ENTRY REASON	EXIT REASON	% CAPACITY REMAINING AT START
207	2026-02-07 22:48:32	0:01:08	Active	----	----	99%

Detailed Session Information

- + Battery Information
- + System Event Log

Srum Data

Data obtained from the SRUM database. * in Power Estimation means the power value is from energy meter. Otherwise, it is from software model estimation.

- + Energy Meter
- + Power Estimation

Top

System Power State: Hibernate

SESSION ID	START TIME	DURATION	STATE	ENTRY REASON	EXIT REASON	% CAPACITY REMAINING AT START
208	2026-02-07 22:49:41	0:00:48	Hibernate	Battery	Unknown	3%

Detailed Session Information

- + Battery Information
- + System Event Log

Srum Data

Data obtained from the SRUM database. * in Power Estimation means the power value is from energy meter. Otherwise, it is from software model estimation.

- + Energy Meter
- + Power Estimation

Top

System Power State: Screen Off

SESSION ID	START TIME	DURATION	STATE	ENTRY REASON	EXIT REASON	% CAPACITY REMAINING AT START
209	2026-02-07 22:50:29	0:00:00	Screen Off	Hibernate, or Shutdown	Resume S4 Display Burst	3%

Detailed Session Information

- + Battery Information
- + General
- + System Event Log

This session contains no detailed information about top offenders.

Top

System Power State: Active

SESSION ID	START TIME	DURATION	STATE	ENTRY REASON	EXIT REASON	% CAPACITY REMAINING AT START
210	2026-02-07 22:50:29	0:00:25	Active	----	----	3%

Detailed Session Information

- + Battery Information
- + System Event Log

Srum Data

Data obtained from the SRUM database. * in Power Estimation means the power value is from energy meter. Otherwise, it is from software model estimation.

- + Energy Meter
- + Power Estimation

Top

System Power State: Hybrid Shutdown

SESSION ID	START TIME	DURATION	STATE	ENTRY REASON	EXIT REASON	% CAPACITY REMAINING AT START
211	2026-02-07 22:50:55	4:31:01	Hybrid Shutdown	Application API	Unknown	2%

Detailed Session Information

- + Battery Information
- + System Event Log

Srum Data

Data obtained from the SRUM database. * in Power Estimation means the power value is from energy meter. Otherwise, it is from software model estimation.

- + Energy Meter
- + Power Estimation

Top

System Power State: Screen Off

SESSION ID	START TIME	DURATION	STATE	ENTRY REASON	EXIT REASON	% CAPACITY REMAINING AT START
212	2026-02-08 03:21:56	0:00:00	Screen Off	Hibernate, or Shutdown	Resume S4 Display Burst	2%

Detailed Session Information

- + Battery Information
- + General
- + System Event Log

This session contains no detailed information about top offenders.

Top

System Power State: Active

SESSION ID	START TIME	DURATION	STATE	ENTRY REASON	EXIT REASON	% CAPACITY REMAINING AT START
213	2026-02-08 03:21:56	0:01:11	Active	----	----	2%

Detailed Session Information

- + Battery Information
- + System Event Log

Srum Data

Data obtained from the SRUM database. * in Power Estimation means the power value is from energy meter. Otherwise, it is from software model estimation.

- + Energy Meter

+ Power Estimation

Top

System Power State: Screen Off

SESSION ID	START TIME	DURATION	STATE	ENERGY CHANGE	CHANGE RATE	% LOW POWER STATE TIME	% CAPACITY REMAINING AT START
214	2026-02-08 03:23:08	0:02:08	Screen Off	91 0% of mWh battery	2,547 mW Drain	-	99%

Detailed Session Information

- + Battery Information
- + General
- + Settings
- + System Event Log

Top Offenders

Top 5 Offenders, ranked by active time

NAME	TYPE	% ACTIVE TIME	ACTIVE TIME
No CS Phase	PDC Phase	100%	0:02:08

Session Blockers

- + Audio Activity
- + PDC Phases

SRUM Data

Data obtained from the SRUM database. * in Power Estimation means the power value is from energy meter. Otherwise, it is from software model estimation.

- + Energy Meter
- + Power Estimation

Top

System Power State: Sleep

SESSION ID	START TIME	DURATION	STATE	ENERGY CHANGE	CHANGE RATE	% LOW POWER STATE TIME	% CAPACITY REMAINING AT START
215	2026-02-08 03:25:17	0:11:22	Sleep	228 0% of mWh battery	1,203 mW Drain	SW: 0% -	99%

Detailed Session Information

- + Battery Information
- + General
- + MS Exit Latency [ms]
- + Settings

+ System Event Log

DRIPS Histogram

Percent of time spent in DRIPS bucketed by time interval length



Top Offenders

Top 5 Offenders, ranked by active time

NAME	TYPE	% ACTIVE TIME	ACTIVE TIME
USB xHCI Compliant Host Controller (_SB.PC00.XHCI)	Fx Device	98%	0:11:09
USB xHCI Compliant Host Controller (_SB.PC00.TXHC)	Fx Device	98%	0:11:09
Intel(R) PEG60 - 464D (_SB.PC00.PEG0)	Fx Device	14%	0:01:39
Low Power Phase	PDC Phase	0%	0:00:05
Intel(R) Ethernet Connection (16) I219-LM (_SB.PC00.GLAN)	Fx Device	0%	0:00:04

Session Blockers

- + Audio Activity
- + PDC Phases
- + Activators
- + FX Devices
- + Processors
- + PEP Pre-Vetoes
- + SOC Subsystems

Srum Data

Data obtained from the SRUM database. * in Power Estimation means the power value is from energy meter. Otherwise, it is from software model estimation.

- + Energy Meter
- + Power Estimation



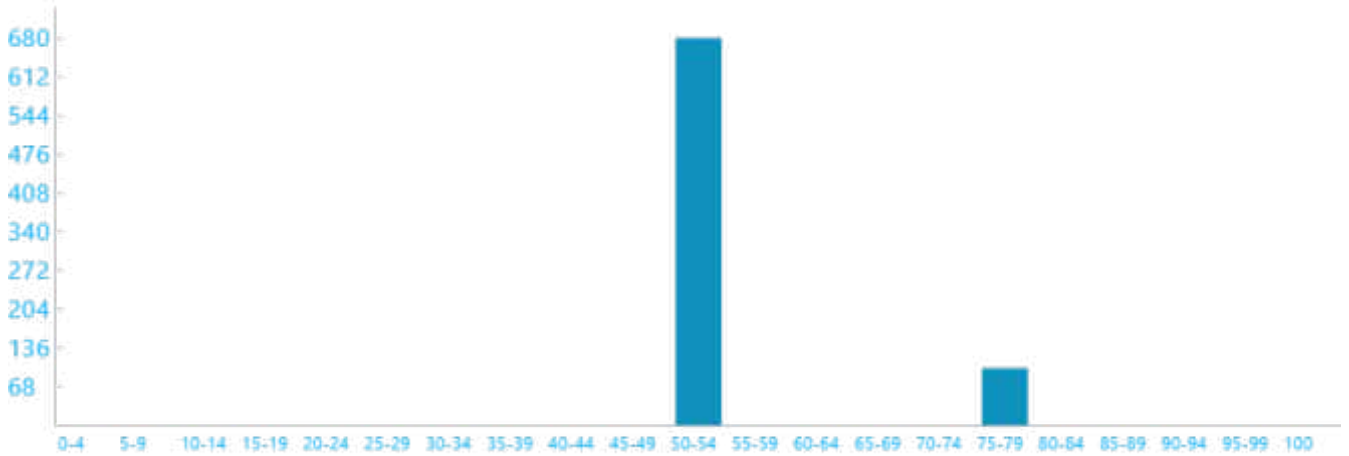
System Power State: Active

SESSION ID	START TIME	DURATION	STATE	ENTRY REASON	EXIT REASON	% CAPACITY REMAINING AT START
216	2026-02-08 03:36:34	0:01:40	Active	MonitorOn	MonitorOff	98%

Detailed Session Information

- + Battery Information
- + System Event Log

Screen Brightness Duration Histogram
Duration in seconds at various screen brightness levels



Search Indexer Data

- + File System Change Events

Srum Data

Data obtained from the SRUM database. * in Power Estimation means the power value is from energy meter. Otherwise, it is from software model estimation.

- + Energy Meter
- + Power Estimation

Top

System Power State: Screen Off

SESSION ID	START TIME	DURATION	STATE	ENERGY CHANGE	CHANGE RATE	% LOW POWER STATE TIME	% CAPACITY REMAINING AT START
217	2026-02-08 03:38:15	0:02:02	Screen Off	61 0% of mWh battery	1,796 mW Drain	-	98%

Detailed Session Information

- + Battery Information
- + General
- + Settings

+ System Event Log

Top Offenders

Top 5 Offenders, ranked by active time

NAME	TYPE	% ACTIVE TIME	ACTIVE TIME
No CS Phase	PDC Phase	100%	0:02:02

Session Blockers

+ Audio Activity

+ PDC Phases

Srum Data

Data obtained from the SRUM database. * in Power Estimation means the power value is from energy meter. Otherwise, it is from software model estimation.

+ Energy Meter

+ Power Estimation

Top

System Power State: Sleep

SESSION ID	START TIME	DURATION	STATE	ENERGY CHANGE	CHANGE RATE	% LOW POWER STATE TIME	% CAPACITY REMAINING AT START
218	2026-02-08 03:40:17	0:21:42	Sleep	426 1% of mWh battery	1,177 mW Drain	SW: 0%	- 98%

Detailed Session Information

+ Battery Information

+ General

+ MS Exit Latency [ms]

+ Settings

+ System Event Log

DRIPS Histogram

Percent of time spent in DRIPS bucketed by time interval length



Top Offenders

Top 5 Offenders, ranked by active time

NAME	TYPE	% ACTIVE TIME	ACTIVE TIME
USB xHCI Compliant Host Controller (_SB.PC00.XHCI)	Fx Device	99%	0:21:30
USB xHCI Compliant Host Controller (_SB.PC00.TXHC)	Fx Device	99%	0:21:30
Intel(R) PEG60 - 464D (_SB.PC00.PEG0)	Fx Device	4%	0:00:57
Low Power Phase	PDC Phase	0%	0:00:05
Intel(R) Ethernet Connection (16) I219-LM (_SB.PC00.GLAN)	Fx Device	0%	0:00:04

Session Blockers

- + Audio Activity
- + PDC Phases
- + Activators
- + FX Devices
- + Processors
- + PEP Pre-Vetoes
- + SOC Subsystems

Srum Data

Data obtained from the SRUM database. * in Power Estimation means the power value is from energy meter. Otherwise, it is from software model estimation.

- + Energy Meter
- + Power Estimation

Top

System Power State: Active

SESSION ID	START TIME	DURATION	STATE	ENTRY REASON	EXIT REASON	% CAPACITY REMAINING AT START
219	2026-02-08 04:01:55	0:01:11	Active	MonitorOn	MonitorOff	97%

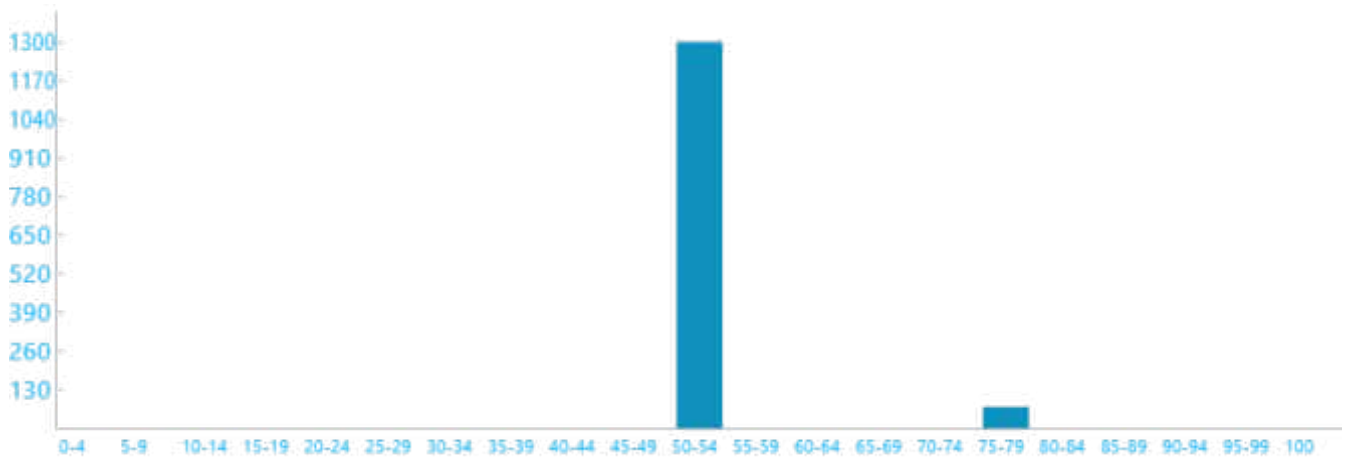
Detailed Session Information

+ Battery Information

+ System Event Log

Screen Brightness Duration Histogram

Duration in seconds at various screen brightness levels



Search Indexer Data

+ File System Change Events

Srum Data

Data obtained from the SRUM database. * in Power Estimation means the power value is from energy meter. Otherwise, it is from software model estimation.

+ Energy Meter

+ Power Estimation

Top

System Power State: Screen Off

SESSION ID	START TIME	DURATION	STATE	ENTRY REASON	EXIT REASON	% CAPACITY REMAINING AT START
220	2026-02-08 04:03:06	0:02:10	Screen Off	Video Idle Timeout	Transition To Sleep	97%

Detailed Session Information

+ Battery Information

+ General

+ System Event Log

Srum Data

Data obtained from the SRUM database. * in Power Estimation means the power value is from energy meter. Otherwise, it is from software model estimation.

+ Energy Meter

+ Power Estimation

This session contains no detailed information about top offenders.

Top

System Power State: Sleep

SESSION ID	START TIME	DURATION	STATE	ENTRY REASON	EXIT REASON	% CAPACITY REMAINING AT START
221	2026-02-08 04:05:17	0:03:07	Sleep	Transition To Sleep	Input Touchpad	97%

Detailed Session Information

- + Battery Information
- + General
- + System Event Log

Srum Data

Data obtained from the SRUM database. * in Power Estimation means the power value is from energy meter. Otherwise, it is from software model estimation.

- + Energy Meter
- + Power Estimation

This session contains no detailed information about top offenders.

Top

System Power State: Active

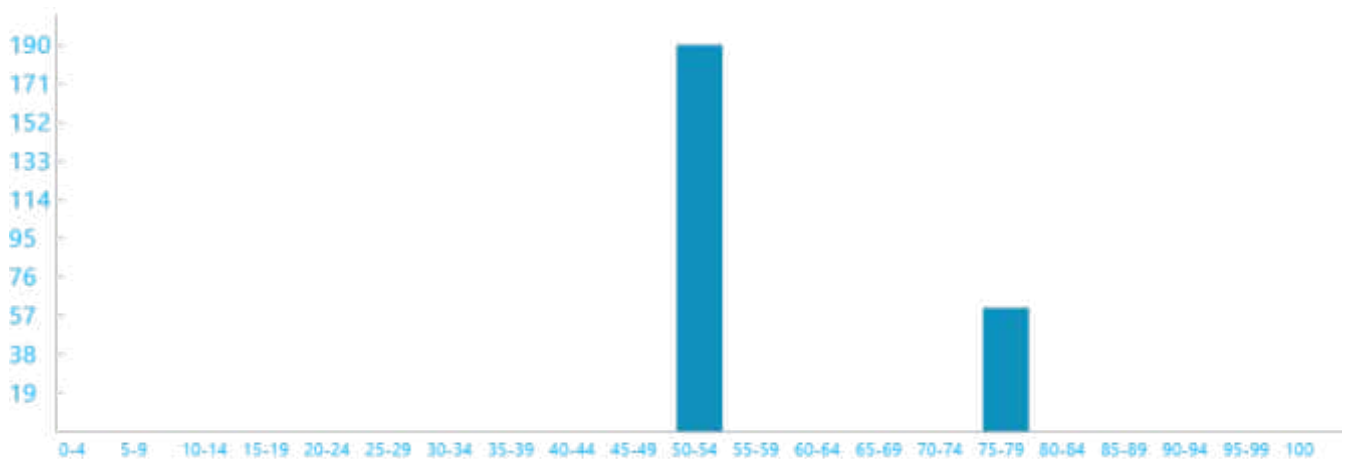
SESSION ID	START TIME	DURATION	STATE	ENTRY REASON	EXIT REASON	% CAPACITY REMAINING AT START
222	2026-02-08 04:08:25	0:01:00	Active	MonitorOn	MonitorOff	96%

Detailed Session Information

- + Battery Information
- + System Event Log

Screen Brightness Duration Histogram

Duration in seconds at various screen brightness levels



Search Indexer Data

- + File System Change Events

Srum Data

Data obtained from the SRUM database. * in Power Estimation means the power value is from energy meter. Otherwise, it is from software model estimation.

- + Energy Meter
- + Power Estimation

Top

System Power State: Screen Off

SESSION ID	START TIME	DURATION	STATE	ENERGY CHANGE	CHANGE RATE	% LOW POWER STATE TIME	% CAPACITY REMAINING AT START
223	2026-02-08 04:09:25	0:02:21	Screen Off	76 0% of mWh battery	1,932 mW Drain	-	96%

Detailed Session Information

- + Battery Information
- + General
- + Settings
- + System Event Log

Top Offenders

Top 5 Offenders, ranked by active time

NAME	TYPE	% ACTIVE TIME	ACTIVE TIME
No CS Phase	PDC Phase	99%	0:02:21

Session Blockers

- + Audio Activity
- + PDC Phases

Srum Data

Data obtained from the SRUM database. * in Power Estimation means the power value is from energy meter. Otherwise, it is from software model estimation.

- + Energy Meter
- + Power Estimation

Top

System Power State: Sleep

SESSION ID	START TIME	DURATION	STATE	ENERGY CHANGE	CHANGE RATE	% LOW POWER STATE TIME	% CAPACITY REMAINING AT START
224	2026-02-08 04:11:47	0:16:29	Sleep	319 1% of mWh battery	1,161 mW Drain	SW: 0%	96%

Detailed Session Information

- + Battery Information
- + General
- + MS Exit Latency [ms]
- + Settings
- + System Event Log

DRIPS Histogram

Percent of time spent in DRIPS bucketed by time interval length



Top Offenders

Top 5 Offenders, ranked by active time

NAME	TYPE	% ACTIVE TIME	ACTIVE TIME
USB xHCI Compliant Host Controller (_SB.PC00.XHCI)	Fx Device	98%	0:16:16
USB xHCI Compliant Host Controller (_SB.PC00.TXHC)	Fx Device	98%	0:16:16
Intel(R) PEG60 - 464D (_SB.PC00.PEG0)	Fx Device	5%	0:00:50
Low Power Phase	PDC Phase	0%	0:00:05
Intel(R) Ethernet Connection (16) I219-LM (_SB.PC00.GLAN)	Fx Device	0%	0:00:04

Session Blockers

- + Audio Activity
- + PDC Phases
- + Activators
- + FX Devices
- + Processors
- + PEP Pre-Vetoes
- + SOC Subsystems

Srum Data

Data obtained from the SRUM database. * in Power Estimation means the power value is from energy meter. Otherwise, it is from software model estimation.

- + Energy Meter
- + Power Estimation

Top

System Power State: Screen Off

SESSION ID	START TIME	DURATION	STATE	ENTRY REASON	EXIT REASON	% CAPACITY REMAINING AT START
225	2026-02-08 04:28:11	0:00:05	Screen Off	Restricted Standby Battery Drain Budget Exceeded	Transition To Sleep	95%

Detailed Session Information

- + Battery Information
- + General
- + System Event Log

SRUM Data

Data obtained from the SRUM database. * in Power Estimation means the power value is from energy meter. Otherwise, it is from software model estimation.

- + Energy Meter
- + Power Estimation

This session contains no detailed information about top offenders.

Top

System Power State: Sleep

SESSION ID	START TIME	DURATION	STATE	ENERGY CHANGE	CHANGE RATE	% LOW POWER STATE TIME	% CAPACITY REMAINING AT START
226	2026-02-08 04:28:21	0:11:15	Sleep	198 0% of mWh battery	1,055 mW Drain	SW: 0%	95%

Detailed Session Information

- + Battery Information
- + General
- + MS Exit Latency [ms]
- + Settings
- + System Event Log

DRIPS Histogram

Percent of time spent in DRIPS bucketed by time interval length



Top Offenders

Top 5 Offenders, ranked by active time

NAME	TYPE	% ACTIVE TIME	ACTIVE TIME
USB xHCI Compliant Host Controller (_SB.PC00.XHCI)	Fx Device	98%	0:11:02
USB xHCI Compliant Host Controller (_SB.PC00.TXHC)	Fx Device	98%	0:11:02
Intel Smart Sound Technology BUS (_SB.PC00.HDAS)	Fx Device	0%	0:00:05
Low Power Phase	PDC Phase	0%	0:00:05
Intel(R) PEG60 - 464D (_SB.PC00.PEG0)	Fx Device	0%	0:00:04

Session Blockers

- + Audio Activity
- + PDC Phases
- + Activators
- + FX Devices
- + Processors
- + PEP Pre-Vetoes
- + SOC Subsystems

SRUM Data

Data obtained from the SRUM database. * in Power Estimation means the power value is from energy meter. Otherwise, it is from software model estimation.

- + Energy Meter
- + Power Estimation

Top

System Power State: Active

SESSION ID	START TIME	DURATION	STATE	ENTRY REASON	EXIT REASON	% CAPACITY REMAINING AT START
227	2026-02-08 04:39:27	0:00:30	Active	----	----	95%

Detailed Session Information

+ Battery Information

+ System Event Log

Srum Data

Data obtained from the SRUM database. * in Power Estimation means the power value is from energy meter. Otherwise, it is from software model estimation.

+ Energy Meter

+ Power Estimation

Top

System Power State: Screen Off

SESSION ID	START TIME	DURATION	STATE	ENTRY REASON	EXIT REASON	% CAPACITY REMAINING AT START
228	2026-02-08 04:39:57	0:02:49	Screen Off	Video Idle Timeout	Transition To Sleep	95%

Detailed Session Information

+ Battery Information

+ General

+ System Event Log

Srum Data

Data obtained from the SRUM database. * in Power Estimation means the power value is from energy meter. Otherwise, it is from software model estimation.

+ Energy Meter

+ Power Estimation

This session contains no detailed information about top offenders.

Top

System Power State: Sleep

SESSION ID	START TIME	DURATION	STATE	ENTRY REASON	EXIT REASON	% CAPACITY REMAINING AT START
229	2026-02-08 04:42:47	0:02:01	Sleep	Transition To Sleep	Input Touchpad	95%

Detailed Session Information

+ Battery Information

+ General

+ System Event Log

Srum Data

Data obtained from the SRUM database. * in Power Estimation means the power value is from energy meter. Otherwise, it is from software model estimation.

+ Energy Meter

+ Power Estimation

This session contains no detailed information about top offenders.

Top

System Power State: Active

SESSION ID	START TIME	DURATION	STATE	ENTRY REASON	EXIT REASON	% CAPACITY REMAINING AT START
230	2026-02-08 04:44:49	0:02:40	Active	----	Unknown	95%

Detailed Session Information

+ Battery Information

+ System Event Log

Srum Data

Data obtained from the SRUM database. * in Power Estimation means the power value is from energy meter. Otherwise, it is from software model estimation.

+ Energy Meter

+ Power Estimation

Top

System Power State: Report Generated

SESSION ID	START TIME	DURATION	STATE	ENTRY REASON	EXIT REASON	% CAPACITY REMAINING AT START
231	2026-02-08 04:47:30	0:00:00	Report Generated	----	----	-

Detailed Session Information

+ Battery Information

Installed Batteries

Information about each currently installed battery

	BATTERY 1
NAME	DELL VXD5725
MANUFACTURER	LG
SERIAL NUMBER	8052
CHEMISTRY	LiP
DESIGN CAPACITY	64007mWh
CAPACITY RATIO	81
CYCLE COUNT	0