

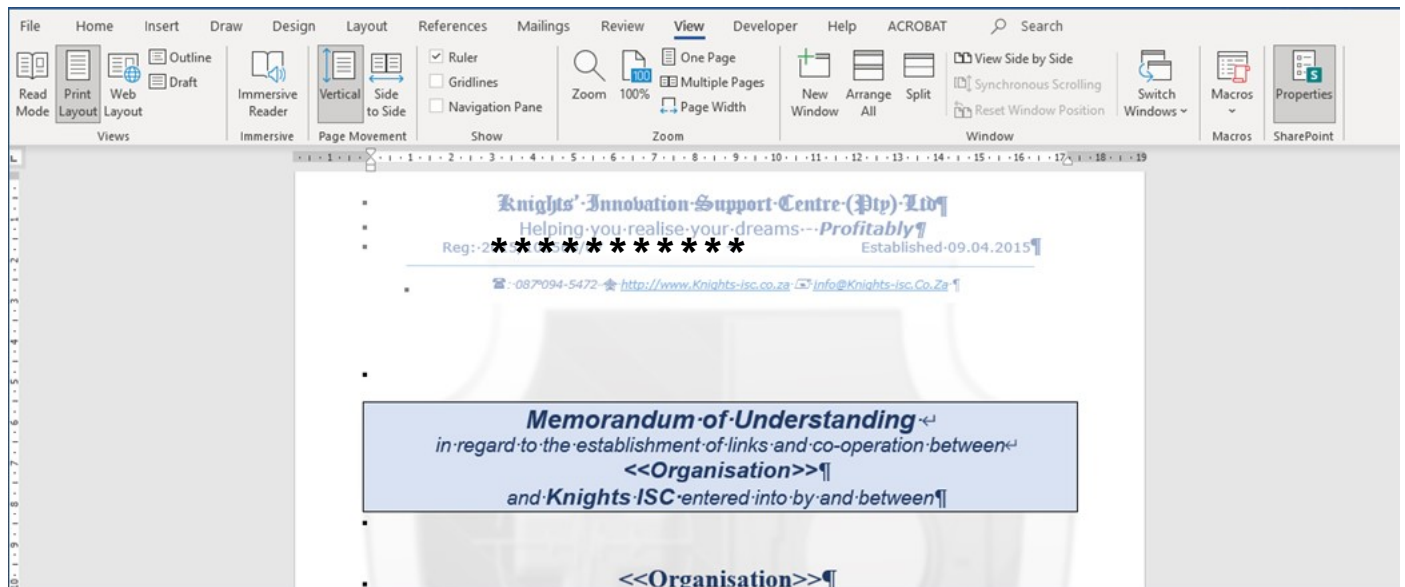
Sean Achim

From: Sean Achim
Sent: Tuesday, 04 May 2021 23:48
To: S*****e D*****s
Cc:
Subject: Please open a support ticket and track this for me.

Tracking: **Recipient** **Read**
S*****e D*****s Read: 2021/05/05 08:25

Support Request:

I've recreated a template for a typical MoU. I need to link this to a SharePoint Document library, which I have – but Word is not allowing me to access the SharePoint Document library properties (see image below)



This is not an isolated problem. This has been raised many times over the last 4 years with Microsoft by many of the community members. Please read my request at the following link:

<https://docs.microsoft.com/en-us/answers/questions/382762/no-sharepoint-properties-found-in-word-365.html>

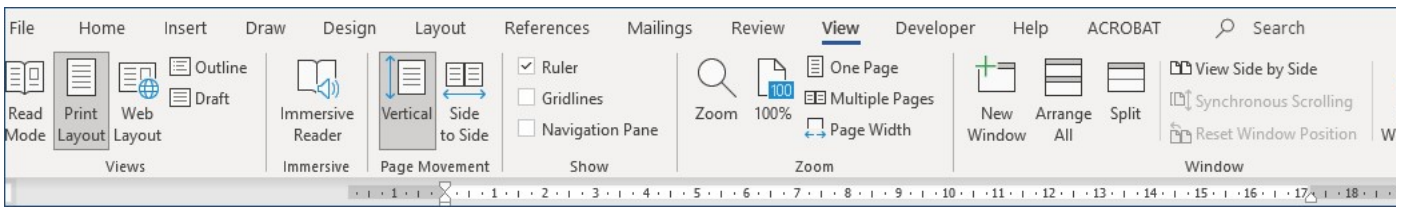
I also reference 1 of the original requests made by Teresa Ives also from the community at the following link:

<https://social.technet.microsoft.com/Forums/en-US/d1d1baf1-c8b8-4d0c-8aa0-0e1488ccb094/no-sharepoint-properties-found?forum=sharepointadmin>

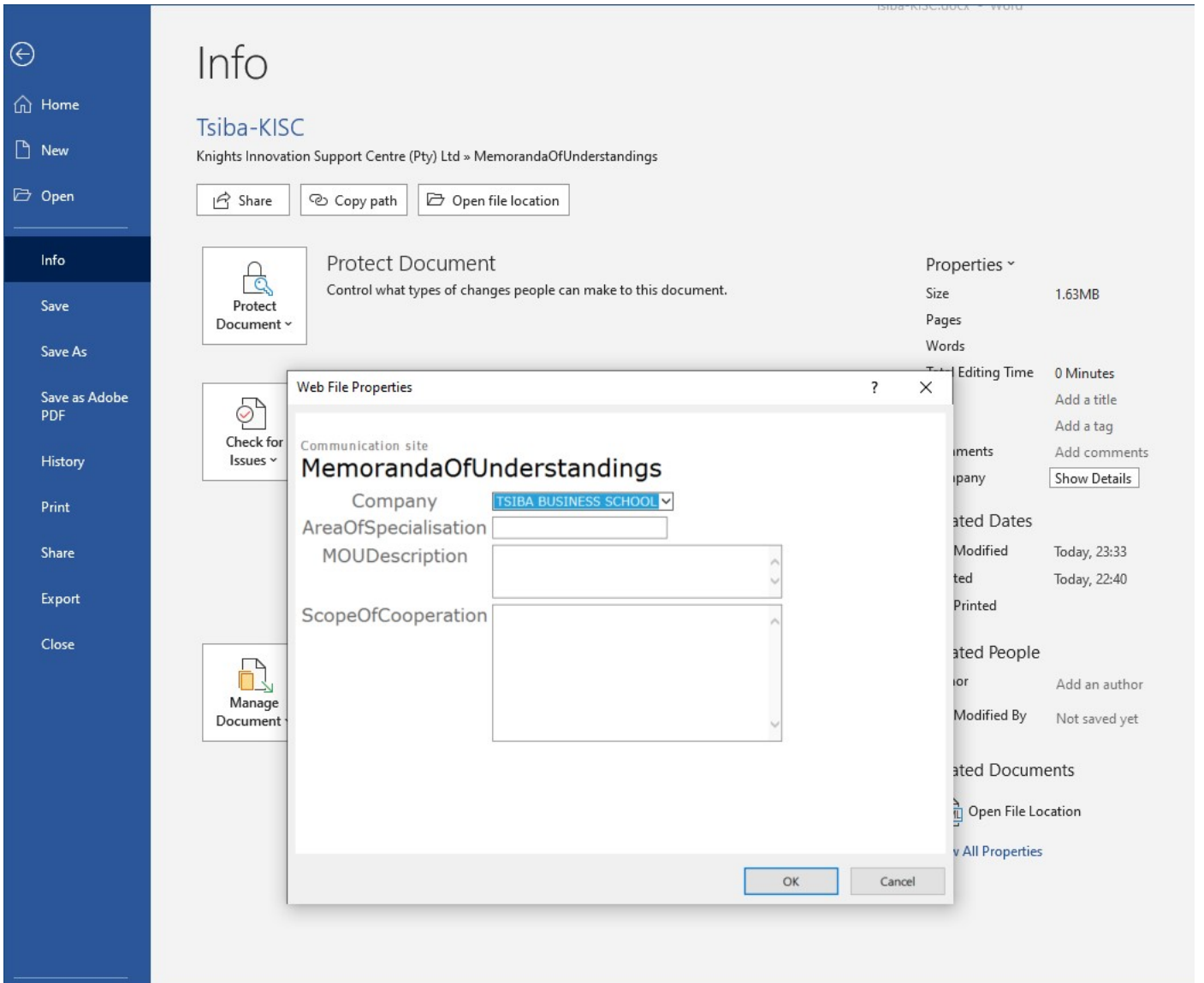
The document library is created here:

<https://knightsisc.sharepoint.com/MemorandaOfUnderstandings/Forms/AllItems.aspx>

You can open the document from there, go to the View menu option and select SharePoint Properties on the far right (see image below)



If you go to the backstage view of Word and click on Info and then click on [Show Details] you will see the fields that can be amended for inclusion in the document. It doesn't show you all of the document properties that are supposed to be available.



As you can see I have several other document properties that should be used throughout this document. These fields change from 1 MOU to the next, but the general layout and majority of terms remains the same. This is a typical legal document that **must** be used as a mail merge with a shared data source such as a SharePoint List or the additional fields of a SharePoint document library.

Column (click to edit)	Type	Used in
AreaOfSpecialisation	Single line of text	Document
Company	Lookup	Document
Company:Address	Lookup	Document
Company:Business Phone	Lookup	Document
Company:City	Lookup	Document
Company:Company	Lookup	Document
Company:CompanyAKA	Lookup	Document
Company:Country/Region	Lookup	Document
Company:E-mail Address	Lookup	Document
Company:First Name	Lookup	Document
Company:Full Name	Lookup	Document
Company:Job Title	Lookup	Document
Company>Last Name	Lookup	Document
Company:Mobile Phone	Lookup	Document
Company:State/Province	Lookup	Document
Company:ZIP/Postal Code	Lookup	Document
Created	Date and Time	Document
Description	Multiple lines of text	
Modified	Date and Time	Document
MOUDescription	Multiple lines of text	Document
Organisation	Single line of text	Document
ScopeOfCooperation	Multiple lines of text	Document

Just because people have stopped using the feature doesn't make it suddenly less relevant – especially since the reason they have probably stopped using it is because Microsoft's development team have forgotten to keep the feature in the next version.

I want this solution working because there are many, many examples of how this can be used.

This allows me to use Word to complete practically every type of form imaginable and then link it into a Workflow process.

I've tried to create the document from within the SharePoint document library directly as well as from a blank document. To no Avail.

Once I've found a solution I will need to post the answer into the community as well.

This is just so frustrating, irritating, upsetting. Especially since it has to be taking up unnecessary time leading up to midnight when I should be doing something of value.

Regards

Séan Achim