

Submission to: <https://learn.microsoft.com/en-us/answers/questions/ask/#tag-input>

Title: What is happening?: Web Site gen this error: net framwork 4.8 xsd Failed to generate code. Exception of type 'System.Data.Design.InternalException' was thrown. Whereas Web App does not.

Error in Visual Studio 2022: 'System.Data.Design.InternalException' when generating code from .XSD in ASP.NET Framework 4.8 Web Site, and Web App does not.

Tags: ASP.NET

Details:

Asp.net framework 4.8 NEW VB Web Forms Site generates this error: net framwork 4.8 xsd

Failed to generate code. Exception of type 'System.Data.Design.InternalException' was thrown.

This occurs after creating the .XSD file in the designer, and adding a DataTable with as simple stored procedure.

Asp.net framework 4.8 NEW VB Web Forms Application does not throw an error after a DataTable with as simple stored procedure.

To Reproduce Use:

- Microsoft Visual Studio Enterprise 2022 (64-bit) - Current Version 17.12.4
- ASP.NET Framework 4.8
- Telerik VB Web Forms Site

Attached is the write up and screenshots showing how to recreate the issue.

AI Generated rewrite:

Title

Error in ASP.NET Framework 4.8 XSD Code Generation

Details

An ASP.NET Framework 4.8 VB Web Forms Site is generating the following error:

Failed to generate code. Exception of type 'System.Data.Design.InternalException' was thrown.

This error occurs after creating the .XSD file in the designer and adding a DataTable with a simple stored procedure.

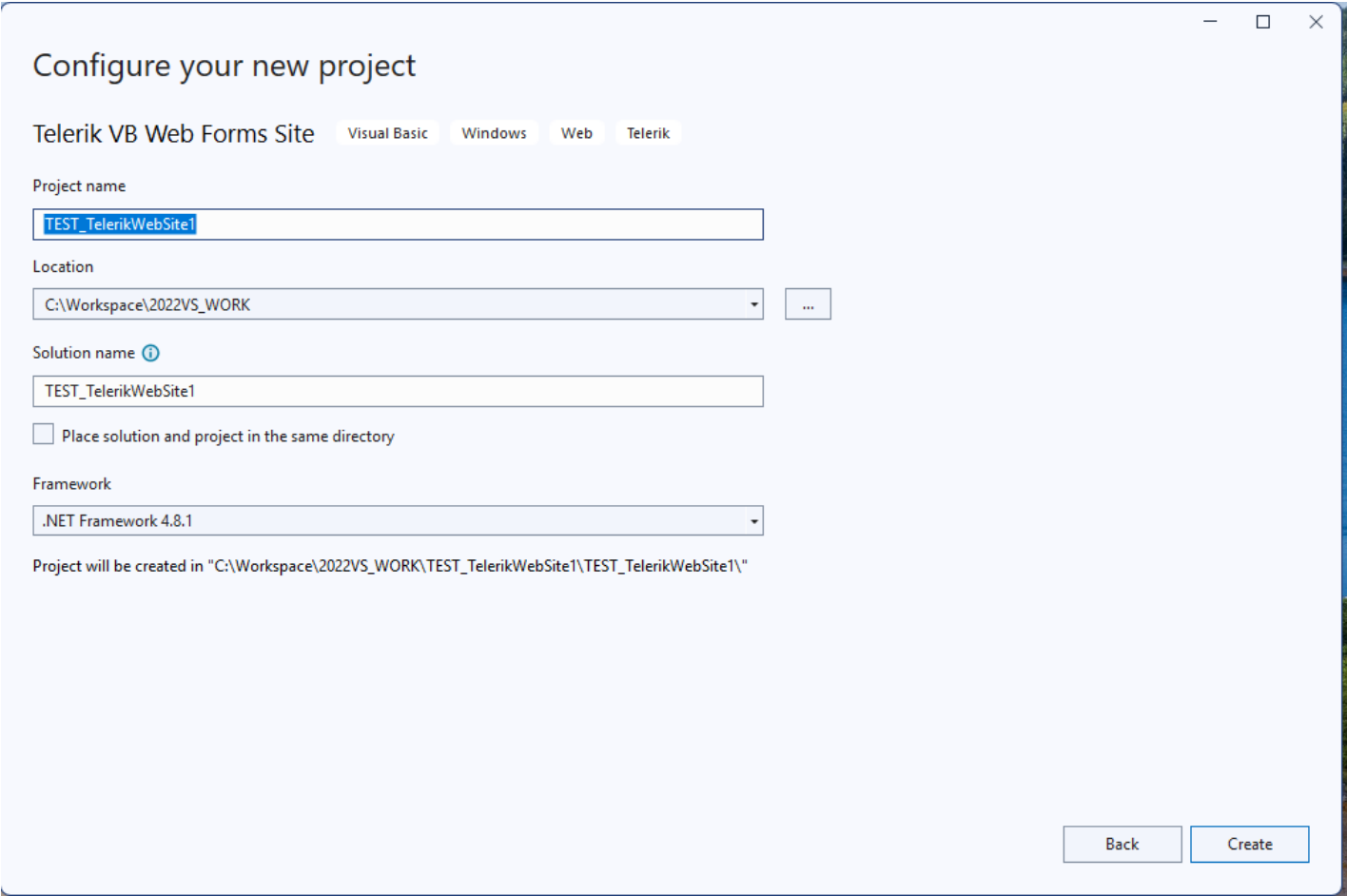
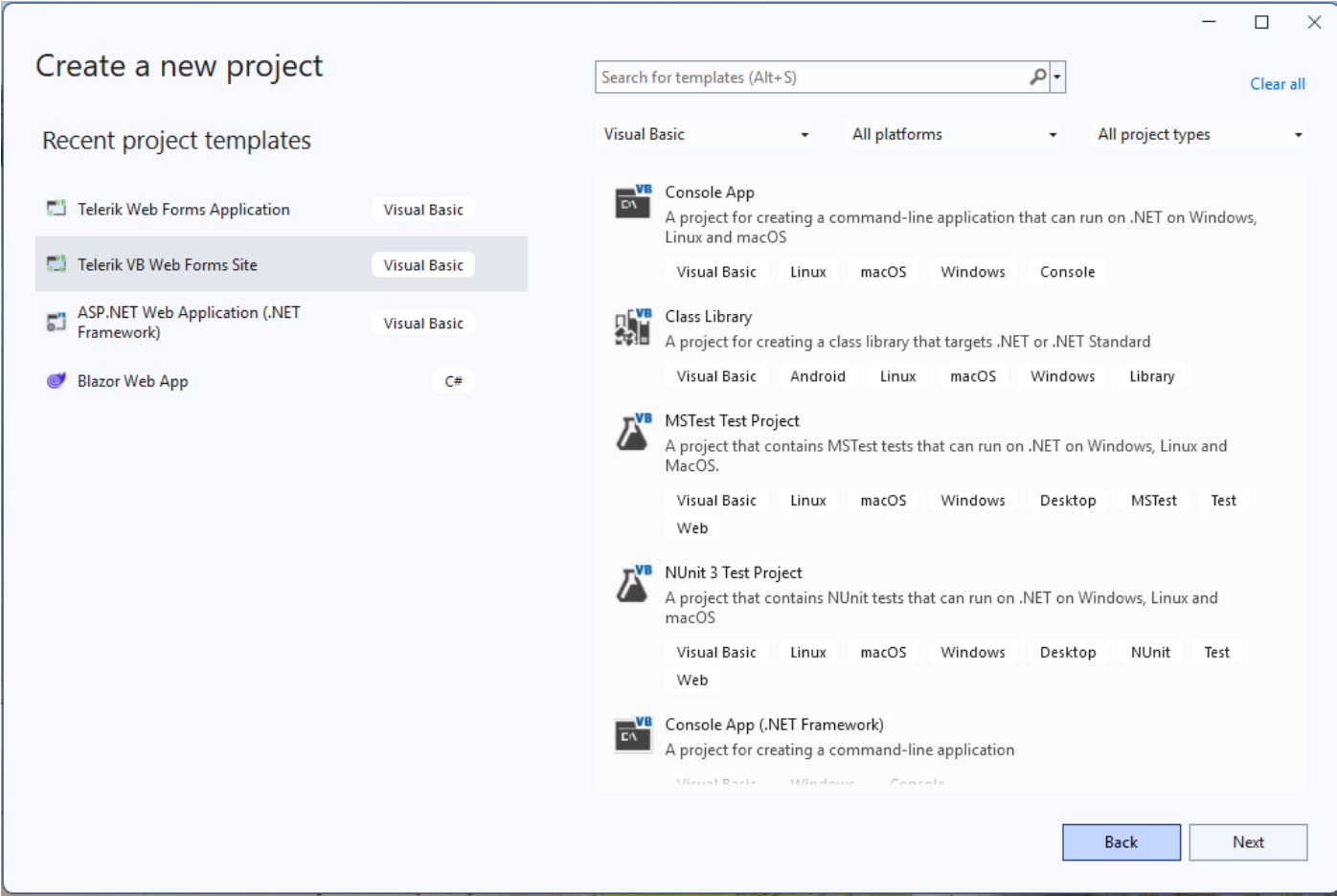
In contrast, an ASP.NET Framework 4.8 VB Web Forms Application does not show this error when performing the same operation.

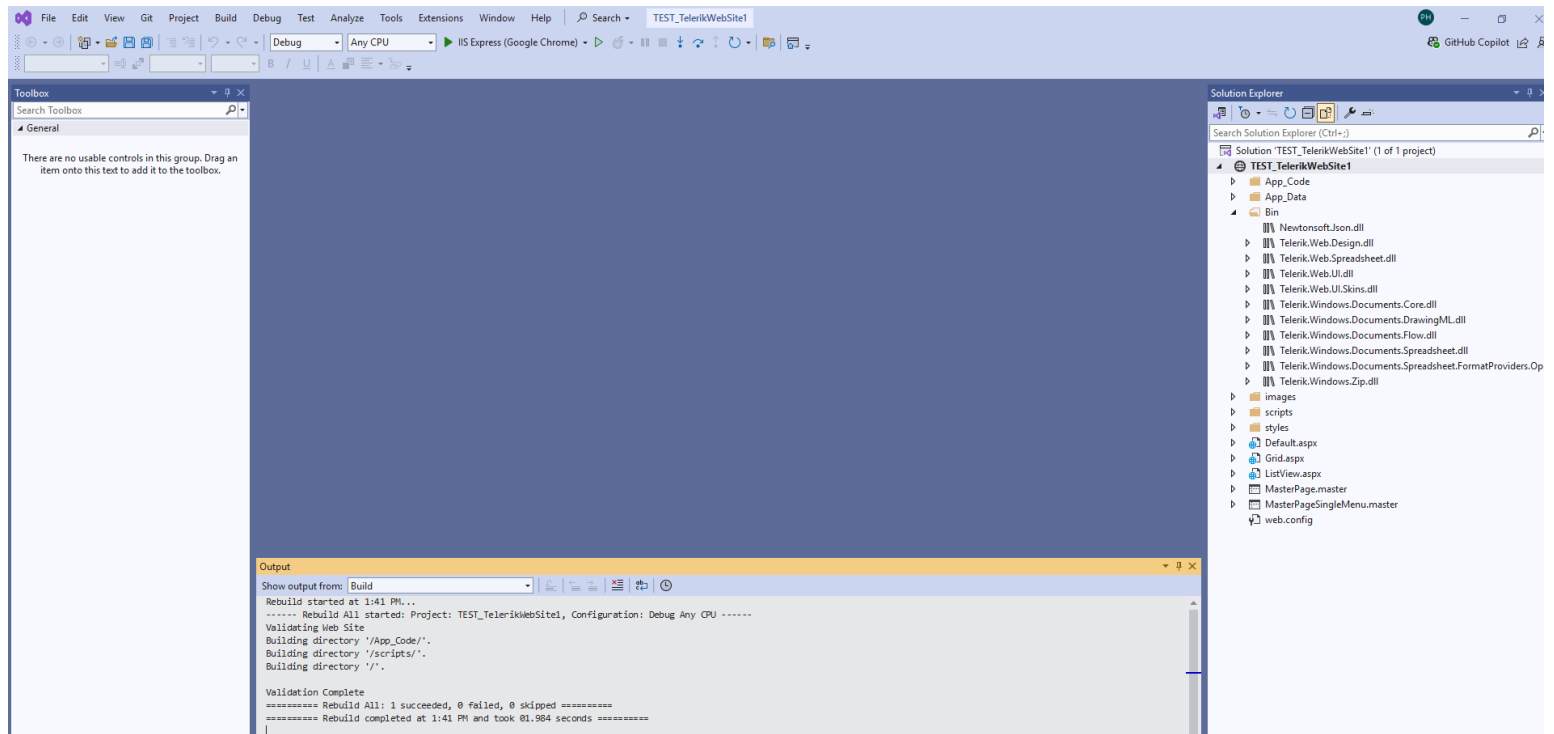
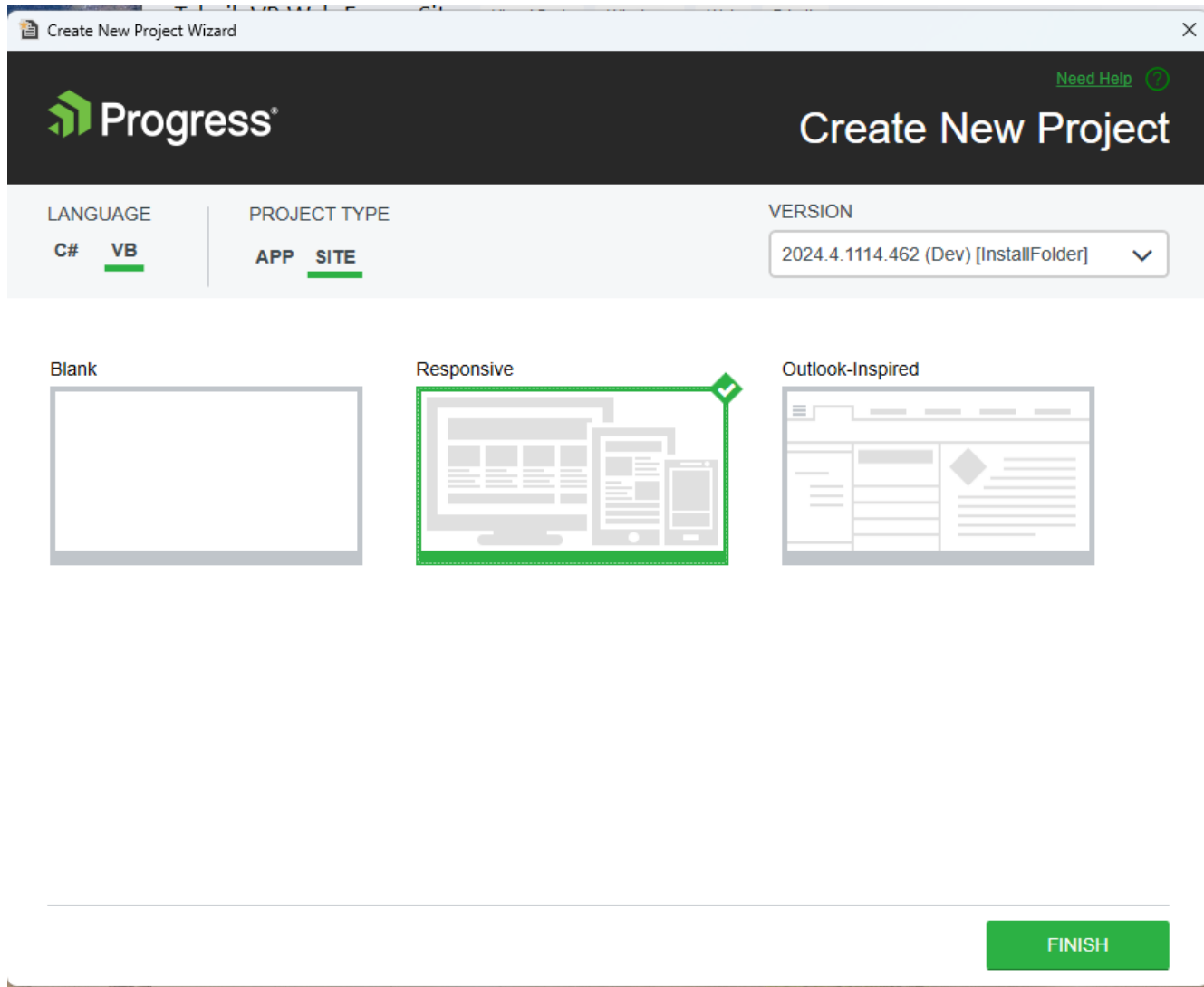
To reproduce the issue, the following environment is used:

- Microsoft Visual Studio Enterprise 2022 (64-bit) - Current Version 17.12.4
 - Telerik VB Web Forms Site
-

Attached is the documentation and screenshots detailing how to recreate the issue.

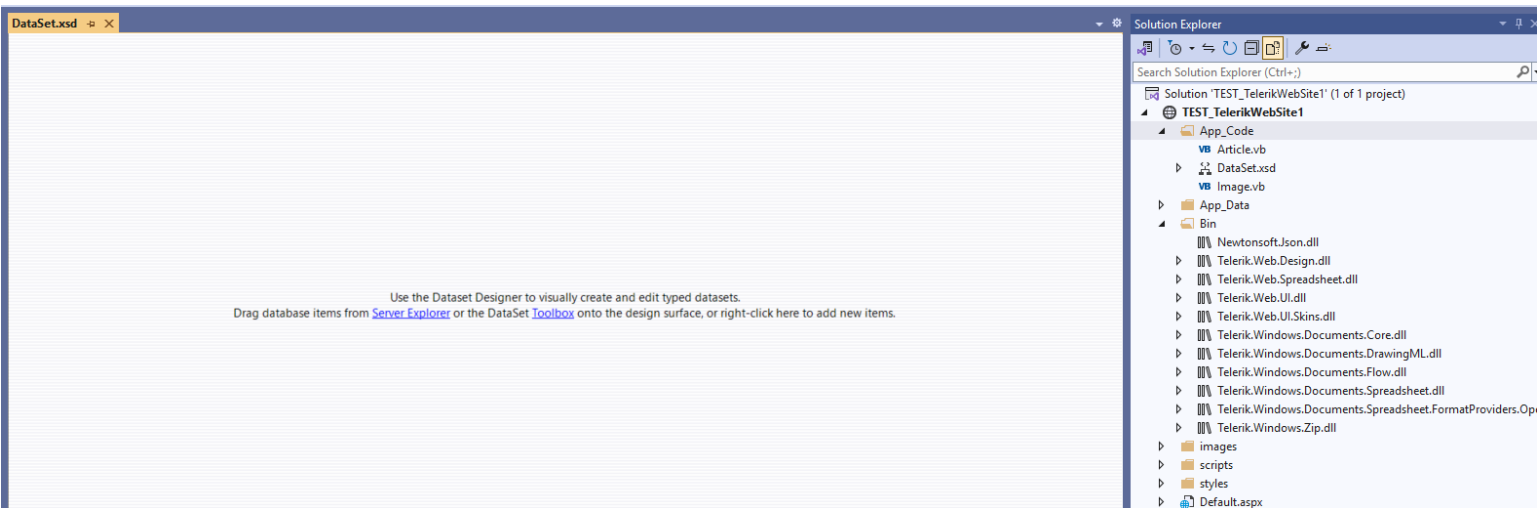
Steps to reproduce error in Asp.net framework 4.8 NEW VB Web Forms Site generates this error: net framwork 4.8 xsd ***Failed to generate code. Exception of type 'System.Data.Design.InternalException' was thrown.***



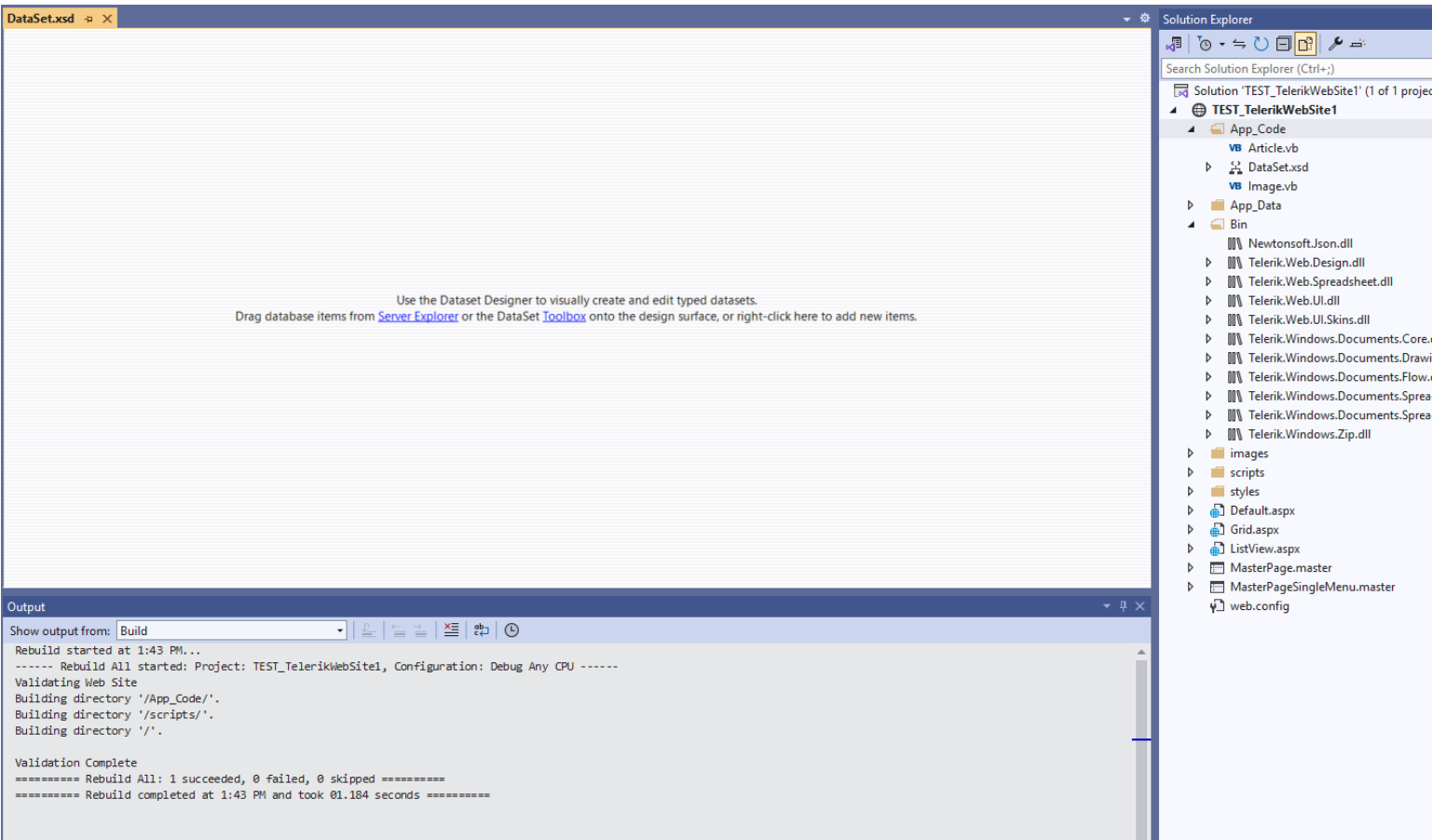


Compiles and runs.

Add new DataSet to the App_Code directory



Rebuild. No Errors.



In Web.Config: AddConnectionString to AdventureWorks

```
web.config* DataSet.xsd
1  <?xml version="1.0"?>
2  <configuration>
3  <appSettings>
4      <add key="Telerik.Skin" value="Bootstrap"/>
5      <add key="Telerik.ScriptManager.TelerikCdn" value="Disabled"/>
6      <add key="Telerik.StyleSheetManager.TelerikCdn" value="Disabled"/>
7      <add key="Telerik.Web.UI.RenderMode" value="lightweight"/>
8  </appSettings>
9
10 <connectionStrings>
11     <!-- Local -->
12     <add name="AdventureWorksConnectionString" connectionString="Data Source=pine\pine2019;Initial
        Catalog=AdventureWorks;Integrated Security=True;Encrypt=False" providerName="System.Data.SqlClient" />
13 </connectionStrings>
14
15 <system.web>
16     <compilation debug="true" strict="false" explicit="true" targetFramework="4.8.1"/>
17     <httpRuntime targetFramework="4.8.1"/>
18     <pages>
19         <controls>
20             <add tagPrefix="telerik" namespace="Telerik.Web.UI" assembly="Telerik.Web.UI"/>
21         </controls>
22     </pages>
```

Add AdventureWorks.Contacts_Select -- MS SQL Stored Procedure to DataSet

```
USE [AdventureWorks]
```

```
GO
```

```
/***** Object: StoredProcedure [dbo].[Contacts_Select]  Script Date: 1/28/2025 1:47:04 PM *****/
```

```
SET ANSI_NULLS ON
```

```
GO
```

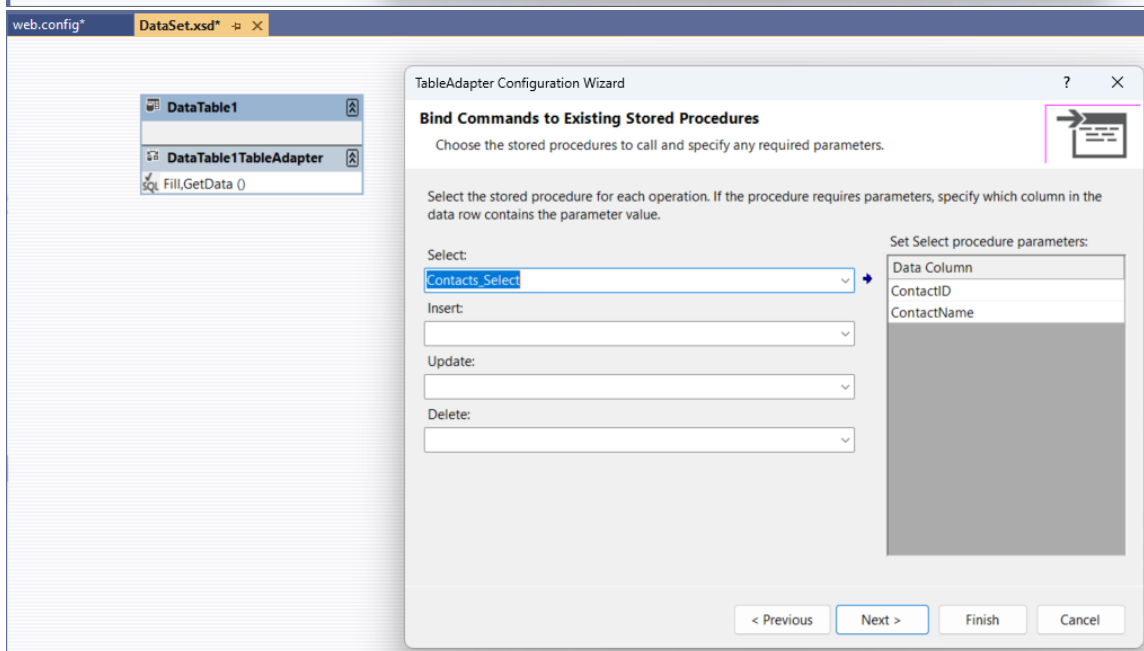
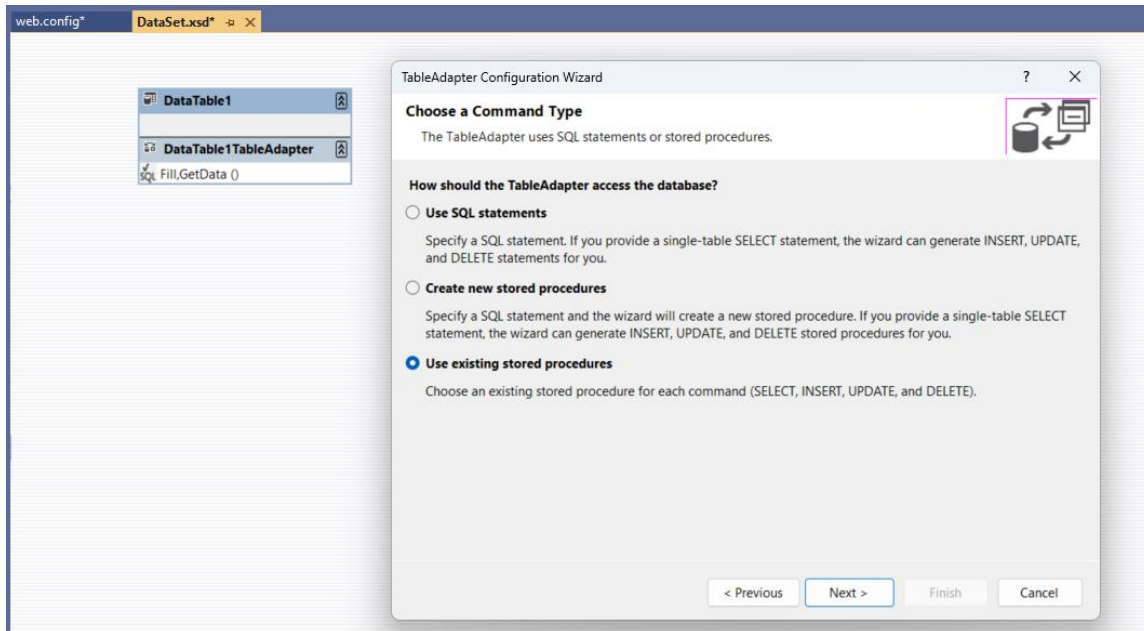
```
SET QUOTED_IDENTIFIER ON
```

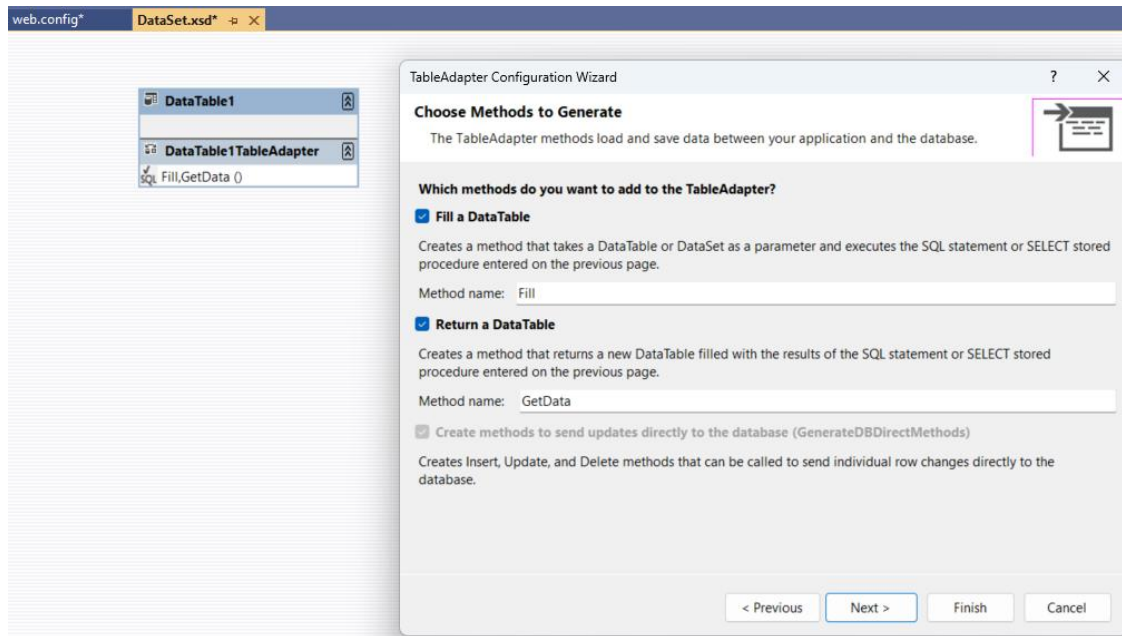
```
GO
```

```
ALTER PROCEDURE [dbo].[Contacts_Select]
```

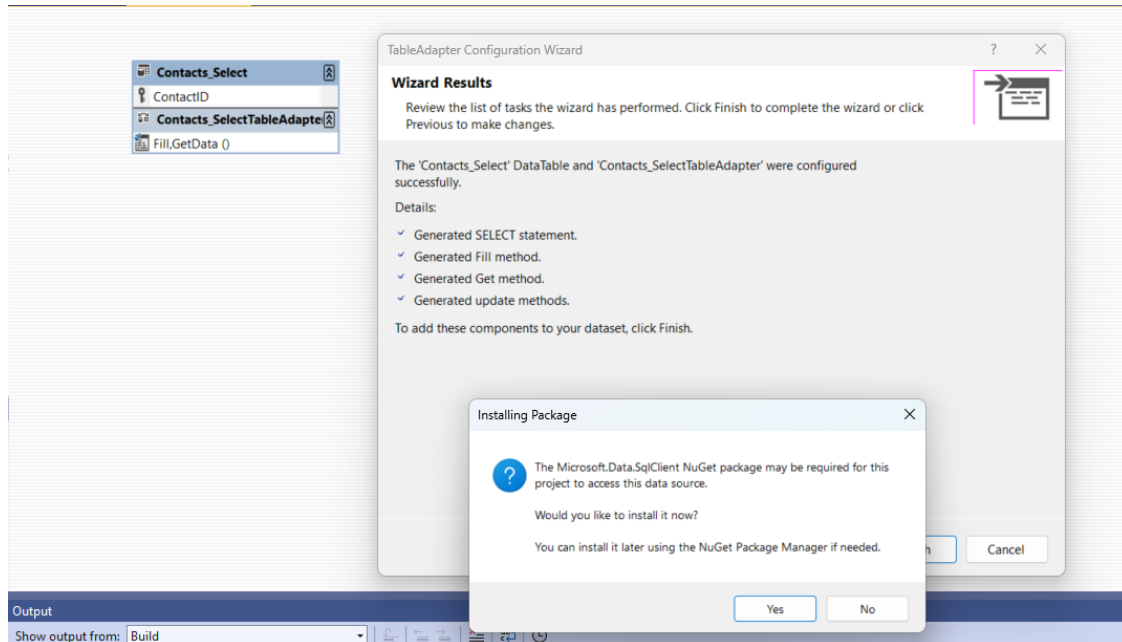
```
AS
```

```
SELECT [ContactID],[ContactName] FROM [Contact]
```





Click Finish.



Select YES.

Rebuild.

Rebuild ERROR:

Rebuild started at 1:58 PM...

----- Rebuild All started: Project: TEST_TelerikWebSite1, Configuration: Debug Any CPU -----

Validating Web Site

Building directory '/App_Code/'.

C:\Workspace\2022VS_WORK\TEST_TelerikWebSite1\TEST_TelerikWebSite1\App_Code\DataSet.xsd(1): Build (web):

Failed to generate code. Exception of type 'System.Data.Design.InternalException' was thrown.

Validation Complete

===== Rebuild All: 0 succeeded, 1 failed, 0 skipped =====

===== Rebuild completed at 1:58 PM and took 03.611 seconds =====

The screenshot shows a Visual Studio IDE with two main panes. The top pane displays a schema diagram for 'DataSet.xsd'. It contains two components: 'Contacts_Select' and 'Contacts_SelectTableAdapter'. 'Contacts_Select' has two fields: 'ContactID' (marked as a key) and 'ContactName'. 'Contacts_SelectTableAdapter' is associated with 'Contacts_Select ()'. The bottom pane is the 'Output' window, showing the results of a rebuild operation. It indicates that the build started at 2:01 PM and failed due to a 'System.Data.Design.InternalException' thrown while building the web site. The output also shows that validation was complete and the build took 00.408 seconds.

DataSet.xsd web.config

Contacts_Select

- ContactID
- ContactName

Contacts_SelectTableAdapter

- Contacts_Select ()

Output

Show output from: Build

Build started at 2:01 PM...

----- Build started: Project: AAATelerikWebSite1, Configuration: Debug Any CPU -----

Validating Web Site

C:\Workspace\2022VS_WORK\AAATelerikWebSite1\AAATelerikWebSite1\App_Code\DataSet.xsd(1): Build (web): Failed to generate code. Exception of type 'System.Data.Design.InternalException' was thrown.

Validation Complete

===== Build: 0 succeeded or up-to-date, 1 failed, 0 skipped =====

===== Build completed at 2:01 PM and took 00.408 seconds =====

Removed Dataset.xsd

Created a TessAppWebsiteDAL.vb Class

Default.aspx ▾ TESTAppWebSiteDAL.vb ▾ Grid.aspx ▾ Default_ORIGINAL.aspx ▾ web.config ▾

1_App_Code ▾ TESTAppWebSiteDAL ▾ DT ▾

```

1 Imports System.Data
2 Imports Microsoft.VisualBasic
3 Imports System.Data.SqlClient
4
5 0 references
6 Public Class TESTAppWebSiteDAL
7     Private Const LengthOfTimeOut As Integer = 120 'Changed from 60 on 7/28/02 -- PAH
8     Private ErrorMsg As String
9     Private ConnectStr As String
10    Private DT As DataTable
11
12    Private UserName As String
13    Private LoginCode As String
14    Const SQLConnectionName As String = "AdventureWorksConnectionString"
15    0 references
16    Public Function Contacts_Select() As DataTable
17        Dim SPROCName As String = "Contacts_Select"
18        Dim sdc As SqlCommand
19        Dim sda As SqlDataAdapter
20        Dim tb As New DataTable(SPROCName)
21        'ALTER PROCEDURE [dbo].[Contacts_Select]
22        Try
23            Dim SQLConnectionString As String = System.Configuration.ConfigurationManager.ConnectionStrings
24                (SQLConnectionName).ToString
25            ConnectStr = SQLConnectionString
26            Dim dataConn As New SqlConnection
27            dataConn.ConnectionString = SQLConnectionString
28            dataConn.Open()
29
30            sdc = New SqlCommand(SPROCName, dataConn)
31            sdc.CommandTimeout = LengthOfTimeOut
32            sdc.CommandType = CommandType.StoredProcedure
33            sda = New SqlDataAdapter(sdc)
34            sda.Fill(tb)
35            dataConn.Close()
36            dataConn = Nothing
37        Catch ex As Exception
38            ErrorMsg = ErrorMsg & vbCrLf &
39                "Message --- From " + SPROCName + ", " & vbCrLf & ex.Message
40        End Try
41        Return tb
42    End Function
43 End Class

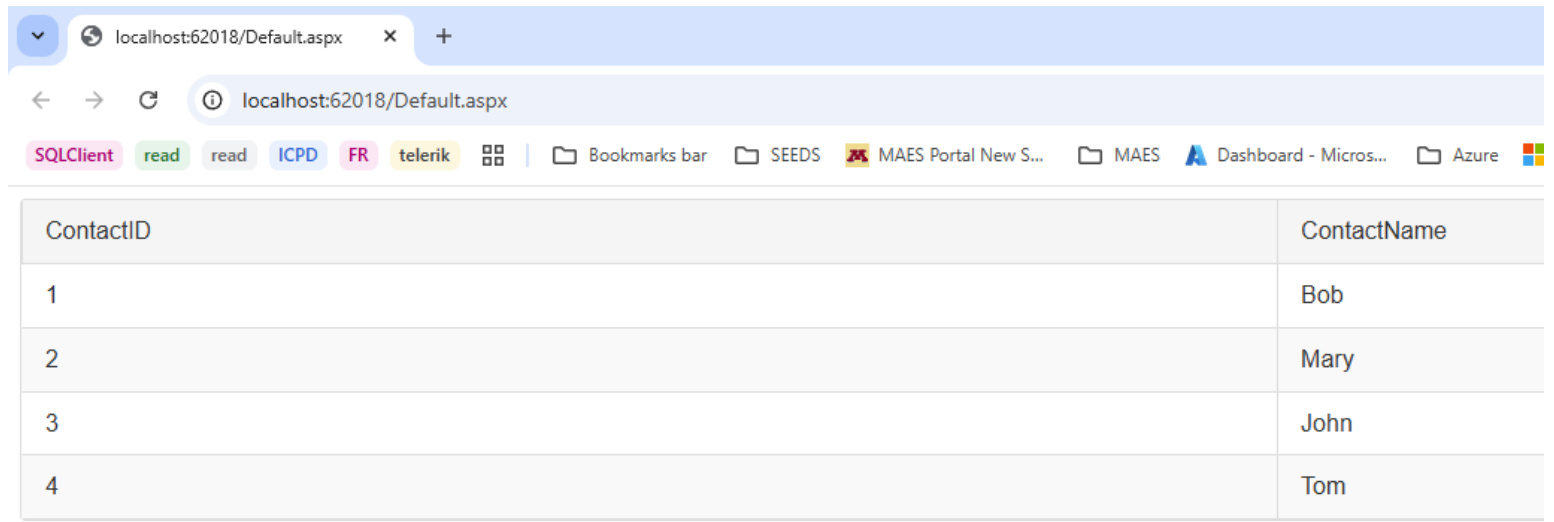
```

Created a new Default.aspx and added RadGrid

```
TESTAppWebSiteDAL.vb | Default.aspx.vb | Default.aspx | web.config
1  <%@ Page Language="VB" AutoEventWireup="false" CodeFile="Default.aspx.vb" Inherits="_Default" %>
2
3  <!DOCTYPE html>
4
5  <html xmlns="http://www.w3.org/1999/xhtml">
6  <head runat="server">
7      <title></title>
8  </head>
9  <body>
10     <form id="form1" runat="server">
11         <telerik:RadScriptManager ID="RadScriptManager1" runat="server">
12             <Scripts>
13                 <asp:ScriptReference Assembly="Telerik.Web.UI" Name="Telerik.Web.UI.Common.Core.js">
14                 </asp:ScriptReference>
15                 <asp:ScriptReference Assembly="Telerik.Web.UI" Name="Telerik.Web.UI.Common.jQuery.js">
16                 </asp:ScriptReference>
17                 <asp:ScriptReference Assembly="Telerik.Web.UI" Name="Telerik.Web.UI.Common.jQueryInclude.js">
18                 </asp:ScriptReference>
19             </Scripts>
20         </telerik:RadScriptManager>
21         <div>
22             <telerik:RadGrid ID="RadGrid1" runat="server">
23                 <GroupingSettings CollapseAllTooltip="Collapse all groups"></GroupingSettings>
24                 <MasterTableView AutoGenerateColumns="False" DataKeyNames="ContactID">
25                     <RowIndicatorColumn ShowNoSortIcon="False"></RowIndicatorColumn>
26                     <ExpandCollapseColumn ShowNoSortIcon="False"></ExpandCollapseColumn>
27                     <Columns>
28                         <telerik:GridBoundColumn DataField="ContactID" DataType="System.Int32" FilterControlAltText="Filter ContactID column" HeaderText="ContactID"
29                             ReadOnly="True" ShowNoSortIcon="False" SortExpression="ContactID" UniqueName="ContactID">
30                         </telerik:GridBoundColumn>
31                         <telerik:GridBoundColumn DataField="ContactName" FilterControlAltText="Filter ContactName column" HeaderText="ContactName"
32                             ShowNoSortIcon="False" SortExpression="ContactName" UniqueName="ContactName">
33                         </telerik:GridBoundColumn>
34                     </Columns>
35                 </MasterTableView>
36             </telerik:RadGrid>
37             <asp:SqlDataSource ID="SqlDataSource1" runat="server" ConnectionString="<%= $ConnectionString:AdventureWorksConnectionString %>"
38                 SelectCommand="Contacts_Select" SelectCommandType="StoredProcedure"></asp:SqlDataSource>
39         </div>
40     </form>
41 </body>
42 </html>
```

Default.aspx.vb Code to fill RadGrid1

```
TESTAppWebSiteDAL.vb | Default.aspx.vb | Default.aspx | web.config
5_Default.aspx | _Default | LoadDataForRadGrid1
1 Imports System.Data
2
3 Partial Class _Default
4     Inherits System.Web.UI.Page
5
6     Public Sub Page_Load(sender As Object, e As System.EventArgs) Handles Me.Load
7         If Not IsPostBack Then
8             LoadDataForRadGrid1()
9         End If
10    End Sub
11
12 Private Sub LoadDataForRadGrid1()
13     'Dim xTable As DataTable = Nothing
14     'xTable = FillContacts_Select()
15     RadGrid1.DataSource = FillContacts_Select()
16 End Sub
17
18 Private Function FillContacts_Select() As DataTable
19     Dim tDAL As TESTAppWebSiteDAL = New TESTAppWebSiteDAL
20     Dim xTable As DataTable = tDAL.Contacts_Select()
21     Return xTable
22 End Function
23 End Class
```



The image shows a web browser window with the address bar displaying 'localhost:62018/Default.aspx'. The browser's toolbar includes navigation buttons (back, forward, refresh) and a search bar. Below the toolbar, there are several tabs or extensions: 'SQLClient', 'read', 'read', 'ICPD', 'FR', 'telerik', 'Bookmarks bar', 'SEEDS', 'MAES Portal New S...', 'MAES', 'Dashboard - Micros...', and 'Azure'. The main content area of the browser displays a table with two columns: 'ContactID' and 'ContactName'. The table contains four rows of data.

ContactID	ContactName
1	Bob
2	Mary
3	John
4	Tom

Runs. Proves that the `ConnectionString` is correctly formatted connecting with MS SQL database.

What is wrong with the ASP.NET Framework website `Dataset.xsd`??