

IBM MQ Installation in windows

Install IBM MQ,


IBM MQ V9.3 Setup (Evaluation Copy) X

Setup Type


Choose the setup type that best suits your needs.

Please Select a Setup type:


☐ **Typical**

 IBM MQ will be installed with the most common features. Recommended for new users.

☐ **Compact**

 Installs the minimum features you need to run IBM MQ.

☒ **Custom**

 Choose a uniquely identifiable installation name, the IBM MQ features you want installed and where they will be installed. Recommended for advanced users.

InstallShield

< Back Next > Cancel

IBM MQ V9.3 Setup (Evaluation Copy) X

Installation Details

Define the installation details

Change the following fields to represent the details to be used for this installation, and click Next to proceed

Installation Name:

☒ Make this the primary installation

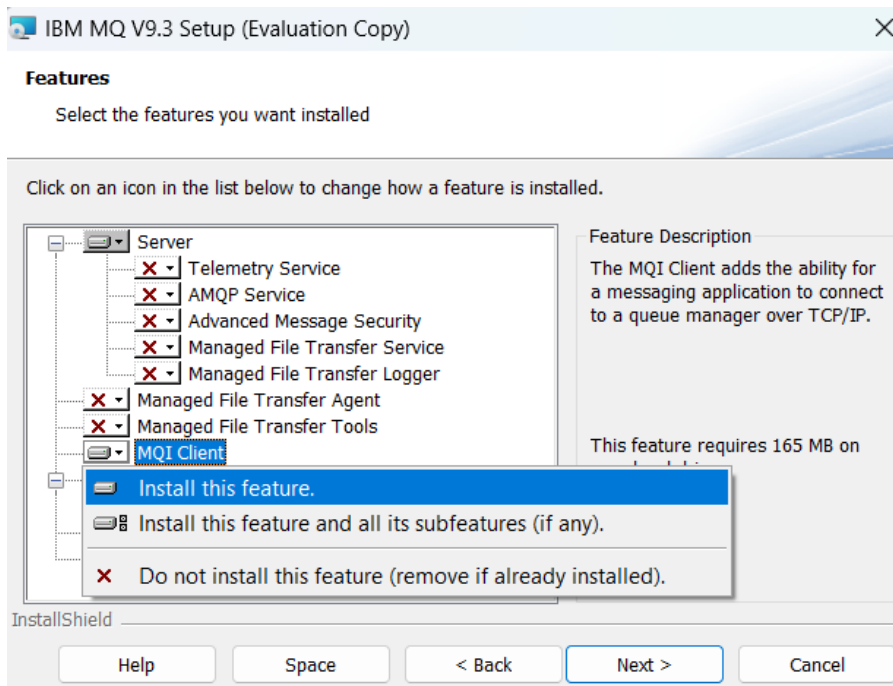
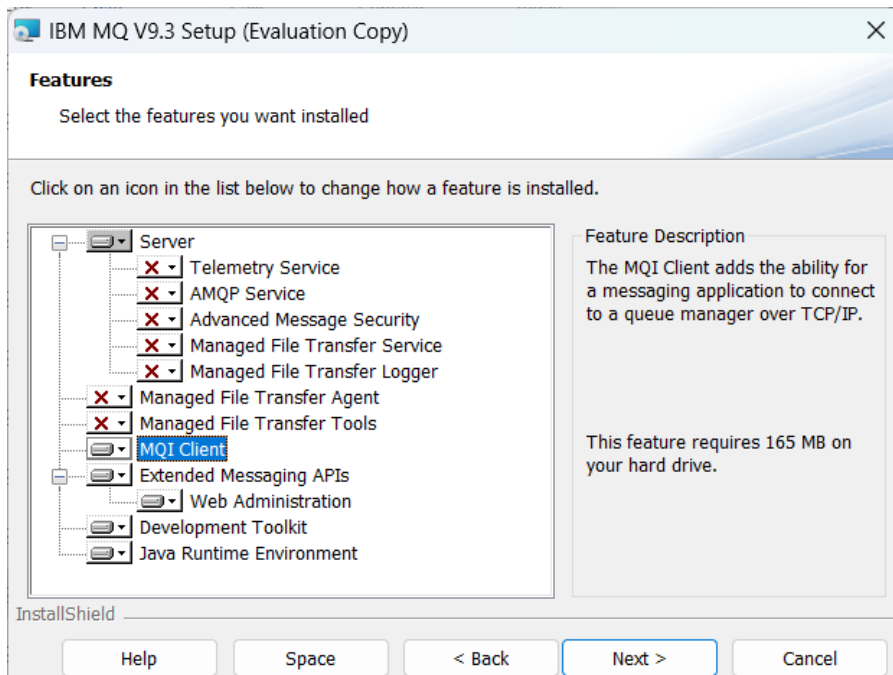
Installation Description:

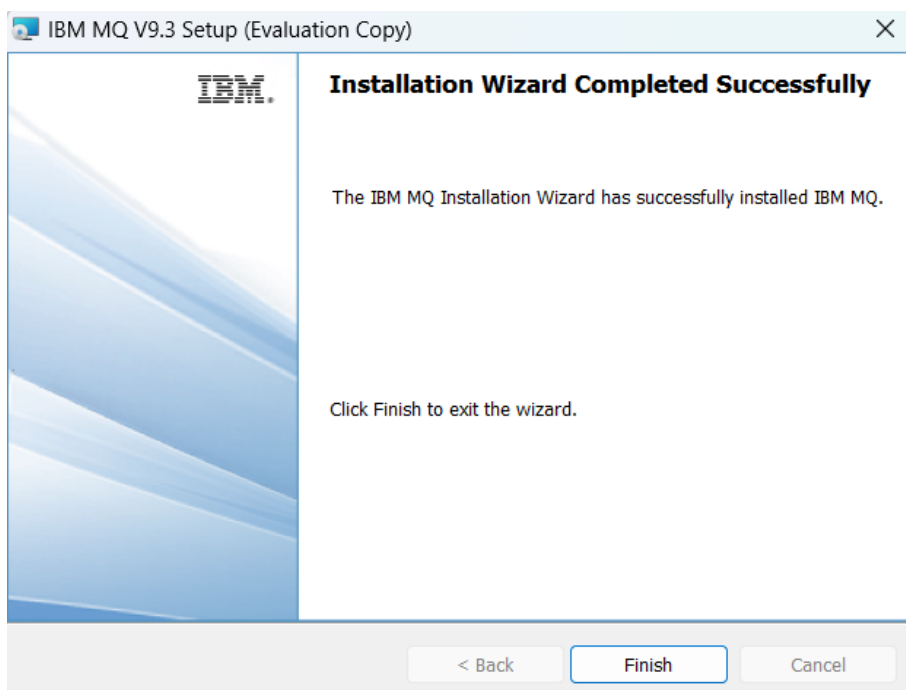
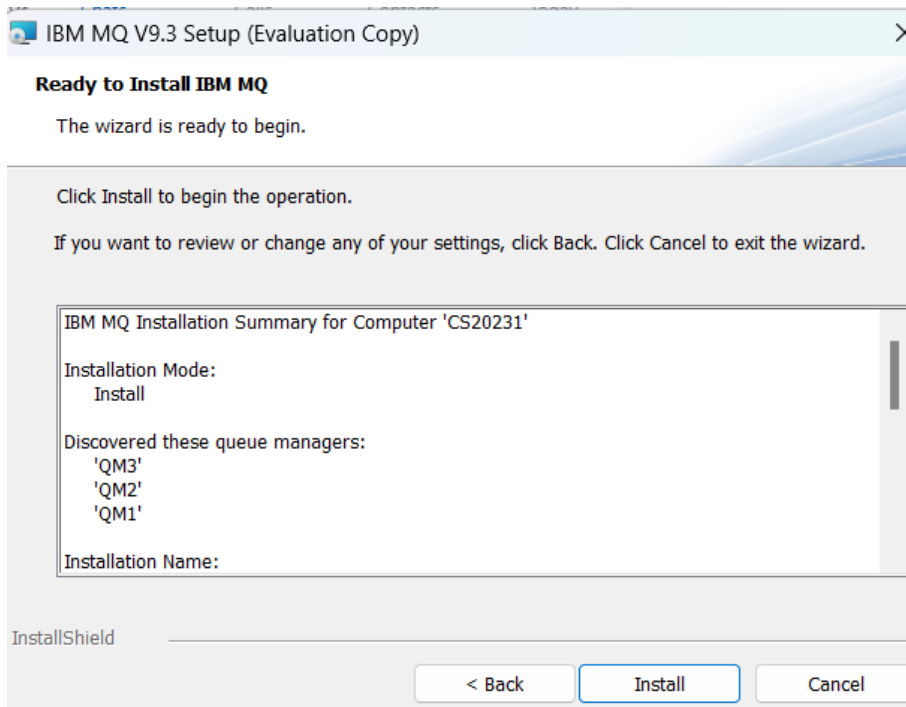
Installation folder for program files

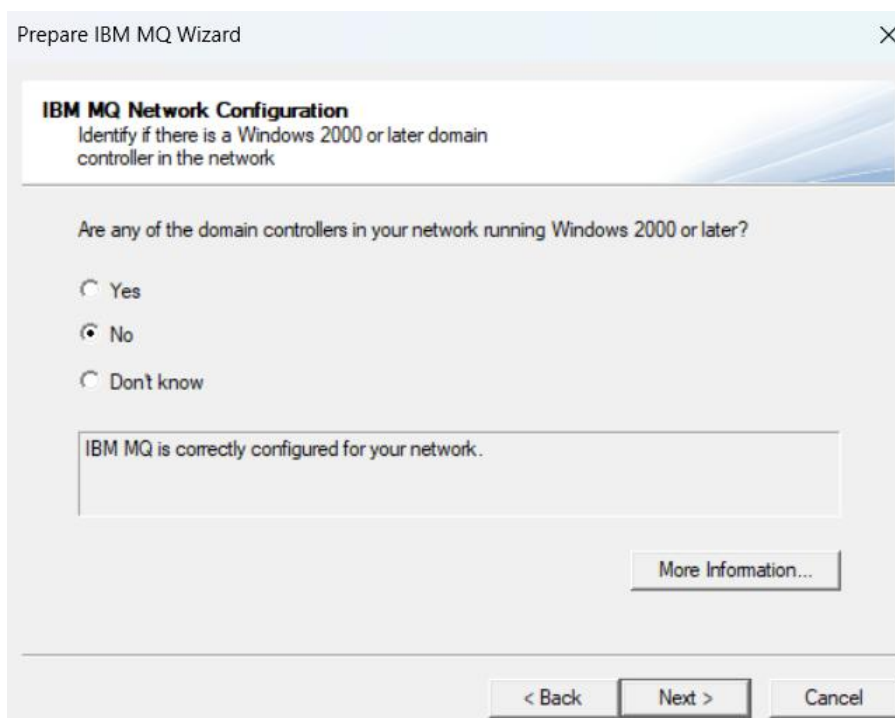
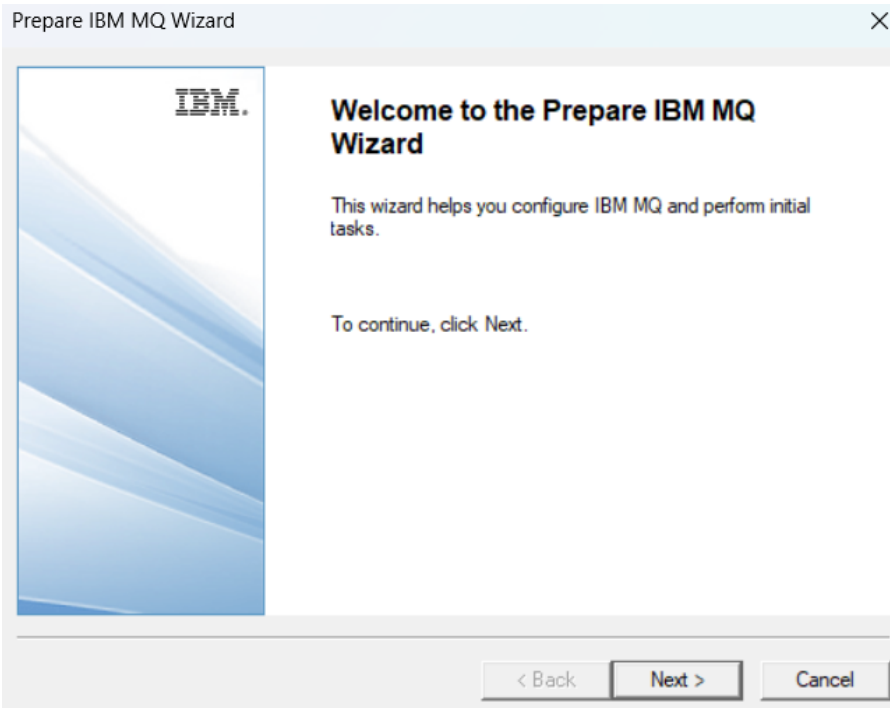
C:\Program Files\IBM\MQ\

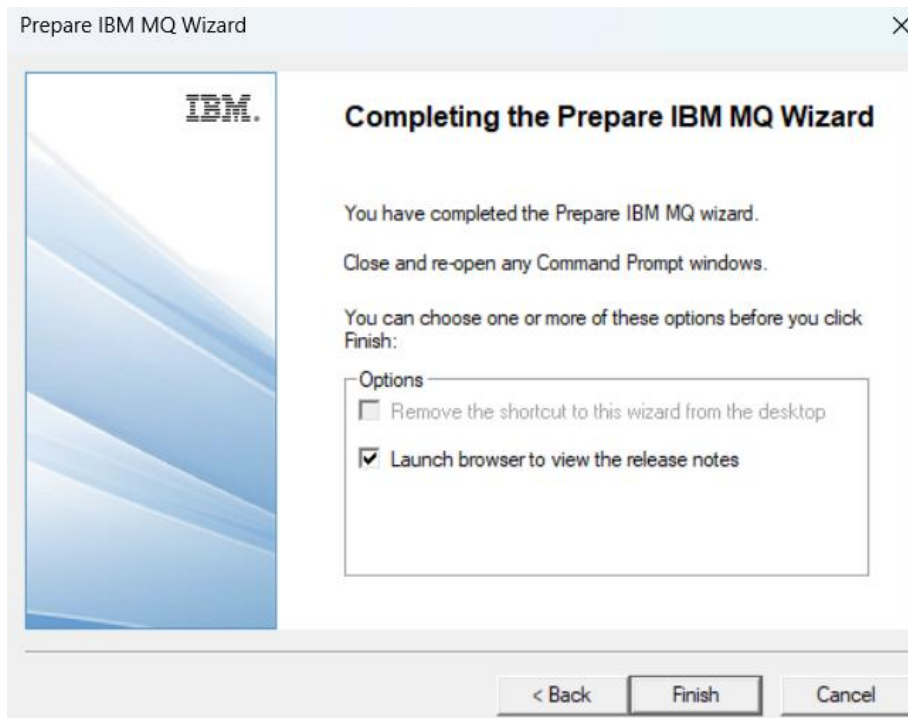
InstallShield

< Back Next > Cancel

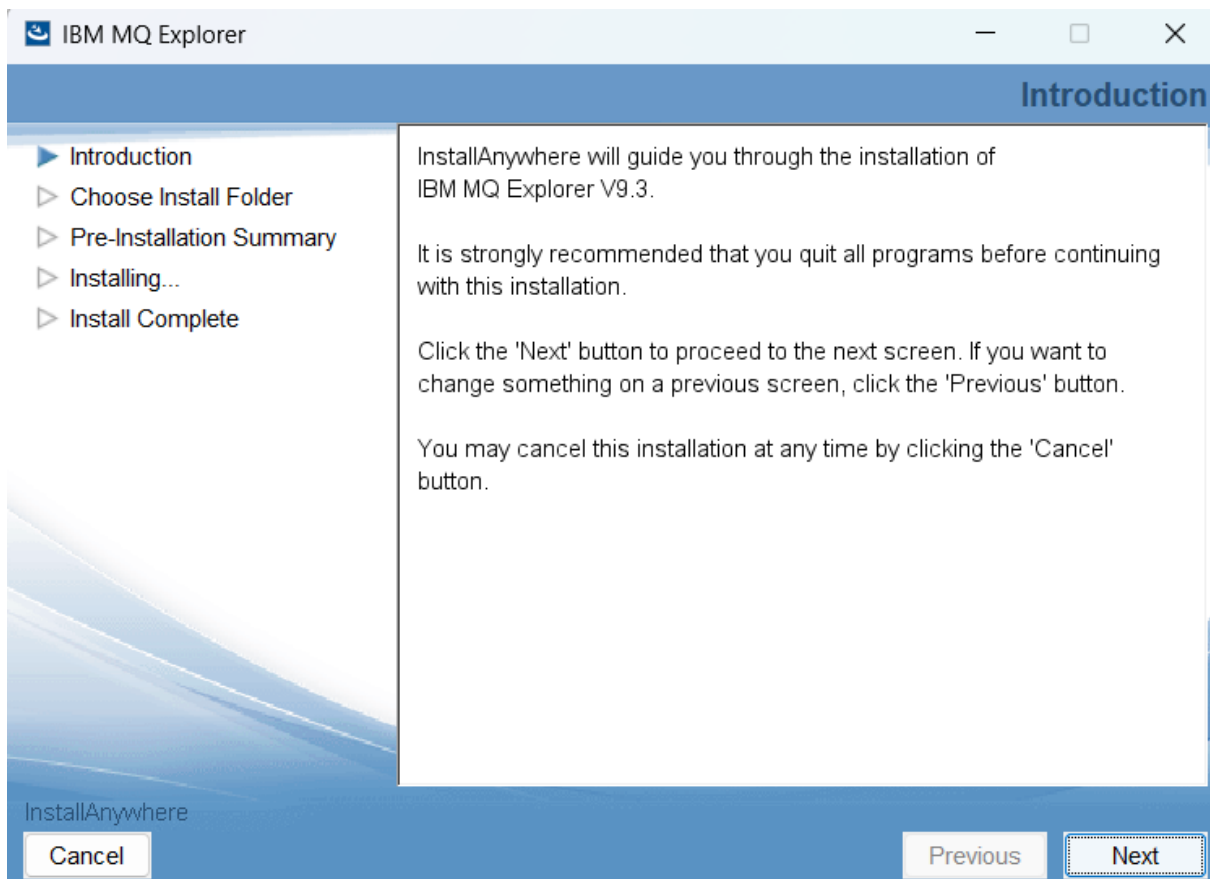


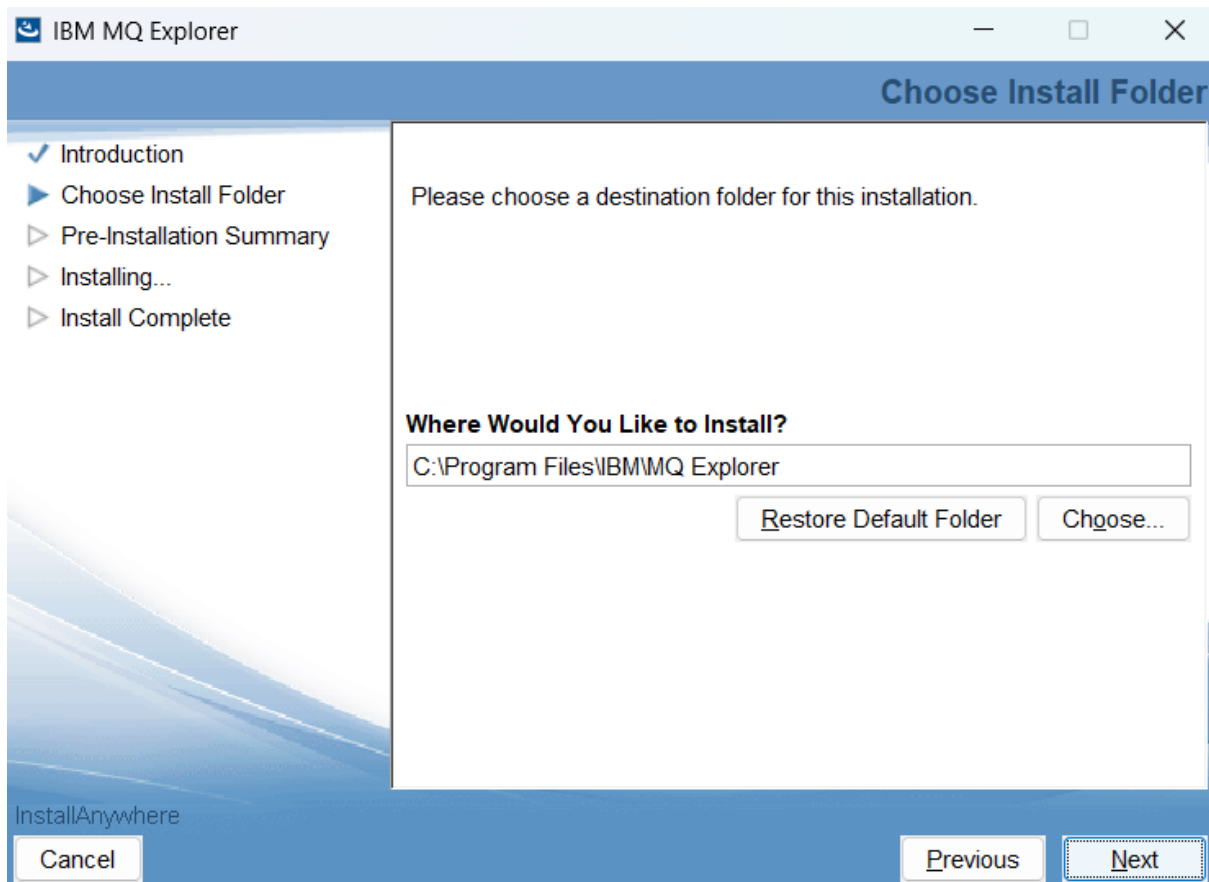
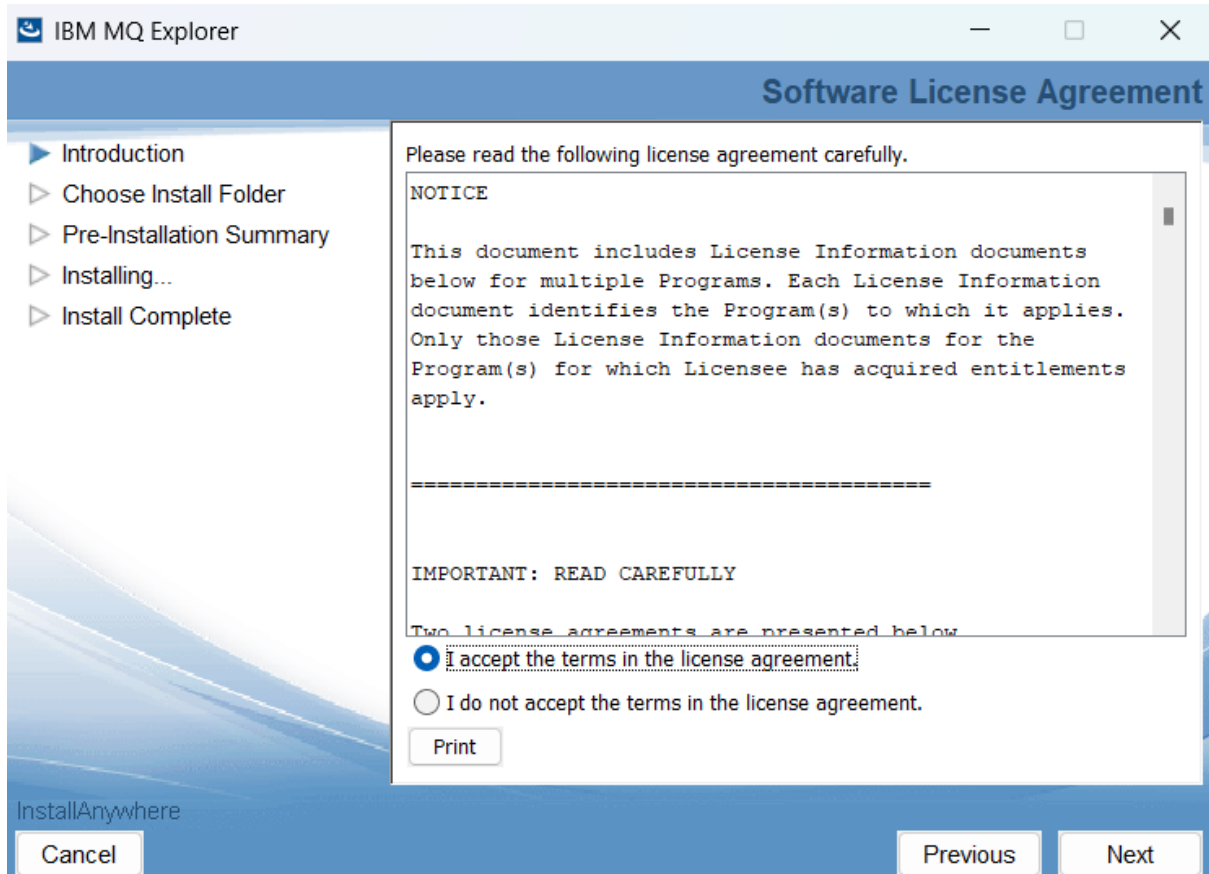


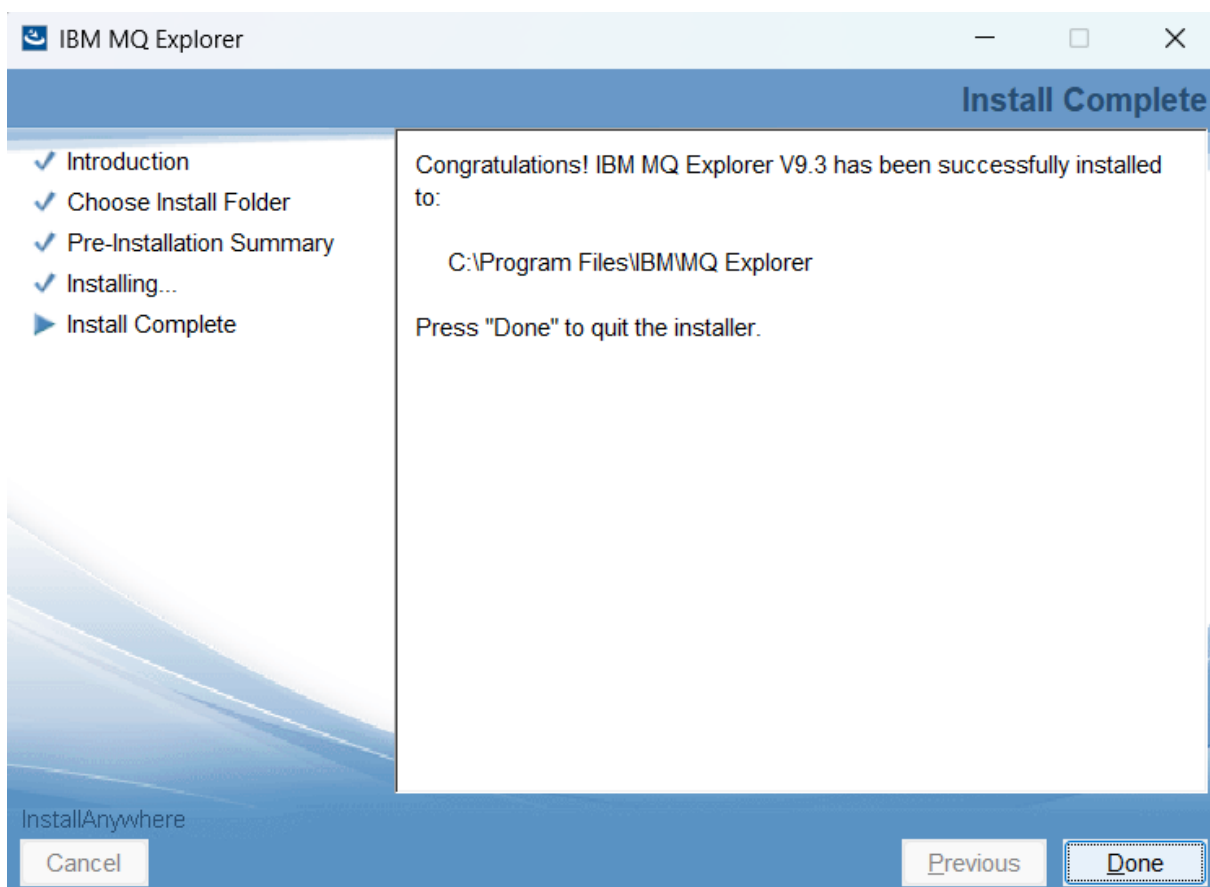
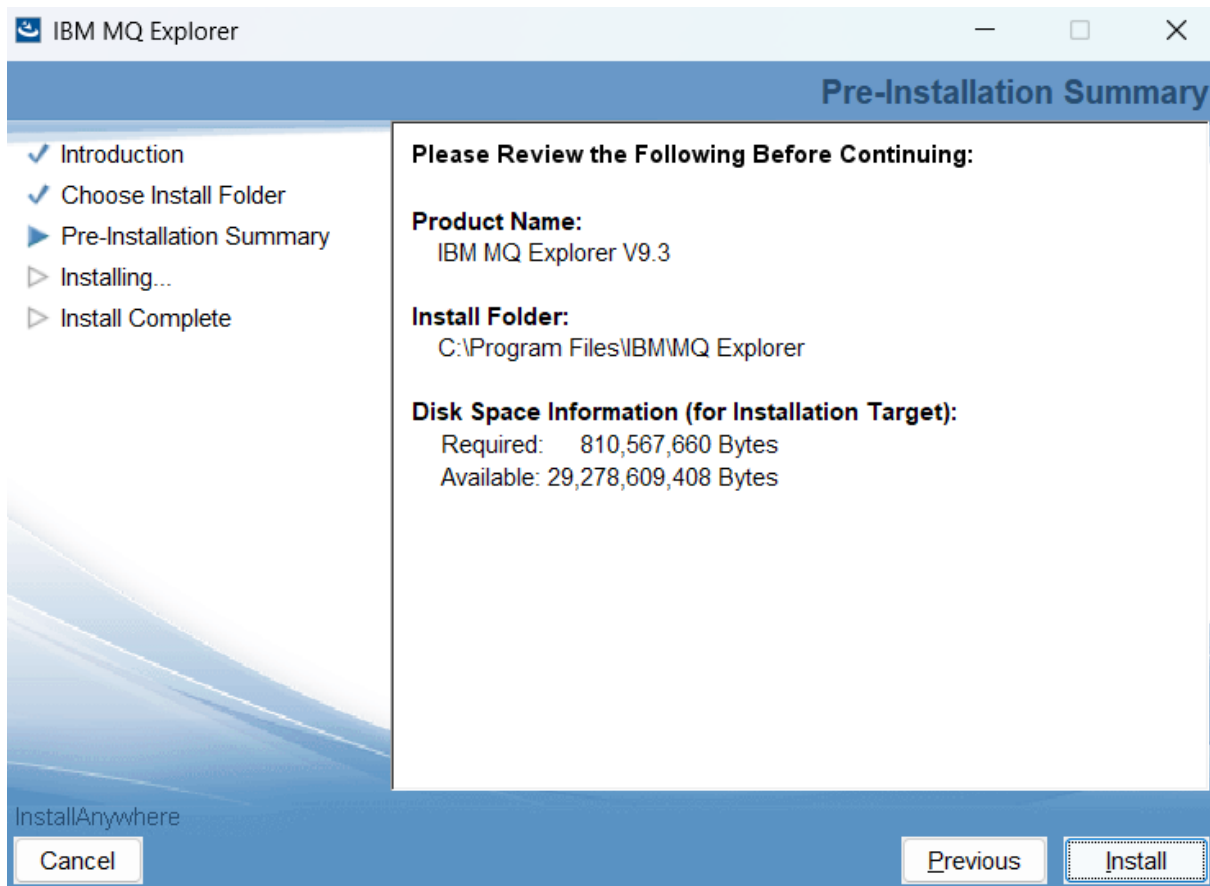




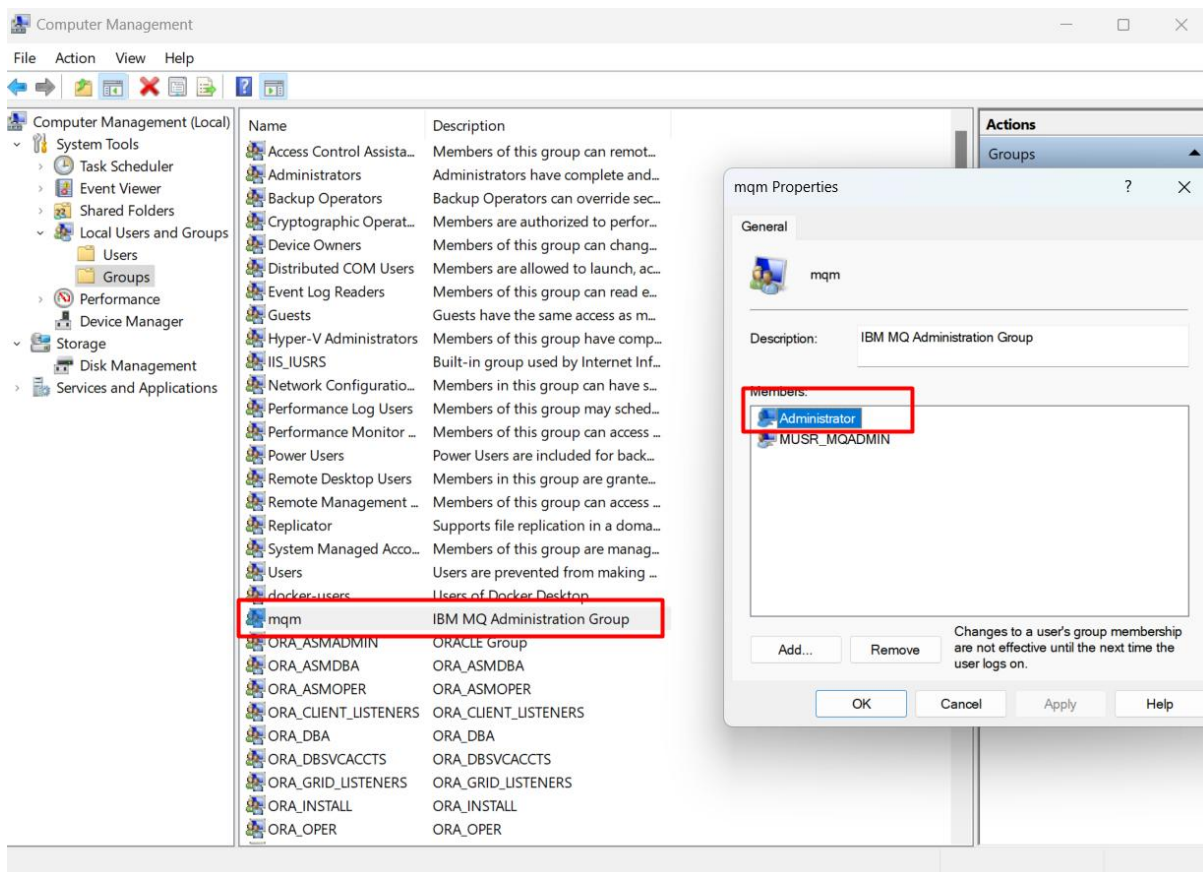
Install MQ Explorer,





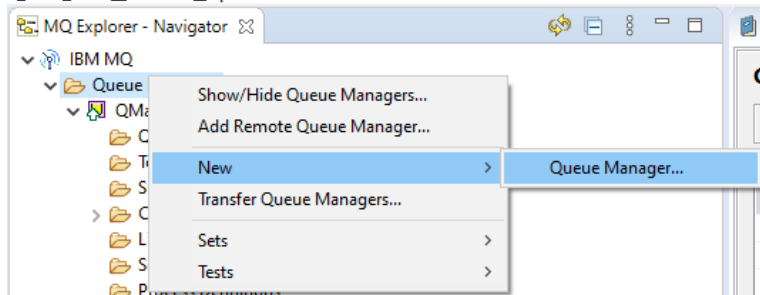


Go to Computer Management -> Add mqm group to "Administrator" user

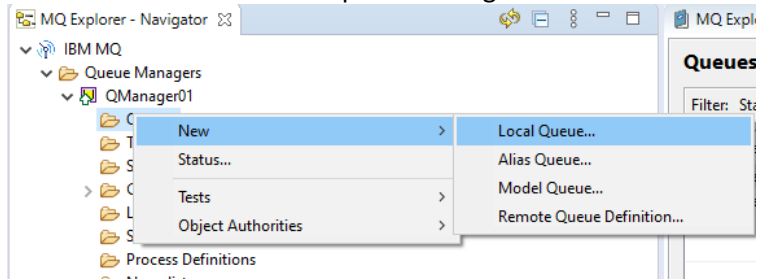


Open MQ Explorer

Create a Queue Manager with default values. QManager01



Create a Queue under that queue manager. Queue1



Run cmd as admin and run following commands:

- Runmqsc <QManager_Name>

- SET CHLAUTH(SYSTEM.DEF.SVRCONN) TYPE(BLOCKUSER) USERLIST(ALLOWANY)
- ALTER CHL(SYSTEM.DEF.SVRCONN) CHLTYPE(SVRCONN) MCAUSER('Administrator')
- ALTER AUTHINFO(SYSTEM.DEFAULT.AUTHINFO.IDPWOS) AUTHTYPE(IDPWOS) CHCKCLNT(OPTIONAL)
- REFRESH SECURITY TYPE(CONNAUTH)

Restart mq service

If you used a different user than change the Administrator to that username.

```
Administrator: Command Prompt - runmqsc QManager01
Microsoft Windows [Version 10.0.22621.3155]
(c) Microsoft Corporation. All rights reserved.

C:\Windows\System32>runmqsc QManager01
5724-H72 (C) Copyright IBM Corp. 1994, 2022.
Starting MQSC for queue manager QManager01.

SET CHLAUTH(SYSTEM.DEF.SVRCONN) TYPE(BLOCKUSER) USERLIST(ALLOWANY)
  1 : SET CHLAUTH(SYSTEM.DEF.SVRCONN) TYPE(BLOCKUSER) USERLIST(ALLOWANY)
AMQ8877I: IBM MQ channel authentication record set.
ALTER CHL(SYSTEM.DEF.SVRCONN) CHLTYPE(SVRCONN) MCAUSER('Administrator')
  2 : ALTER CHL(SYSTEM.DEF.SVRCONN) CHLTYPE(SVRCONN) MCAUSER('Administrator')
AMQ8016I: IBM MQ channel changed.
ALTER AUTHINFO(SYSTEM.DEFAULT.AUTHINFO.IDPWOS) AUTHTYPE(IDPWOS) CHCKCLNT(OPTIONAL)
  3 : ALTER AUTHINFO(SYSTEM.DEFAULT.AUTHINFO.IDPWOS) AUTHTYPE(IDPWOS) CHCKCLNT(OPTIONAL)
AMQ8567I: IBM MQ authentication information changed.
REFRESH SECURITY TYPE(CONNAUTH)
  4 : REFRESH SECURITY TYPE(CONNAUTH)
AMQ8560I: IBM MQ security cache refreshed.
```

