

The image shows two overlapping windows from a Windows operating system. The background window is the Local Group Policy Editor, and the foreground window is the Windows Security application.

**Local Group Policy Editor (Background Window):**

- Title Bar:** Local Group Policy Editor
- Menu:** File, Action, View, Help
- Left Pane (Tree View):**
  - Windows Ink Workspace
  - Windows Installer
  - Windows Logon Options
  - Windows Media Digital Rights M...
  - Windows Media Player
  - Windows Messenger
  - Windows Mobility Center
  - Windows PowerShell
  - Windows Reliability Analysis
  - Windows Remote Management (R...
  - Windows Remote Shell
  - Windows Security
    - Account protection
    - App and browser protection
    - Device performance and health
    - Device security
    - Enterprise Customization
    - Family options
    - Firewall and network protecti...
    - Notifications
    - Systray
    - Virus and threat protection
- Right Pane (Notifications):**

Select an item to view its description.

| Setting                         | State          | Comment |
|---------------------------------|----------------|---------|
| Hide non-critical notifications | Not configured | No      |
| Hide all notifications          | Not configured | No      |
- Bottom Pane (Registry):**

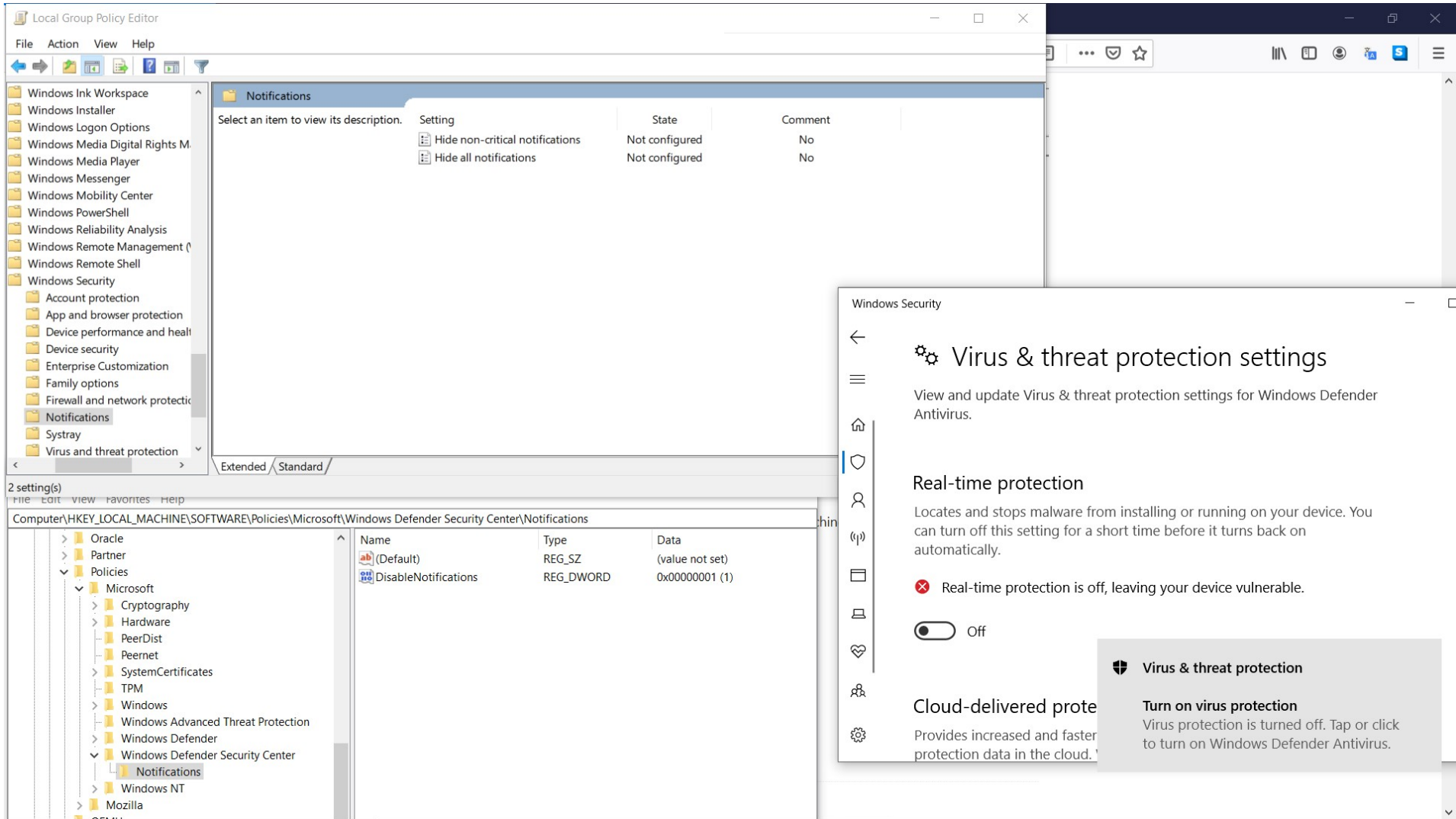
2 setting(s)

Computer\HKEY\_LOCAL\_MACHINE\SOFTWARE\Policies\Microsoft\Windows Defender Security Center\Notifications

| Name                 | Type      | Data            |
|----------------------|-----------|-----------------|
| (Default)            | REG_SZ    | (value not set) |
| DisableNotifications | REG_DWORD | 0x00000001 (1)  |

**Windows Security (Foreground Window):**

- Title Bar:** Windows Security
- Section:** Virus & threat protection settings
- Description:** View and update Virus & threat protection settings for Windows Defender Antivirus.
- Real-time protection:**
  - Description: Locates and stops malware from installing or running on your device. You can turn off this setting for a short time before it turns back on automatically.
  - Toggle:  On
- Cloud-delivered protection:**
  - Description: Provides increased and faster protection with access to the latest protection data in the cloud. Works best with Automatic sample submission turned on.



## Virus & threat protection settings

View and update Virus & threat protection settings for Windows Defender Antivirus.

### Real-time protection

Locates and stops malware from installing or running on your device. You can turn off this setting for a short time before it turns back on automatically.

**Real-time protection is off, leaving your device vulnerable.**

Off

### Virus & threat protection

#### Turn on virus protection

Virus protection is turned off. Tap or click to turn on Windows Defender Antivirus.